

Index File No. C-9

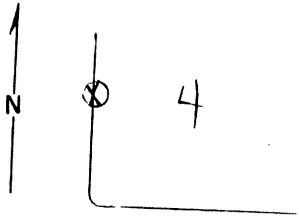
CORNER RECORD (SEARCH)

Tract or Survey No. _____ Cor. No. _____

T 55 R. 37E R.D. _____ County _____

Merid. _____ N.F. _____ State _____

CORNER DIAGRAM



DESCRIBE CORNER MONUMENT FOUND

Basalt Stone 5 x 9 x 15 10" above ground.
good condition 1/4 markings

DESCRIBE BEARING TREES OR OTHER OFFICIAL ACCESSORIES FOUND

20" D.F., living, but in poor condition w/ large sec. 5
18" W.F. living, but in poor condition w/ section
found in sec 4

DESCRIBE CORNER LOCATION RELATIVE TO NEAR-BY FEATURES, ALSO HOW TO REACH CORNER

Located about 30' North from top of
ridge.

PHOTO IDENTIFICATION DATA

Photo No. _____
Filed At. _____
Object Ident. _____
Ident. By _____
Signature

PLANE COORDINATE POSITION DATA

State _____ Zone _____
X _____
Y _____
Estab. By _____
Agency

Signature

T. Williams

Title

C.E.T.

Division

Headquarters

Date

9-24-68

7100-52

REV. 65 5

UNION COUNTY SURVEYOR

Date Received _____

Date Filed 12-23-87

By G. LANGLITZ, DEPUTY

File No. 362-87R

C-9

CERTIFIED RECORD OF LAND CORNER MONUMENTATION

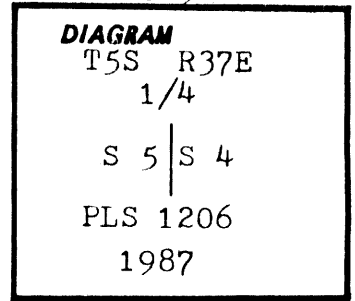
C-9

History of original corner establishment:

William R. Gradon conducted the survey of Township 5 South, Range 37 East, W.M., under GLO contract No. 445, dated June 1, 1882.

Gradon set a basalt stone 15" x 9" x 5" 10" in the ground, with 1/4 on West face, from which:

- A fir 8" dia. bears S 85 E at 25 lks.
- A fir 14" dia. bears N 70 W at 6 lks.



Description of corner evidence found:

A basalt stone 16" x 9" x 6" well set into the ground with 1/4 marked on West face.

BT's-

A 23" dia. White Fir snag bears S 85 E at 16.5 ft. mkd. with healed blaze.

An up-rooted 21" dia. White Fir bears N 70 W at 4.0 ft. mkd. with healed blaze.

Description of monument and accessories established to perpetuate the original location of this corner:

At the original found stones location, set 2 1/2" x 30" aluminum pipe 26" into the ground with 36" dia. stone mound around it. 2 1/2" dia. aluminum cap mkd. as shown in the corner diagram. Buried the original stone 1' North.

From the corner point: (New BT's)

- A 24" dia. White Fir bears S 89 E at 34.4 ft. mkd. 1/4 S4 BT.
- A 8" dia. White Fir bears N 66 W at 12.5 ft. mkd. 1/4 S5 BT.

Attached U.S.F.S. 54-9 and 54-3 signs to the bearing trees, and painted the blaze and a band around the bearing trees red. Attached a 3/4" dia. brass I.D. washer mkd. PLS 1206, between the B and T Scribes. Set a steel fence post 4' North of the monument with U.S.F.S. 54-9 sign attached. Used 18 1/2° declination on a staff compass for readings to the bearing trees, and used a steel tape to measure to a nail set in the side of the bearing trees at the base.

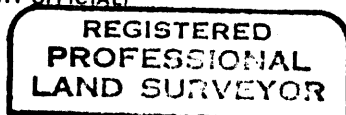
This monument was set to U.S.F.S. specifications on May 17, 1987, witnessed by Tom Fisk and Larry McBroom.

UNION COUNTY SURVEYOR	
Date Received <u>5-1-89</u>	
Date Filed <u>5-15-89</u>	
By <u>G. LANGLITZ DEPUTY</u>	
File No. <u>56-89 R</u>	

Office of County Surveyor..... County of..... Union.....
State of Oregon..... I hereby certify that the within instrument was filed in this office
for record on the..... day of....., 19.....

..... by
(COUNTY OFFICIAL) (DEPUTY)

Form R6-7100-57 (9/71)



James D. Hanley
OREGON
SEPTEMBER 23 1977
JAMES D. HANLEY
1206