

A-13

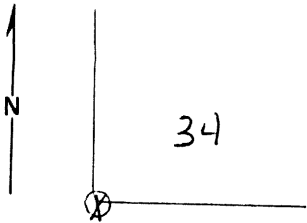
Index
File No. 7-13
T 4S R. 37E
Merid. will

CORNER RECORD (SEARCH)

Tract or
Survey No. _____
Cor.
No. _____

R.D. La Grande County Union
N.F. Willson - Whitman State Oregon

CORNER DIAGRAM



DESCRIBE CORNER MONUMENT FOUND

None

DESCRIBE BEARING TREES OR OTHER OFFICIAL ACCESSORIES FOUND

30" D.F. line, w/ scolding sec. 34
18" D.F. line, blazed sec. 3
30" D.F. line, w/ scolding sec. 4

PHOTO IDENTIFICATION DATA

Photo No. EDW 11-189
Filed At. _____
Object Ident. _____
Ident. By J.W. Pos.
Signature

PLANE COORDINATE POSITION DATA

State _____ Zone _____
X _____
Y _____
Estab. By _____
Agency

DESCRIBE CORNER LOCATION RELATIVE TO NEAR-BY FEATURES, ALSO HOW TO REACH CORNER

Signature

Title

Division

Headquarters

Date

7100-52
REV. 65 5

J. Williams

C.E.T.

6-9-68

**UNION COUNTY
SURVEYOR**

Date Received _____

Date Filed 12-23-87

By G. LANGLITZ, DEPUTY

File No. 338-87R

A-13

CERTIFIED RECORD OF LAND CORNER MONUMENTATION

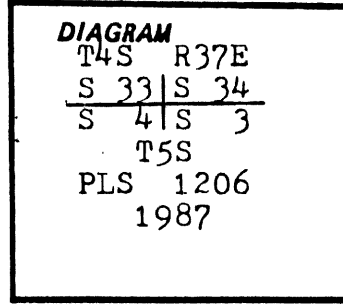
A-13

History of original corner establishment:

J. C. Cooper conducted the survey of the First Standard Parallel, Township 5 South, Ranges 34, 35, 36, and 37 East, W.M., together with additional Township and Range lines, under GLO contract No. 397 dated July 14, 1881.

Cooper set a post for the corner point, from which:

- A fir 30" dia. bears N 30 E at 23 lks. dist.
- A fir 7" dia. bears S 18 E at 51 lks. dist.



Herman D. Graden conducted the survey of the subdivision of Township 4 South, Range 37 East, W.M., under GLO contract No. 452, dated June 16, 1882. He marked two additional bearing trees:

- A fir 30" dia. bears S 5 W at 180 lks. dist.
- A fir 6" dia. bears N 10 W at 108 lks. dist.

Description of corner evidence found:

BT s-

- A dead and standing 40" dia. Douglas Fir bears S 9 W 122.6 ft. mkd. T5S on partially healed blaze.
- A live 31" dia. Douglas Fir bears N 30 E 14.9 ft. mkd. with healed blaze.
- A live 18" dia. Douglas Fir bears S 23 E 23.7 ft. mkd. with healed blaze.

Description of monument and accessories established to perpetuate the original location of this corner:

The corner point re-established from the found original bearing trees. The three original bearing trees do not perfectly match with each other. At the corner point, set 2 1/2" x 30" aluminum pipe 24" into the ground, with 36" dia. stone mound around it. 2 1/2" dia. aluminum cap mkd. as shown in the corner diagram.

From the corner point: (New BT's)

- A 12" dia. Douglas Fir bears N 21° W at 23.3 ft. dist., mkd. T4S R37E S 33 BT.
- A 17" dia. Douglas Fir bears S 12 1/2° W at 110.3 ft. dist., mkd. T5S R37E S 4 BT

Attached U.S.F.S. 54-9 and 54-3 signs to the bearing trees, and painted the blaze and a 6" band around the bearing trees red. Attached a 3/4" dia. brass I.D. washer mkd. PLS 1206, between the B and T scribes. Set a steel fence post 4' East with U.S.F.S. 54-9 sign attached to it. Used 18 1/2° declination on a staff compass for readings to the bearing trees and used a steel tape to measure to a nail set in the side of the bearing trees at the base.

This corner was monumented to U.S.F.S. specifications on July, 1987, witnessed by Larry McBroom and Tim Rouse.

UNION COUNTY SURVEYOR	
Date Received <u>5-1-89</u>	
Date Filed <u>5-15-89</u>	
By <u>G. LANGLITZ DEPUTY</u>	
File No. <u>49-89R</u>	

Office of..... County Surveyor..... County of..... Union
Oregon....., I hereby certify that the within instrument was filed in this office
for record on the..... day of....., 19.....

..... by
(COUNTY OFFICIAL)

.....
(DEPUTY)

Form R6-7100-57 (9/71)

**REGISTERED
PROFESSIONAL
LAND SURVEYOR**

James D. Hanley
OREGON
SEPTEMBER 21, 1977
JAMES D. HANLEY
1206