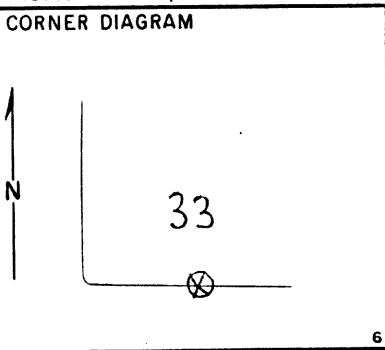


Index File No. 2H A-11 CORNER RECORD (SEARCH) Tract or Survey No. _____ Cor. No. _____
 T 45 R. 37E R.D. La Grande County Union
 Merid. will N.F. Wetmore-Winters State Oregon



DESCRIBE CORNER MONUMENT FOUND

DESCRIBE BEARING TREES OR OTHER OFFICIAL ACCESSORIES FOUND

18" D.F. w/ scintling in sec 33
 20" D.F. blazed in sec 33

PHOTO IDENTIFICATION DATA

Photo No. ENOW-11-189
 Filed At. _____
 Object Ident. _____
 Ident. By dw pos
Signature

DESCRIBE CORNER LOCATION RELATIVE TO NEAR-BY FEATURES, ALSO HOW TO REACH CORNER

PLANE COORDINATE POSITION DATA

State _____ Zone _____
 X _____
 Y _____
 Estab. By _____
Agency

Signature _____ Title _____ Division _____ Headquarters _____ Date _____

7100-52
 REV. 65 5

UNION COUNTY SURVEYOR

Date Received _____
 Date Filed 12-23-87
 By G. LANGLITZ, DEPUTY
 File No. 337-87R

A-11

CERTIFIED RECORD OF LAND CORNER MONUMENTATION

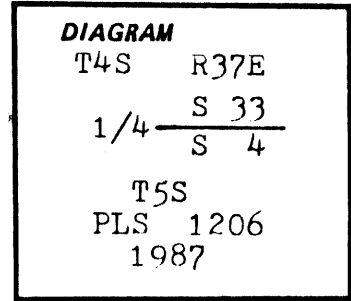
History of original corner establishment:

J. C. Cooper conducted the survey of the First Standard Parallel, Township 5 South, Ranges 34, 35, 36, and 37 East, W.M., together with additional Township and Range lines, under GLO contract No. 397 dated July 14, 1881.

Cooper set a post for the corner point, from which:

- A fir 10" dia. bears N 8 E at 15 lks. dist.
- A fir 16" dia. bears S 62 E at 14 lks. dist.

A-11



Description of corner evidence found:

BT's-

A 10" dia. Douglas Fir bears N 8 E at 14.5 ft. dist., mkd. with visible, but not legible scribing. Tree is living and healthy.

A 23" dia. Douglas Fir bears S 62 E at 11.3 ft. dist. mkd. with healed blaze. Tree is living and healthy.

Description of monument and accessories established to perpetuate the original location of this corner:

Corner point re-established from the bearings of the two original found bearing trees. Bearings were used to re-establish the original corner point, because of the directions which the blazes were facing.

At the corner point, set 2 1/2" x 30" dia. aluminum pipe 24" into the ground, with 36" dia. stone mound around it. 2 1/2" dia. aluminum cap mkd. as shown in the corner diagram.

Attached U.S.F.S. 54-9 and 54-3 signs to the bearing trees, and painted the blaze and a 6" band around the bearing trees red. Set a steel fence post 4' Northeast of the monument with U.S.F.S. 54-9 sign attached to it. Used 18 1/2° declination on a staff compass for readings to the bearing trees, and used a steel tape to measure to the center of the bearing trees at the base.

This corner was monumented to U.S.F.S. specifications on July, 1987, witnessed by Larry McBroom and Tim Rouse.

UNION COUNTY SURVEYOR	
Date Received <u>5-1-89</u>	
Date Filed <u>5-15-89</u>	
By <u>G. LANGLITZ DEPUTY</u>	
File No. <u>48-89R</u>	

Office of...County Surveyor..... County of...Union.....
State of...Oregon....., I hereby certify that the within instrument was filed in this office
for record on the..... day of....., 19.....

..... by
(COUNTY OFFICIAL) (DEPUTY)

Form R6-7100-57 (9/71)

**REGISTERED
PROFESSIONAL
LAND SURVEYOR**

James D. Hanley

OREGON
SEPTEMBER 23, 1977
JAMES D. HANLEY
1206