

Index File No. ~~2-9~~ A-9

CORNER RECORD (SEARCH)

Tract or Survey No. \_\_\_\_\_ Cor. No. \_\_\_\_\_

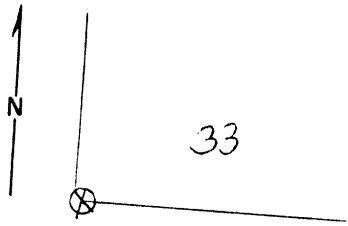
T 45 R. 37E

R.D. La Grande County Union

Merid. Wise

N.F. Whitman-Whitman State Oregon

CORNER DIAGRAM



DESCRIBE CORNER MONUMENT FOUND

DESCRIBE BEARING TREES OR OTHER OFFICIAL ACCESSORIES FOUND

28" E.S. peeling in sec 33

PHOTO IDENTIFICATION DATA

Photo No. ENW 12-55

Filed At. \_\_\_\_\_

Object Ident. \_\_\_\_\_

Ident. By \_\_\_\_\_

Signature

PLANE COORDINATE POSITION DATA

State \_\_\_\_\_ Zone \_\_\_\_\_

X \_\_\_\_\_

Y \_\_\_\_\_

Estab. By \_\_\_\_\_

Agency

Signature

Title

Division

Headquarters

Date

T. Williams

C.E.T.

6-27-68

7100-52  
REV. 65 5

UNION COUNTY SURVEYOR

Date Received \_\_\_\_\_

Date Filed 12-23-87

By G. LANGUITZ, DEPUTY

File No. 336-87R

~~2-9~~  
A-9

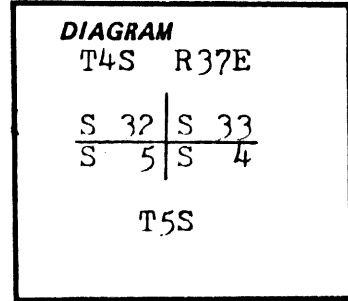
CERTIFIED RECORD OF LAND CORNER MONUMENTATION

A-9

**History of original corner establishment:**

J. C. Cooper conducted the survey of the First Standard Parallel, Township 5 South, Ranges 34, 35, 36, and 37 East, W.M., together with additional Township and Range lines, under GLO contract No. 397 dated July 14, 1881.

Cooper set a post for the corner point, from which:  
 A Pine 14" dia. bears N 5° E at 58 lks. dist.  
 A Spruce 13" dia. bears S 40° E at 74 lks. dist.



Herman D. Gradon conducted the subdivision survey of Township 4 South, Range 37 East, W.M., under GLO contract No. 452, dated June 16, 1882. He marked additional bearing trees:

An Alder 5" dia. bears S 72° W at 98 lks. dist.  
 An Alder 6" dia. bears N 60° W at 63 lks. dist.

**Description of corner evidence found:**

BT's-  
 A 30" Spruce bears S 40° E at 48.8 ft. mkd. 3 S4, on partially healed blaze.

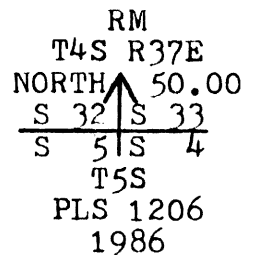
<b>UNION COUNTY SURVEYOR</b>	
Date Received	<u>5-1-89</u>
Date Filed	<u>5-15-89</u>
By	<u>G. LANGLITZ, DEPUTY</u>
File No.	<u>47-89 R</u>

**Description of monument and accessories | established to perpetuate the**

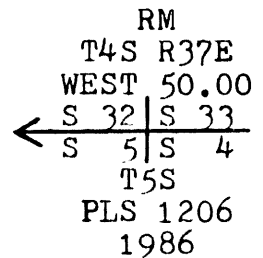
**original location of this corner:** The corner point is located in the present Jordan Creek channel, nothing is set at the corner point.

From the corner point: (Reference monuments)  
 Set 2 1/2" x 30" aluminum pipe, with 2 1/2" aluminum cap South 50.00 ft. with cap mkd. as shown at right.

Set 2 1/2" x 30" aluminum pipe, with 2 1/2" aluminum cap East 50.00 ft. with cap mkd. as shown at lower right.



New BT's-  
 A 17" dia. Spruce bears S 36° W at 88.4 ft. dist., mkd. T5S R37E S5 BT.  
 A 10" dia. Spruce bears N 17° E at 45.0 ft. dist., mkd. T4S R37E S33 BT.  
 A 12" dia. Spruce bears N 26° W at 90.5 ft. dist., mkd. T4S R37E S32 BT.



Attached U.S.F.S. 54-9 and 54-3 signs to the bearing trees and painted the blaze and a band around the bearing trees red. Attached a 3/4" dia. brass I.D. washer mkd. PLS 1206, between the B and T scribes. Set a steel fence post 4' from each of the two reference monuments, with a U.S.F.S. 54-9 sign attached to each. Constructed 36" dia. stone mound around each reference monument. Used 18 1/2° declination on a staff compass for readings to the reference monuments and the bearing trees, and used a steel tape to measure to the reference monuments and to a nail set in the side of the bearing trees at the base. This corner was monumented to U.S.F.S. specifications November 6, 1986, witnessed by Tom Fisk and Larry McBroom.

Office of... County Surveyor..... County of..... Union  
 State of..... Oregon....., I hereby certify that the within instrument was filed in this office for record on the..... day of....., 19.....

..... by ..... (COUNTY OFFICIAL) (DEPUTY)

**REGISTERED PROFESSIONAL LAND SURVEYOR**

OREGON  
 SEPTEMBER 21, 1977  
 JAMES D. HANLEY  
 1206