

Index File No. 25 A-5

CORNER RECORD (SEARCH)
(Ref. FSM 7151.4)

Tract or Survey No. _____ Cor. No. SEC

T 45 R. 37E

R.D. LA GRANDE

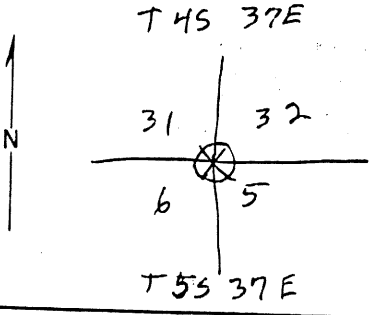
County UNION

Merid. WILL.

N.F. W-W

State ORE

CORNER DIAGRAM



DESCRIBE CORNER MONUMENT FOUND

DESCRIBE BEARING TREES OR OTHER OFFICIAL ACCESSORIES FOUND

Photo ENW 12-14 on file at NFH 45 37E file shows pinpricked BT

No name no date except sometime prior to 1975

DESCRIBE CORNER LOCATION RELATIVE TO NEAR-BY FEATURES, ALSO HOW TO REACH CORNER

PHOTO IDENTIFICATION DATA

Photo No. _____
Filed At. _____
Object Ident. _____
Ident. By _____
Signature

PLANE COORDINATE POSITION DATA

State _____ Zone _____
X _____
Y _____
Estab. By _____

Agency Signature

Title _____ Division _____ Headquarters _____ Date _____

UNION COUNTY SURVEYOR

Date Received _____

Date Filed 12-23-87

By G. LANSLITZ, Deputy

File No. 335-87A

A-5

CERTIFIED RECORD OF LAND CORNER MONUMENTATION

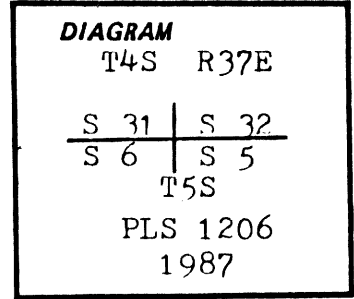
A-5

History of original corner establishment:

J. C. Cooper conducted the survey of the First Standard Parallel, Township 5 South, Ranges 34, 35, 36, and 37 East, W.M., together with additional Township and Range lines, under GLO contract No. 397 dated July 14, 1881.

Cooper set a post for the corner point, from which:

- A pine 10" dia. bears S 30 W at 31 lks. dist.
- A fir 10" dia. bears S 55 E at 40 lks. dist.



Herman D. Gradon conducted the survey of the subdivision of Township 4 South, Range 37 East under GLO contract No. 452 dated June 16, 1882. He marked two additional bearing trees:

- A pine 6" dia. bears N 75 E at 90 lks. dist.
- A tamarack 6" dia. bears N 70 W at 111 lks. dist.

Description of corner evidence found:

BT's-

- A live 38" dia. Douglas Fir bears S 55 E at 26.4 ft. dist., the blaze has been cut into, and "R 3" is visible.
- A live 21" dia. Western Larch bears N 70 W at 70.0 ft. dist., mkd. with healed blaze.

Description of monument and accessories established to perpetuate the original location of this corner:

Corner point re-established from the two original found bearing trees. At the corner point, set 2 1/2" x 30" aluminum pipe 26" into the ground, with 36" dia. stone mound around it. 2 1/2" dia. aluminum cap mkd. as shown in the corner diagram.

From the corner point: (New BT's)

- A 7" dia. Douglas Fir bears N 67 E at 44.0 ft. dist. mkd. T4S R37E S32 BT.
- A 9" dia. Spruce bears S 37 W at 32.6 ft. dist. mkd. T5S R37E S6 BT.

Attached U.S.F.S. 54-9 and 54-3 signs to the bearing trees, and painted the blaze and a 6" band around the bearing trees red. Attached a 3/4" dia. brass I.D. washer mkd. PLS 1206, between the B and T scribes. Set a steel fence post 4' West with U.S.F.S. 54-9 sign attached to it. Used 18 1/2° declination on a staff compass for readings to the bearing trees and used a steel tape to measure to a nail set in the side of the bearing trees at the base.

This corner was monumented to U.S.F.S. specifications on May, 1987, witnessed by Tom Fisk, Larry McBroom and Andy Marlette.

UNION COUNTY SURVEYOR	
Date Received	<u>5-1-89</u>
Date Filed	<u>5-15-89</u>
By	<u>G. LANGLITZ, DEPUTY</u>
File No.	<u>45-89R</u>

Office of..... County Surveyor..... County of..... Union
 Oregon
 State of....., I hereby certify that the within instrument was filed in this office
 for record on the..... day of....., 19.....
 by
 (COUNTY OFFICIAL) (DEPUTY)

Form R6-7100-57 (9/71)

