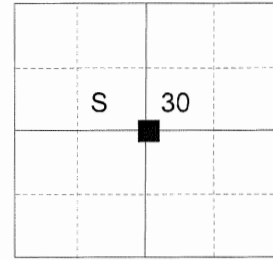


CERTIFIED RECORD OF LAND CORNER MONUMENTATION

HISTORY OF ORIGINAL CORNER ESTABLISHED:

Corner not previously established.

T 4 S R 41 E T-03



DESCRIPTION OF CORNER EVIDENCE FOUND:

None.

SEE SURVEY NUMBER 035-2017

DESCRIPTION OF MONUMENT AND ACCESSORIES I ESTABLISHED

TO PERPETUATE THE ORIGINAL LOCATION OF THIS CORNER:

At position determined by survey, I set a 2 1/2" aluminum pipe with 2 1/2" aluminum cap, marked as shown below, 25 inches in the ground, in a collar of stone 2 ft. diam., from which:

NEW BEARING OBJECTS:

A rock outcrop, approx. 15'x6'x3' bears North 61° East, a distance of 14.60 feet, marked "X BO" on an upright face on the South side of the outcrop.

A rock outcrop, approx 12'x3'x2' bears South 71° East, a distance of 36.75 feet, marked "X BT" on the West face.

An 11" Ponderosa Pine bears South 26° West, a distance of 65.65 feet, marked C 1/4 S30 BT.

A 9" Ponderosa Pine bears North 86° West, a distance of 25.25 feet, marked S C 1/4 S30 BT.

Set a fencepost approx. 2 ft. West of the corner.

I hereby certify that the corner was monumented August 10, 2017.

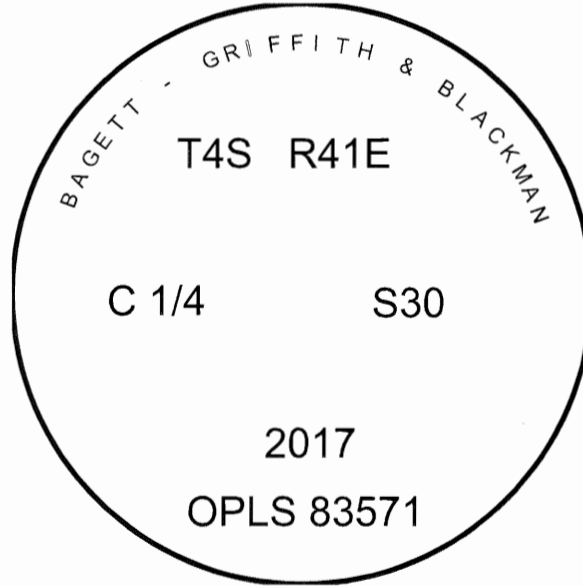
Witness: Kyle Tucker

REGISTERED
PROFESSIONAL
LAND SURVEYOR



OREGON
June 2, 2010
JEFFREY S. HSU
83571

Renewal Date: June 30, 2019



**UNION COUNTY
SURVEYOR**

Date Received 8/10/17

Date Filed 8/18/17

Filed By [Signature]

File Number 036-2017R

I used a steel tape and magnetic compass in the establishment of the bearing trees. Magnetic declination used was 13° East. Bearings are to a brass washer marked OPLS 83571 in the lower blaze of the new trees. Distance is to a spike set in the root crown of the side of the new trees. Bearings and distances to the rock outcrops are to the "X".