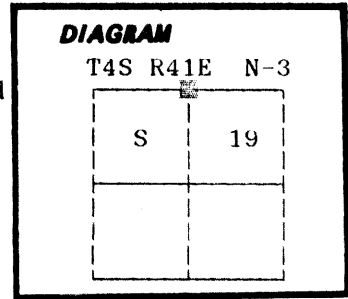


CERTIFIED RECORD OF LAND CORNER MONUMENTATION

History of original corner establishment:

Corner originally established by Henry M. Thatcher under GLO contract number 320, dated April 1, 1879. Surveyor General record states:

Set stone 13x7x7 for 1/4 sec cor
 Raised mound of stone at cor



Corner was found on a survey by J.W. Kimbrell on survey dated July 13, 1888 and recorded as survey number 41 in the old book of Union County surveys. His notes do not identify the corner monument other than "The 1/4 sec corner between sec 18 & 19."

No record of subsequent monumentation found in Union County survey records.

Description of corner evidence found:

Found a ring of stone alongside the Northeast corner of a rockjack. In the rockjack I found a stone 13x7x7 inches marked 1/4.

See Union County survey number 29-88

UNION COUNTY SURVEYOR

Date Received 8-9-88

Date Filed 8-24-88

By G. LANGRISH, Deputy

File No. 94-88R

Description of monument and accessories I established to perpetuate the

original location of this corner: In place of the found ring of stone, I set a 2 1/2" x 30" aluminum pipe with aluminum cap marked as shown, 18 inches in the ground, from which;

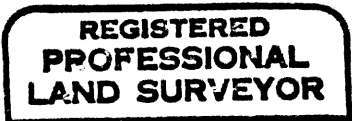
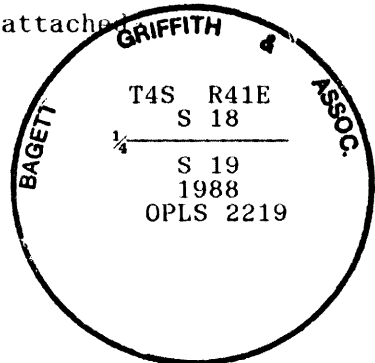
New BTs
 A 14 inch diameter Ponderosa Pine bears N37°E, 41.77 feet marked 1/4 S18 BT
 A 14 inch diameter Ponderosa Pine bears S74°E, 57.89 feet marked 1/4 S19 BT

Buried the original corner stone West and alongside of monument.
 Raised a mound of stone around monument, 3 ft. base to top of cap.

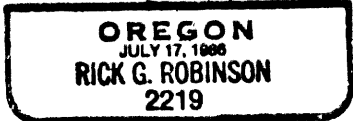
Painted a 6 inch red band around all BTs and attached 54-3 and 54-9 signs.
 Set a steel fencepost approximately 5 feet East with 54-9 sign attached.

I hereby certify that the above corner point was perpetuated as hereon described on July 20, 1988.

Witness: Duane Griffith



Rick G. Robinson



I used a steel tape and magnetic compass in the establishment of new accessories. I used 18° magnetic declination. The distances are to a 50d spike driven in the right side of the root crown. I attached a brass washer marked OPLS 2219 to the BT blaze.

Office of..... County of.....
 State of....., I hereby certify that the within instrument was filed in this office
 for record on the..... day of....., 19.....
 by
 (COUNTY OFFICIAL) (DEPUTY)

CERTIFIED RECORD OF LAND CORNER MONUMENTATION

HISTORY OF ORIGINAL CORNER ESTABLISHED:

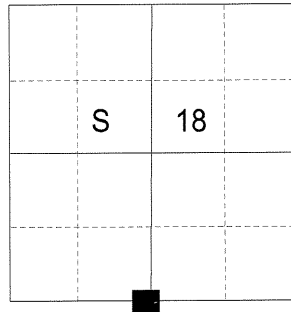
Corner originally established by Henry M. Thatcher under GLO Contract Number 320, dated April 1, 1879. Surveyor General field notes state:
Set Stone 13x7x7 for 1/4 Sec. Cor.
Raised Stone Mound at Cor.

Corner found by J.W. Kimbrell on survey dated July 13, 1888. Filed as survey number 41 in the old book of Union County surveys. His notes do not identify the corner monument other than "The 1/4 sec corner between sec 18 & 19".

In 1988, Rick Robinson brings this monument up to modern standards from original evidence. Union County Monumentation Record states:

In place of found ring of stone, I set a 2 1/2" x 30" aluminum pipe with aluminum cap 18 inches in the ground, from which:
A 14 inch diameter Ponderosa Pine bears N37°E, 41.77 feet marked 1/4 S18 BT
A 14 inch diameter Ponderosa Pine bears S74°E, 57.89 feet marked 1/4 S19 BT

T 4 S R 41 E N-03



DESCRIPTION OF CORNER EVIDENCE FOUND:

Found a 2 1/2" aluminum pipe with a 2 1/2" aluminum cap, marked as shown below, 12" above ground in a mound of stone 3 feet diameter to the top of cap. From which:

A 16" Ponderosa Pine bears North 37° East, a distance of 41.77 feet, alive and vigorous with a healed blaze.
A 17" Ponderosa Pine bears South 74° East, a distance of 57.90 feet, alive and vigorous with a healed blaze.

DESCRIPTION OF MONUMENT AND ACCESSORIES I ESTABLISHED TO PERPETUATE THE ORIGINAL LOCATION OF THIS CORNER:

From the aluminum pipe monument

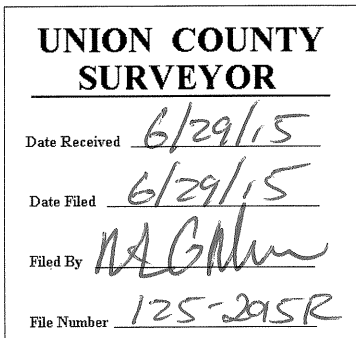
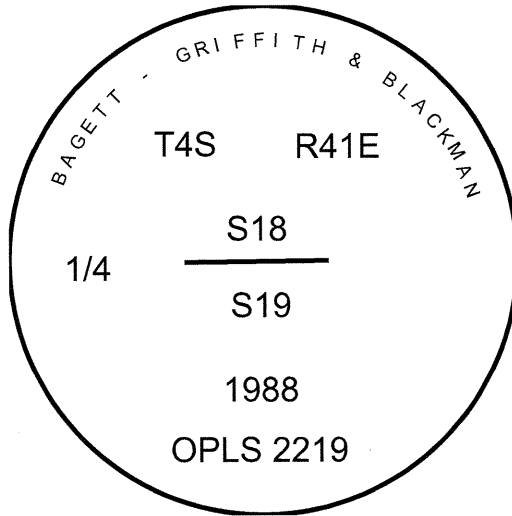
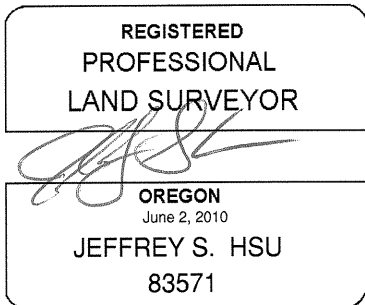
NEW BEARING TREES:

An 11" Ponderosa Pine bears South 44° West, a distance of 116.60 feet, marked 1/4 S19 BT.
A 16" Ponderosa Pine bears North 87° West, a distance of 26.35 feet, marked 1/4 S18 BT.

Found a steel fence post approximately 3 feet East of monument.
Corner falls +/- 4 feet Northeast of a rock jack fence corner.

I hereby certify that this corner was perpetuated on May 15, 2015.

Witness: Thomas J. Kopp



I used a steel tape and magnetic compass in the establishment of the new bearing trees. I used 16° East declination, the distances are to a 60d spike driven into the right side of the root crown of the new bearing tree. A brass washer marked OPLS 83571 is attached to the BT blaze of the new bearing trees.