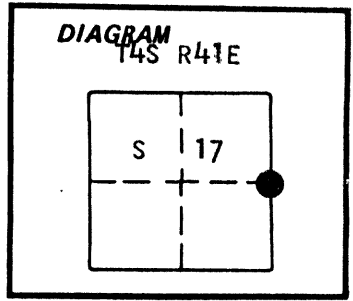


CERTIFIED RECORD OF LAND CORNER MONUMENTATION

History of original corner establishment:
Corner originally established by Henry M. Thatcher under GLO contract number 320 dated April 1, 1879. Surveyor General record states: Set stone 17"x11"x7" for 1/4 section corner and raised mound of stone.



No subsequent record of remonumentation found in county records.

Description of corner evidence found:

Found a stone 17"x11"x7" marked 1/4 S firmly set in a mound of stone.

| UNION COUNTY SURVEYOR | |
|-----------------------|----------------------------|
| Date Received | <u>7-28-86</u> |
| Date Filed | <u>8-19-86</u> |
| By | <u>G. LANGRITZ, DEPUTY</u> |
| File No. | <u>108-86 R</u> |

Description of monument and accessories I established to perpetuate the original location of this corner:

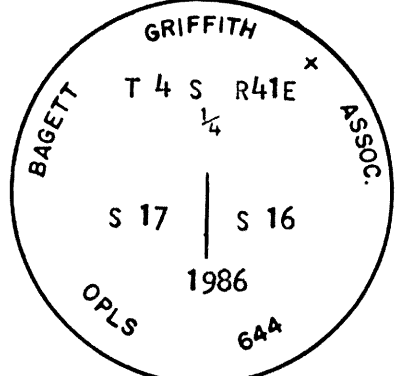
At stone position, I set a 2 1/2"x30" aluminum pipe with aluminum cap marked as shown, 28" in the ground and raised a small mound of stone; From which;

A 22" Douglas Fir bears East 3.68 feet, marked 1/4 S 16 BT.

A 17" White Fir bears S 55° W, 3.75 feet, marked 1/4 S 17 BT.
Set a steel fence post approximately 5 feet North with a 54-9 sign attached.
Corner set 7/17/86

Witness: Rick Robinson

Buried stone North of cap.



Brass washer marked OPLS 644 nailed to BT blaze. Used steel tape and magnetic compass with 20° East declination. Distances to the BTs are to a 50d spike set in right side of tree when facing tree, unless otherwise stated.

Office of..... County of.....
State of....., I hereby certify that the within instrument was filed in this office for record on the..... day of....., 19.....

..... by
(COUNTY OFFICIAL) (DEPUTY)

CERTIFIED RECORD OF LAND CORNER MONUMENTATION

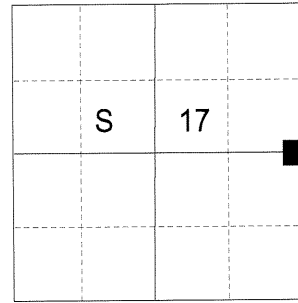
HISTORY OF ORIGINAL CORNER ESTABLISHED:

Corner originally established by Henry M. Thatcher under GLO Contract Number 320, dated April 1, 1879. Surveyor General field notes state:
Set Stone 17x11x7 for 1/4 Sec. Cor.
Raised Stone Mound at Cor.

In 1986, Duane Griffith brings this monument up to modern standards from found original evidence. Union County Monumentation Record states:

At stone position, I set a 2 1/2"x30" aluminum pipe with aluminum cap 28" in the ground and raised a small mound of stone; From which;
A 22" Douglas Fir bears East 3.68 feet, marked 1/4S 16 BT.
A 17" White Fir bears S 55° W, 3.75 feet, marked 1/4 S 17 BT.

T 4 S R 41 E L-09



DESCRIPTION OF CORNER EVIDENCE FOUND:

Found a 2 1/2" aluminum pipe with a 2 1/2" aluminum cap, marked as shown below, flush with ground in a small collar of stone. From which:

A very deteriorated stump, approximately 25" diameter, bears East, a distance of 3.70 feet, with scribe marks "BT" visible.
A very deteriorated stump, approximately 22" diameter, bears South 55° West, a distance of 3.75 feet, with healed blaze at bottom of stump.

DESCRIPTION OF MONUMENT AND ACCESSORIES I ESTABLISHED TO PERPETUATE THE ORIGINAL LOCATION OF THIS CORNER:

From the aluminum pipe monument

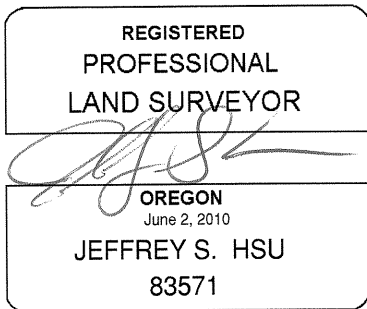
NEW BEARING TREES:

A 3" White Fir bears North 80° East, a distance of 10.80 feet, marked X BT.
A 5" Lodgepole Pine bears South 53° East, a distance of 13.95 feet, marked 1/4 S16 BT.
An 8" White Fir bears North 18° East, a distance of 23.00 feet, marked 1/4 S16 BT.
A 3" White Fir bears North 64° West, a distance of 5.80 feet, marked X BT.

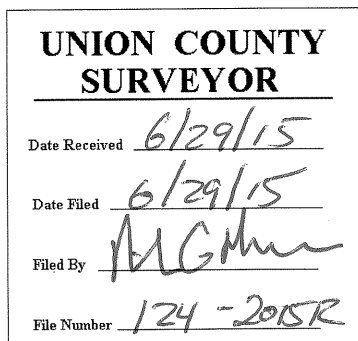
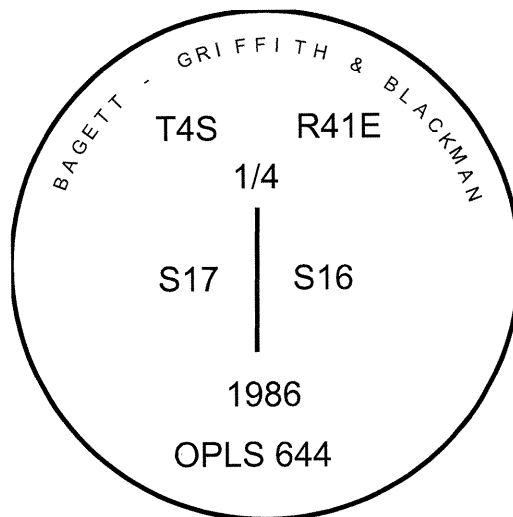
Found a steel fence post approximately 3 feet North of monument.

I hereby certify that this corner was perpetuated on June 9, 2015.

Witness: Thomas J. Kopp



Renewal Date: June 30, 2017



I used a steel tape and magnetic compass in the establishment of the new bearing trees. I used 16° East declination, the distances are to a 60d spike driven into the right side of the root crown of the new bearing trees, and the left side of the N 18° E bearing tree. A brass washer marked OPLS 83571 is attached to the BT blaze of the new bearing trees.