

CERTIFIED RECORD OF LAND CORNER MONUMENTATION

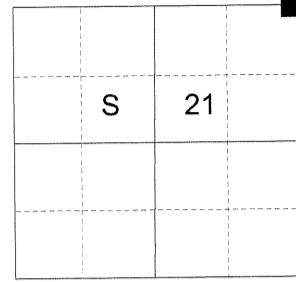
HISTORY OF ORIGINAL CORNER ESTABLISHED:

Corner originally established by David Thompson under GLO contract number 103 dated September 3, 1863. Surveyor General field notes state:

Set post for corner to secs. 15, 16, 21, and 22, in mound of earth with charred stake, pits, trench, as per instructions.

Corner found in 1938 by Union County Highway Department and tied in Union County Road record 20121. Record shows coordinate by local control.

T 4 S R 40 E N-13



DESCRIPTION OF CORNER EVIDENCE FOUND:

None.

SEE SURVEY NUMBER 045-2019

DESCRIPTION OF MONUMENT AND ACCESSORIES I ESTABLISHED TO MONUMENT THE ORIGINAL LOCATION OF THIS CORNER:

At position by survey I set a 5/8" x 30" iron pin, drilled 15" in to rock, with a 2 1/2" aluminum cap marked as shown below, with 3' diam. mound of stone base to top of cap, from which:

NEW BEARING OBJECTS:

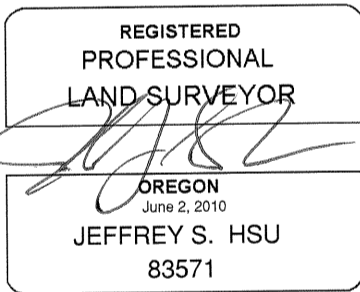
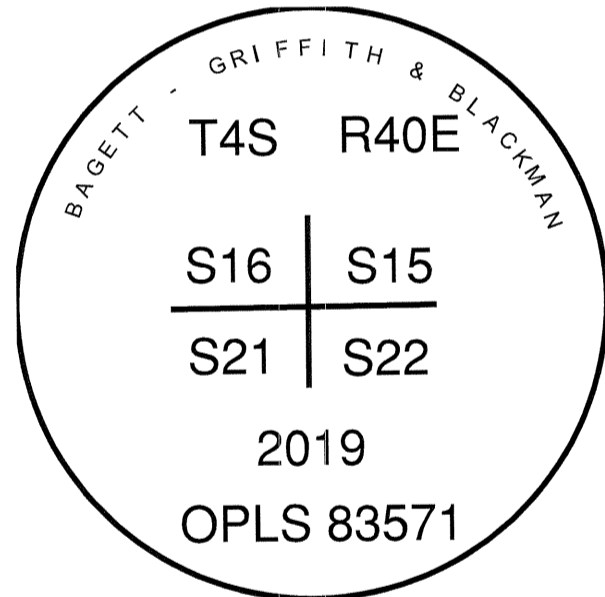
- A rock outcrop bears North 37°46' East a dist. of 9.53 ft., marked X BO.
- A rock outcrop bears South 84°32' East a dist. of 15.52 ft., marked X BO.
- A rock outcrop bears South 32°03' West a dist. of 16.32 ft., marked X BO.
- An 8' x 6' x 4' protruding rock outcrop bears North 68°19' West a dist. of 16.78 ft., marked X BO.

Falls on a rock bluff.

Fence corner to East/West/South bearing fence lines bears South approx. 10'.

I hereby certify that the corner was monumented on November 21, 2019.

Witness: Kyle A. Tucker



Renewal Date: June 30, 2021

UNION COUNTY SURVEYOR

Date Received 12/31/19

Date Filed 12/31/19

Filed By W. G. Miller

File Number 078-2019R

I used a Leica GS18 RTK GPS for the establishment of the new accessories. Basis of bearings is as per Survey Number 045-2019. The distances and bearings are to the center of the "X" on bearing objects.

HORIZONTAL CONTROL DATA

UNION COUNTY, OREGON

OREGON STATE PLANE, NORTH ZONE (3601)

STA NAME: 2020002

SECTION CORNER COMMON TO SECTIONS 15,16,21, AND 22

TWP. 4 S RGE. 40 E.

GEODETIC COORD: NAD 83(91)

DATE TIED: December 31, 2019

LAT: 45 ° 12 ' 33.08186 " N

SURVEYOR: RICK G. ROBINSON
OPLS 2219

LONG: 117 ° 48 ' 32.67874 " W

FIRM: BAGETT, GRIFFITH, & BLACKMAN
2006 ADAMS AVENUE
LAGRANDE, OR 97850
(541) 963-6092

SP. COOR: NAD 83(91)

N: 573907.649 INT FT.

E: 8895459.156 INT FT.

TYPE: GPS

THETA: 1 ° 54 ' 30.1127784 "

ORDER: SECOND CLASS: 1

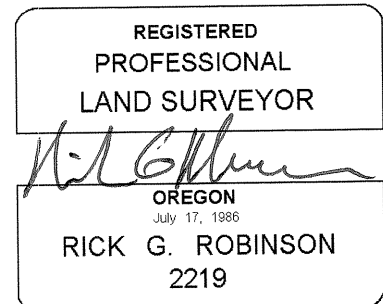
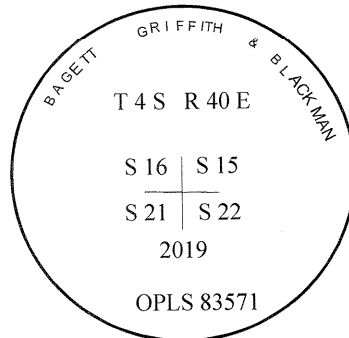
SCALE FACTOR: 0.9998948312

ELEV: 3354.45 US FT.

ELEV: DATUM: NGVD 29

COMMENTS:

5/8" iron pin with 2 1/2" aluminum cap
marked as shown



Renewal Date: December 31, 2020

1 METER = 3.2808333333... US FEET = 39.37 INCHES

1 METER = 3.280839895 INT'L FEET OR 1 INCH = 2.54 CM

TO CALCULATE ELEVATION FACTOR (IN THE NORTH AMERICAN CONTINENT)

DIVIDE 20,906,000 BY (20,906,000 + ELLIPSOID ELEV. IN FEET)