

**CERTIFIED RECORD OF LAND CORNER MONUMENTATION**  
**UNION COUNTY, OREGON**

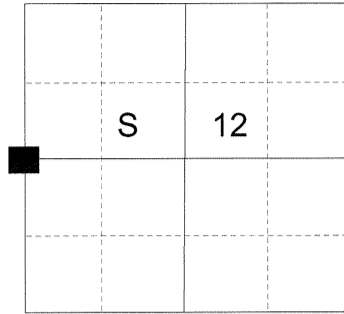
**HISTORY OF ORIGINAL CORNER ESTABLISHED**

Corner originally established by John Stone & Benj. Simpson under GLO Contract No. 235, dated July 6, 1875. Surveyor General field notes states:

Set a stone 16x9x5 for 1/4 Sec Cor.

Corner found by S. B. Morgan in Union County Highway Department survey of Union - High Valley Market Rd. dated 1938.

**T 4 S R 40 E G-21**



**DESCRIPTION OF CORNER EVIDENCE FOUND:**

None

See Survey Number 011-2015

**DESCRIPTION OF MONUMENT AND ACCESSORIES I ESTABLISHED TO PERPETUATE THE ORIGINAL LOCATION OF THIS CORNER:**

At the position determined by survey, I set 2 1/2" x 30" aluminum pipe with a 2 1/2" aluminum cap marked as shown below 25" in the ground with a collar of stone 1 1/2 feet in diameter. From which:

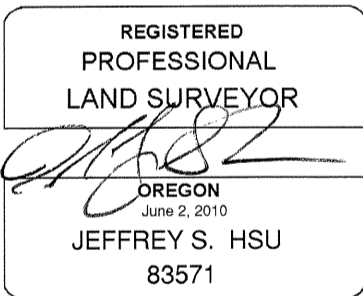
**NEW BEARING OBJECTS:**

- A 5/8" x 30" iron rod bears North 56°44' East, a distance of 10.95 feet, with a 1 1/2" aluminum cap marked UNION COUNTY SURVEYOR NE RP.
- A 5/8" x 30" iron rod bears South 23°00' East, a distance of 13.41 feet, with a 1 1/2" aluminum cap marked UNION COUNTY SURVEYOR SE RP.
- A 5/8" x 30" iron rod bears South 33°22' West, a distance of 14.35 feet, with a 1 1/2" aluminum cap marked UNION COUNTY SURVEYOR SW RP.
- A 5/8" x 30" iron rod bears North 49°04' West, a distance of 13.00 feet, with a 1 1/2" aluminum cap marked UNION COUNTY SURVEYOR NW RP.

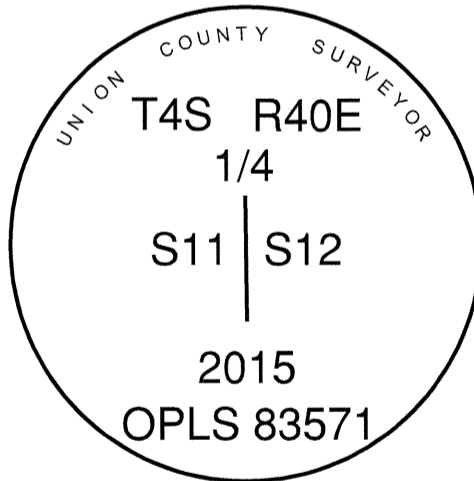
Corner falls +/- 2 feet North of a fence corner.

I hereby certify that this corner was monumented on February 16, 2015.

Witness: Thomas J. Kopp



Renewal Date: June 30, 2015



**UNION COUNTY SURVEYOR**

Date Received 2/25/15

Date Filed 2/25/15

Filed By [Signature]

File Number 065-2015R

Bearing and distance to the iron pins were determined by GPS observation with a Leica GS-14 unit. Basis of Bearing is as per Survey Number 011-2015

**HORIZONTAL CONTROL DATA**  
**UNION COUNTY, OREGON**  
**OREGON STATE PLANE, NORTH ZONE (3601)**

STA NAME: 201505

1/4 SECTION CORNER COMMON TO SECTIONS 11 AND 12

TWP. 4 S. RGE. 40 E.

GEODETIC COORD: NAD 83(91)

DATE TIED: February 16, 2015

LAT: 45 ° 13 ' 50.11831 " N

SURVEYOR: RICK G. ROBINSON  
OPLS 2219

LONG: 117 ° 46 ' 3.72319 " W

FIRM: BAGETT, GRIFFITH, & BLACKMAN  
2006 ADAMS AVENUE  
LAGRANDE, OR 97850  
(541) 963-6092

SP. COOR: NAD 83(91)

N: 582062.698 INT FT.

E: 8905852.655 INT FT.

TYPE: GPS

THETA: 1 ° 56 ' 15.7499745 "

ORDER: SECOND CLASS: 1

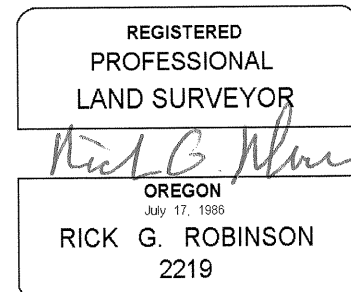
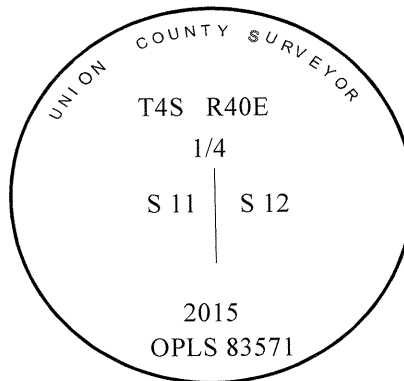
SCALE FACTOR: 0.9998951637

ELEV: 3581.41 US FT.

ELEV: DATUM: NGVD 29

COMMENTS:

2 1/2" Aluminum monument 2 ft. North  
of existing fence corner



Renewal Date: December 31, 2016

1 METER = 3.280833333... US FEET = 39.37 INCHES

1 METER = 3.280839895 INT'L FEET OR 1 INCH = 2.54 CM

TO CALCULATE ELEVATION FACTOR ( IN THE NORTH AMERICAN CONTINENT)

DIVIDE 20,906,000 BY (20,906,000 + ELLIPSOID ELEV. IN FEET)