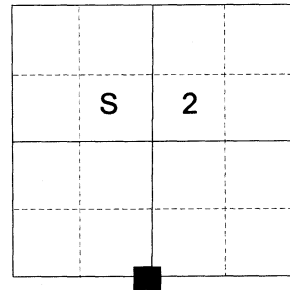


CERTIFIED RECORD OF LAND CORNER MONUMENTATION

HISTORY OF ORIGINAL CORNER ESTABLISHED:

Corner originally established by John H. Stone under GLO joint contract number 235 dated July 6th, 1875. Surveyor General field notes state:
Set a stone 16x14x12 for 1/4 section corner as per instructions

T 4 S R 40 E E-19



DESCRIPTION OF CORNER EVIDENCE FOUND:

Found a fence corner to East/South bearing fence lines with multiple stones of called size. None were found with distinguishable markings. Residents attest to the fact that the found fence corner has not been moved in 60 plus years.

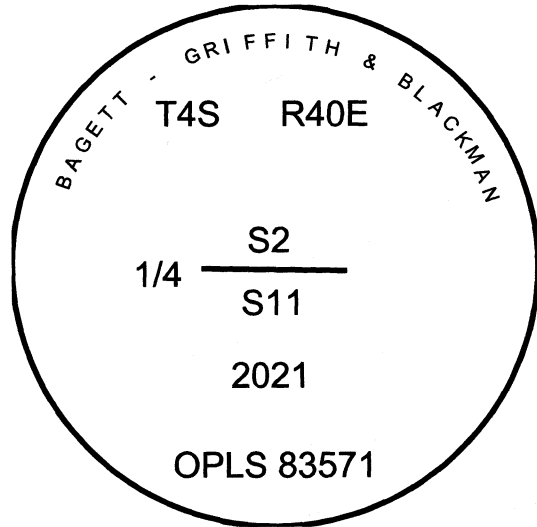
See Survey: 039-2021

DESCRIPTION OF MONUMENT AND ACCESSORIES I ESTABLISHED TO PERPETUATE THE ORIGINAL LOCATION OF THIS CORNER:

At the position of found fence corner I set a 2 1/2" x 30" aluminum pipe, 26" in the ground, with 3" aluminum cap marked as shown with mound of stone 2 ft. diam., from which:

NEW BEARING OBJECTS:

A 5/8" x 30" iron pin bears North 48°27' East, a dist. of 33.64 feet, with 1 1/2" aluminum cap marked NE RP
A 5/8" x 30" iron pin bears South 83°47' East, a dist. of 29.50 feet, with 1 1/2" aluminum cap marked SE RP
A 5/8" x 30" iron pin bears South 87°09' West, a dist. of 31.95 feet, with 1 1/2" aluminum cap marked SW RP
A 5/8" x 30" iron pin bears North 5°30' West, a dist. of 9.84 feet, with 1 1/2" aluminum cap marked NW RP



I hereby certify that the corner was perpetuated on August 9, 2021.

Witness: Kyle A. Tucker

REGISTERED
PROFESSIONAL
LAND SURVEYOR



OREGON
June 2, 2010
JEFFREY S. HSU
83571

Renewal Date: June 30, 2023

I used a Leica GS18 RTK GPS rover in the establishment of the new accessories. Basis of Bearing is as per Survey 039-2021. The distances and bearings are to the center of the aluminum caps.

UNION COUNTY
SURVEYOR

Date Received 8/25/21

Date Filed 8/25/21

Filed By L. G. Gibson Deary

File Number 035-2021R