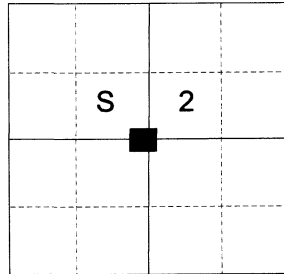


CERTIFIED RECORD OF LAND CORNER MONUMENTATION

HISTORY OF ORIGINAL CORNER ESTABLISHED:

Corner not previously established

T 4 S R 40 E C-19



DESCRIPTION OF CORNER EVIDENCE FOUND:

None

See Survey 039-2021

DESCRIPTION OF MONUMENT AND ACCESSORIES I ESTABLISHED TO MONUMENT THE ORIGINAL LOCATION OF THIS CORNER:

Calculated position by survey falls on a rocky bluff. At position South 0°31'33" East, a distance of 2.50 feet, I set a 2 1/2" x 30" aluminum pipe witness corner, 6" in the ground, with 2 1/2" aluminum cap marked as shown, with a mound of stone 5 feet diameter base to top of cap, from which:

NEW BEARING OBJECTS:

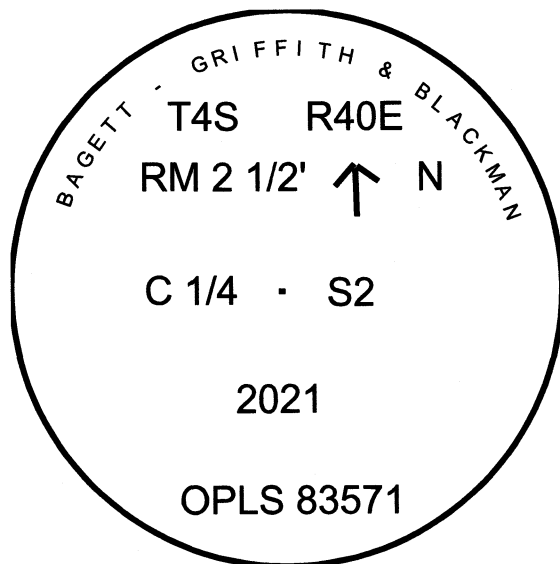
- A large rock outcrop bears North 31°34' East a dist. of 7.14 ft., marked X BO (facing up)
- A large rock outcrop bears South 64°34' East a dist. of 7.68 ft., marked X BO (facing Westerly)
- A 2'x2' embedded stone bears South 73°10' West a dist. of 6.82 ft., marked X BO (facing up)
- A large rock outcrop bears North 54°46' East a dist. of 9.68 ft., marked X BO (facing Southeasterly)

An East/West fence line bears South approx. 1 ft. from the witness corner

A fence corner with North/East/West bearing fence lines falls approx. 63 feet East

I hereby certify that the corner was monumented on August 9, 2021.

Witness: Kyle Tucker



Renewal Date: June 30, 2023

UNION COUNTY SURVEYOR

Date Received 8/29/21

Date Filed 8/29/21

Filed By Nicholas Deary

File Number 033-2021 R

I used a Leica GS18 in the establishment of the new accessories. Basis of Bearing is as per Survey 039-2021, the distances and bearings are to the center of the "X".