

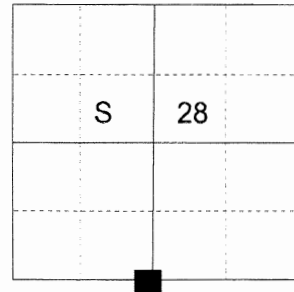
CERTIFIED RECORD OF LAND CORNER MONUMENTATION

HISTORY OF ORIGINAL CORNER ESTABLISHED:

Corner originally established by W.B. Barr under GLO contract 388, dated May 7, 1881. Surveyor General field notes state:

Set Stake 4 ft. long 4 in. diam. 18 in. ground for 1/4 sec corner, from which:
Fir 7 in. diam. bears N25°E, 45 lks. dist.
Tamarack 3 in. diam. bears S20°W, 9 lks. dist.

T 4 S R38S E V-11



DESCRIPTION OF CORNER EVIDENCE FOUND:

Found an 1 1/4" Iron pipe, protruding approx. 2 ft. above ground. Position of pipe is harmonious in bearing and distance to the Southwest corner of Section 28.

SEE SURVEY NUMBER 018-2016

DESCRIPTION OF MONUMENT AND ACCESSORIES I ESTABLISHED

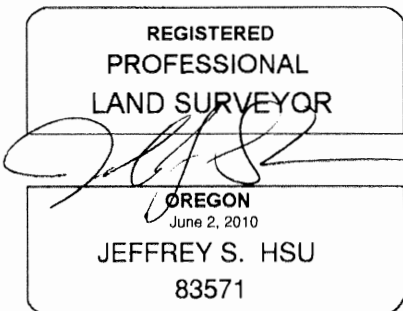
TO PERPETUATE THE ORIGINAL LOCATION OF THIS CORNER:

At the pipe position, I set a 2 1/2" x 30" aluminum pipe with 2 1/2" aluminum cap, marked as shown below, 26 inches in the ground, from which:

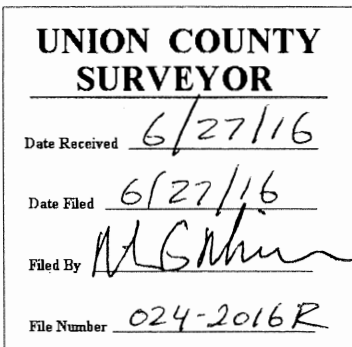
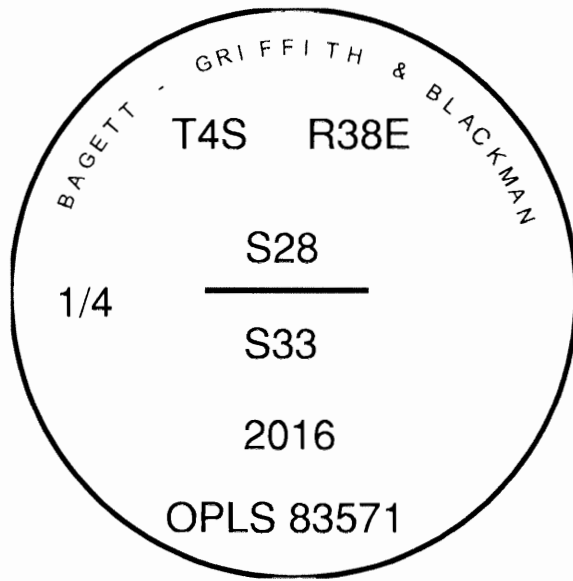
NEW BEARING OBJECTS:

- A 5" Ponderosa Pine bears North 53° East, a distance of 44.70 feet, marked 1/4 S28 BT.
- An 8" Western Larch bears South 55° East, a distance of 50.50 feet, marked 1/4 S33 BT.
- An 11" Ponderosa Pine bears South 82° West, a distance of 13.25 feet, marked 1/4 S33 BT.
- A 7" Ponderosa Pine bears North 39° West, a distance of 24.60 feet, marked 1/4 S28 BT.

Set a steel fencepost approximately 0.5 foot North of the corner monument. Drove pipe alongside steel fencepost.
I hereby certify that this monument was set June 21, 2016.



Renewal Date: June 30, 2017



I use a steel tape and magnetic compass in the establishment of the bearing trees. Magnetic declination used was 15° East. Distances to the new trees are to a spike in the root crown of the trees. Bearings are to a brass washer in the lower blaze marked OPLS 83571.