

USDA-FOREST SERVICE

Index
File No. V-9

CORNER RECORD (SEARCH)
(Ref. FSM 7151.4)

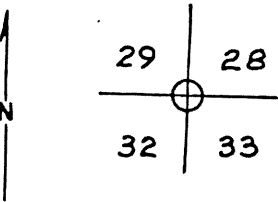
Tract or
Survey No. _____

Cor. SW COR.
No. SEC. 28

T 4S R. 38E R.D. LA GRANDE County UNION

Merid. WILLAMETTE N.F. W-W State OREGON

CORNER DIAGRAM



DESCRIBE CORNER MONUMENT FOUND

DESCRIBE BEARING TREES OR OTHER OFFICIAL ACCESSORIES FOUND

SOMEONE has driven a 3/4" plumber's pipe for cor. Both BOISE CASCADE & U.S.F.S (1939). Bearing tree tags here. Could see no evidence of original survey.

DESCRIBE CORNER LOCATION RELATIVE TO NEAR-BY FEATURES, ALSO HOW TO REACH CORNER

only 200' (approx) South of 54035. Sec. lines painted & blazed N. & E. from cor., to road, by others.

PHOTO IDENTIFICATION DATA

Photo No. _____
Filed At. _____
Object Ident. _____
Ident. By _____
Signature

PLANE COORDINATE POSITION DATA

State _____ Zone _____
X _____
Y _____
Estab. By _____
Agency

Signature	Title	Division	Headquarters	Date	7100-52 (3. 68)
<i>GLEN A. WEIDEMAN - CADASTRAL SURVEYOR.</i>	<i>W-W N.F.</i>			<i>7/30/79</i>	

UNION COUNTY SURVEYOR

Date Received _____

Date Filed 12-23-87

By G. LANGLITZ, DEPUTY

File No. 340-87R

V-9

UNION COUNTY SURVEYOR

CERTIFIED RECORD OF LAND CORNER MONUMENTATION

HISTORY OF ORIGINAL CORNER ESTABLISHMENT:

Corner originally established by W.B. Barr under GLO Contract Number 388, dated May 7, 1881.

T 4 S R 38 E V - 09

Surveyor General record states:

Marked a 6 in dia black pine for Cor to Secs 28, 29, 32, 33 from which:

Black Pine 10 in diam bears N22°E 10 lks dist

Black Pine 14 in diam bears S58°E 12 lks dist

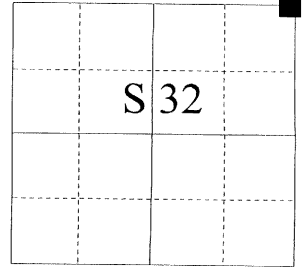
Black Pine 6 in diam bears S52°W 21 lks dist

Black Pine 8 in diam bears N73°W 8 lks dist

Corner was visited by Glen Weideman 7/30/1979 and documented by Union County monumentation record number 340-87R. Mr. Weideman states "someone has

driven a 3/4" plumbing pipe for cor. Both Boise Cascade & USFS (1939) bearing tree tags here. Could see no evidence of original survey. Sec lines

painted and blazed N & E from cor to road by others.



No record of subsequent monumentation found in Union County survey records.

DESCRIPTION OF CORNER EVIDENCE FOUND:

Found 3/4" pipe, 12" exposed, bent flat to ground by fallen snag. Above described tag on tree to the NE of corner. Found blazes North, East and West from corner. Area has been logged severely. I accept the pipe and supporting evidence as the best available evidence of the original corner position.

DESCRIPTION OF MONUMENT AND ACCESSORIES I ESTABLISHED

TO PERPETUATE THE ORIGINAL LOCATION OF THIS CORNER:

At the position of the found pipe, determined by said survey, I set a 2 1/2" x 30" aluminum pipe with aluminum cap marked as shown below, 26" in the ground, from which:

New Bearing Trees:

An 18 inch diameter White Fir bears N 33°E, a distance of 103.87 feet, marked T4S R38E S28 BT

A 12 inch diameter Lodgepole Pine bears S 34°E, a distance of 132.24 feet, marked T4S R38E S33 BT

An 18 inch diameter Douglas Fir bears S 63°W, a distance of 44.97 feet, marked T4S R38E S32 BT

A 12 inch diameter Tamarack bears N 7°W, a distance of 78.83 feet, marked T4S R38E S29 BT

Set a steel fence post approximately 2 ft. North of monument.

I hereby certify that the corner was monumented on June 28, 2003.

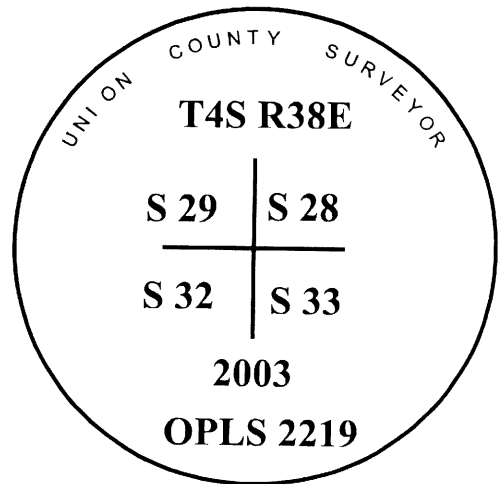
UNION COUNTY SURVEYOR

Date Received 7/18/03

Date Filed 9/12/03

Filed By [Signature]

File Number 032-2003R



REGISTERED PROFESSIONAL LAND SURVEYOR

[Signature]

OREGON
July 17, 1986

RICK G. ROBINSON
2219

I used a steel tape and magnetic compass in the establishment of these accessories. I used a magnetic declination of 18° East. The distances are to a 50d spike driven on the right side of the root crown. I attached a brass washer marked OPLS 2219 to the BT blaze.

HORIZONTAL CONTROL DATA

UNION COUNTY, OREGON

OREGON STATE PLANE, NORTH ZONE (3601)

STA NAME: 200303

CORNER COMMON TO: 28,29,32,&33

TWP. 4 S. RGE. 38 E.

GEODETIC COORD: NAD 83(91)

DATE TIED: June 2003

LAT: 45 ° 10 ' 50.35805 " N

SURVEYOR: RICK G. ROBINSON
OPLS 2219

LONG: 118 ° 4 ' 33.36155 " W

FIRM: BAGETT, GRIFFITH, & BLACKMAN
2006 ADAMS AVENUE
LAGRANDE, OR 97850
(541) 963-6092

SP. COOR: NAD 83(91)

N: 561332.592 INT FT.

E: 8827033.195 INT FT.

TYPE: GPS

THETA: 1 ° 43 ' 8.8099637 "

ORDER: SECOND CLASS: 1

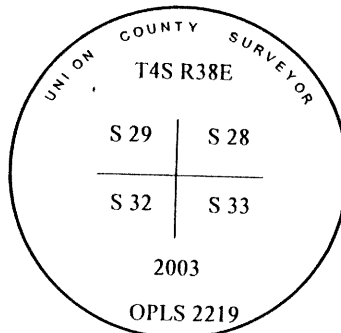
SCALE FACTOR: 0.9998946042

ELEV: 4905.58 US FT.

ELEV: DATUM: NGVD 29

COMMENTS:

Corner is 2 ½" aluminum monument
Approximately 200 feet South of Ladd Creek Rd.



Renewal Date December 31, 2004

1 METER = 3.2808333333... US FEET = 39.37 INCHES

1 METER = 3.280839895 INT'L FEET OR 1 INCH = 2.54 CM

TO CALCULATE ELEVATION FACTOR (IN THE NORTH AMERICAN CONTINENT)

DIVIDE 20,906,000 BY (20,906,000 + ELLIPSOID ELEV. IN FEET)