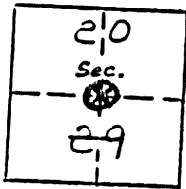


RECOVERY NOTES
 BOISE CASCADE CORP.
 PROPERTY CORNER INVESTIGATION

R-7
 LOCATION



1/4 corner

T. 45 R. 38E
 Mer. State
 Forest Dist.
 Compartment or Tract *Glasshill*

LEGEND

- Corner searched-no evidence
- Corner or accessory found
- Corner marked by perm. mon.

DESCRIPTION OF FOUND CORNER

MATERIAL: _____ SIZE: _____
 HEIGHT ABOVE GROUND: _____ CONDITION: _____
 MARKINGS: _____

DESCRIPTION OF FOUND ACCESSORIES

16" WF live bearing tree
 12" DF snag bearing tree 35' snag
 yellow location poster facing N 30°E
 on a 32" WF snag 40' high
 (see other side)

Note: Indicate full investigative details on back of form and where
 cruise tag placed in reference to corner.

PHOTO IDENTIFICATION

Symbol & date _____ Line or Roll _____ Exposure _____
 How Identified _____ Where filed _____

RECOVERED BY: _____

DATE: _____ TITLE: _____

**UNION COUNTY
 SURVEYOR**

Date Received 1-4-88
 Date Filed 1-7-88
 By G. LANGLITZ, DEPUTY
 File No. 12-88R

R-7

CERTIFIED RECORD OF LAND CORNER MONUMENTATION

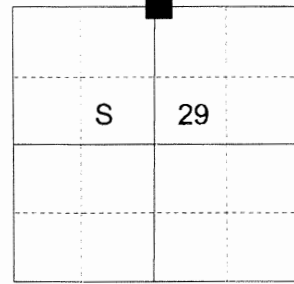
HISTORY OF ORIGINAL CORNER ESTABLISHED:

Corner originally established by W.B. Barr under GLO contract 388, dated May 7, 1881. Surveyor General field notes state:

Marked fir 5 in. diam. for 1/4 Sec corner, from which:
Fir 8 in. diam. bears S20°W, 18 lks. dist.
Fir 10 in. diam. bears N25°W, 12 lks. dist.

Boise Cascade corner card, date unknown, filed as Union County Monumentation Record 12-88R indicates a live White Fir bearing tree and a Douglas Fir snag bearing tree were found with an adjacent snag bearing a yellow location poster.

T 4 S R38S E R-07



DESCRIPTION OF CORNER EVIDENCE FOUND:

None.

SEE SURVEY NUMBER 018-2016

DESCRIPTION OF MONUMENT AND ACCESSORIES I ESTABLISHED

TO PERPETUATE THE ORIGINAL LOCATION OF THIS CORNER:

At proportionate position, I set a 2 1/2" x 30" aluminum pipe with 2 1/2" aluminum cap, marked as shown below, 28 inches in the ground, in a collar of stone 1 ft. diam., from which:

NEW BEARING OBJECTS:

A 9" White Fir bears North 71° East, a distance of 40.40 feet, marked 1/4 S20 BT.

An 11" Douglas Fir bears South 15° East, a distance of 16.40 feet, marked 1/4 S29 BT.

A 5" Ponderosa Pine bears South 51° West, a distance of 22.30 feet, marked 1/4 S29 BT.

An 8" Ponderosa Pine bears North 68° West, a distance of 10.40 feet, marked 1/4 S20 BT.

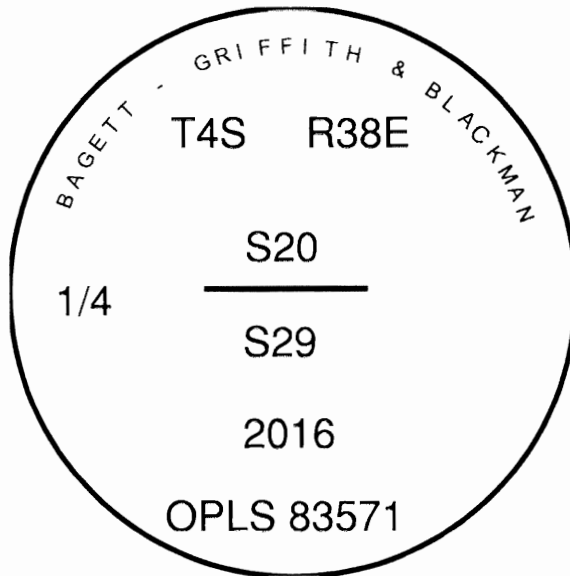
Set a steel fencepost approximately 1 foot North of the corner monument. Corner falls 15 feet West of a North/South running logging road.

I hereby certify that this monument was set June 22, 2016.

REGISTERED
PROFESSIONAL
LAND SURVEYOR

OREGON
June 2, 2010
JEFFREY S. HSU
83571

Renewal Date: June 30, 2017



**UNION COUNTY
SURVEYOR**
Date Received 6/27/16
Date Filed 6/27/16
Filed By ALG
File Number 019-2016R

I use a steel tape and magnetic compass in the establishment of the bearing trees. Magnetic declination used was 15° East. Distances to the new trees are to a spike in the root crown of the trees. Bearings are to a brass washer in the lower blaze marked OPLS 83571.

HORIZONTAL CONTROL DATA

UNION COUNTY, OREGON

OREGON STATE PLANE, NORTH ZONE (3601)

STA NAME: 2018002

1/4 SECTION CORNER COMMON TO SECTIONS 20 AND 29

TWP. 4 S RGE. 38 E.

GEODETIC COORD: NAD 83(91)

DATE TIED: January 3, 2018

LAT: 45 ° 11 ' 42.22383 " N

SURVEYOR: RICK G. ROBINSON
OPLS 2219

LONG: 118 ° 5 ' 8.90991 " W

FIRM: BAGETT, GRIFFITH, & BLACKMAN
2006 ADAMS AVENUE
LAGRANDE, OR 97850
(541) 963-6092

SP. COOR: NAD 83(91)

N: 566506.572 INT FT.

E: 8824331.326 INT FT.

TYPE: GPS

THETA: 1 ° 42 ' 43.599563 "

ORDER: SECOND CLASS: 1

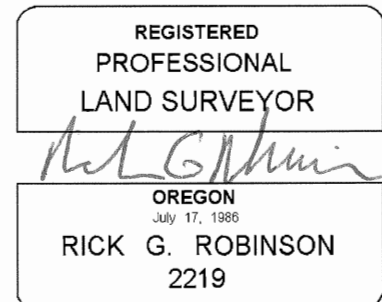
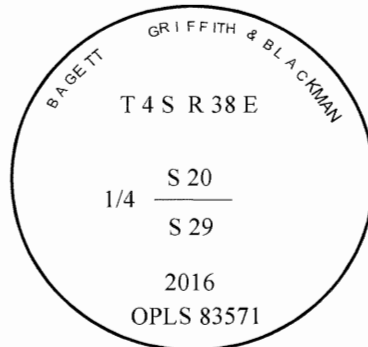
SCALE FACTOR: 0.9998946879

ELEV: 4975.09 US FT.

ELEV: DATUM: NGVD 29

COMMENTS:

2 1/2" aluminum pipe with 2 1/2" aluminum cap marked as shown, set in mound of stone.



Renewal Date: December 31, 2018

1 METER = 3.280833333... US FEET = 39.37 INCHES

1 METER = 3.280839895 INT'L FEET OR 1 INCH = 2.54 CM

TO CALCULATE ELEVATION FACTOR (IN THE NORTH AMERICAN CONTINENT)

DIVIDE 20,906,000 BY (20,906,000 + ELLIPSOID ELEV. IN FEET)