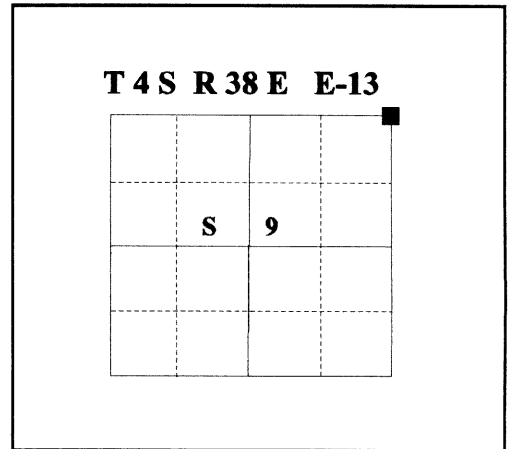


CERTIFIED RECORD OF LAND CORNER MONUMENTATION

HISTORY OF ORIGINAL CORNER ESTABLISHMENT:

Corner originally established by William B. Barr under GLO contract Number 388, dated May 7, 1881. Surveyor General record states:

- Set basalt rock 14 x 12 x 4 ins. from which;
- A 12in. Fir bears N47°E, 24 lks.
 - A 24in. Fir bears N44°W, 22 lks.
 - A 8in. Fir bears S7°E, 16 lks.
 - A 8in. Fir bears S11°W, 40 lks.



No record of subsequent monumentation found in Union County survey records.

DESCRIPTION OF CORNER EVIDENCE FOUND:

In the immediate area of the position determined from the bearing trees I found a basalt rock 14x12x4 inches, no marks visible, alongside a 2" x 36" galvanized iron pipe with an unmarked cap buried about 6 inches. Found a 28" White Fir, live and vigorous, scribes visible. Found a 10" White Fir, dead, down, scribes visible. Found a 21" White Fir, blaze evident, sick and dying.

See survey 037-1995

DESCRIPTION OF MONUMENT AND ACCESSORIES I ESTABLISHED TO PERPETUATE THE ORIGINAL LOCATION OF THIS CORNER:

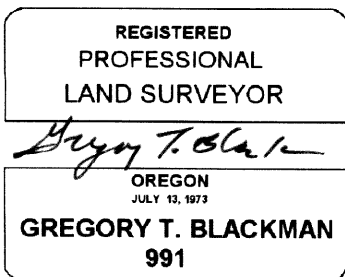
At record bearing and distance from found bearing trees, I set a 2½" x 30" aluminum pipe with aluminum cap marked as shown, 28 inches in the ground, from which;

NEW BEARING TREES:

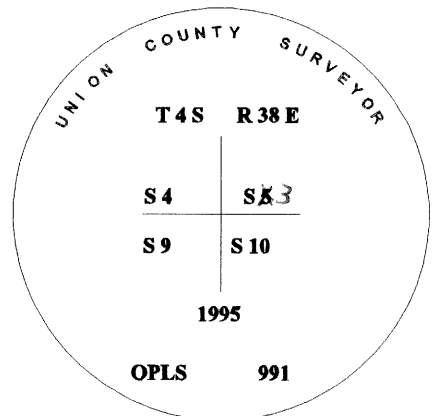
- A 16 inch White Fir bears S 43° E, 27.17 feet, marked T4S R38E S10 BT
- A 10 inch Ponderosa Pine bears S 10° E, 41.67 feet, marked S10 BT
- A 11 inch White Fir bears N 24° W, 24.08 feet, marked T4S R38E S4 BT

- Buried stone East.
- Raised small mound of stone around monument.
- Drove steel fence post 5± FT. West.

I hereby certify that the corner was monumented on August 9, 1995.
Witness: Travis Foster, Peter Crabtree



Renewal Date: December, 31 1995



UNION COUNTY SURVEYOR

Date Received 12-26-95

Date Filed 12-29-95

Filed By R. ROBINSON, DEPUTY

File Number 044-1995R

I used a steel tape and magnetic compass in the establishment of the new accessories. I used 18° East declination, the distances are to a 50d spike driven in the right side of the root crown. I attached a brass washer marked OPLS 991 to the bearing tree blaze.

HORIZONTAL CONTROL DATA

UNION COUNTY, OREGON

OREGON STATE PLANE, NORTH ZONE (3601)

STA NAME: 2017019

SECTION CORNER COMMON TO SECTIONS 3, 4, 9 AND 10

TWP. 4 S. RGE. 38 E.

GEODETIC COORD: NAD 83(91)

DATE TIED: September 25, 2017

LAT: 45 ° 14 ' 17.90937 " N

SURVEYOR: RICK G. ROBINSON
OPLS 2219

LONG: 118 ° 3 ' 17.73765 " W

FIRM: BAGETT, GRIFFITH, & BLACKMAN
2006 ADAMS AVENUE
LAGRANDE, OR 97850
(541) 963-6092

SP. COOR: NAD 83(91)

N: 582505.383 INT FT.

E: 8831811.107 INT FT.

TYPE: GPS

THETA: 1 ° 44 ' 2.44137814 "

ORDER: SECOND CLASS: 1

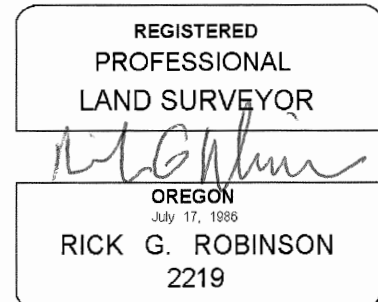
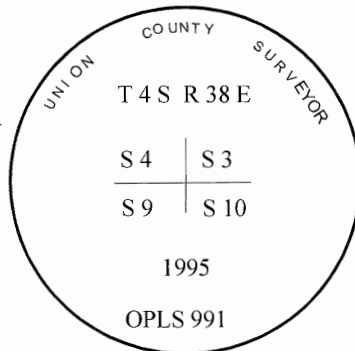
SCALE FACTOR: 0.9998953178

ELEV: 4139.62 US FT.

ELEV: DATUM: NGVD 29

COMMENTS:

2 1/2" aluminum monument with cap marked as shown.



1 METER = 3.2808333333... US FEET = 39.37 INCHES

1 METER = 3.280839895 INT'L FEET OR 1 INCH = 2.54 CM

TO CALCULATE ELEVATION FACTOR (IN THE NORTH AMERICAN CONTINENT)

DIVIDE 20,906,000 BY (20,906,000 + ELLIPSOID ELEV. IN FEET)