

CERTIFIED RECORD OF LAND CORNER MONUMENTATION

HISTORY OF ORIGINAL CORNER ESTABLISHMENT:

Corner originally established by Timothy W Davenport under GLO contract Number 102, dated July 20, 1863. Surveyor General record states:

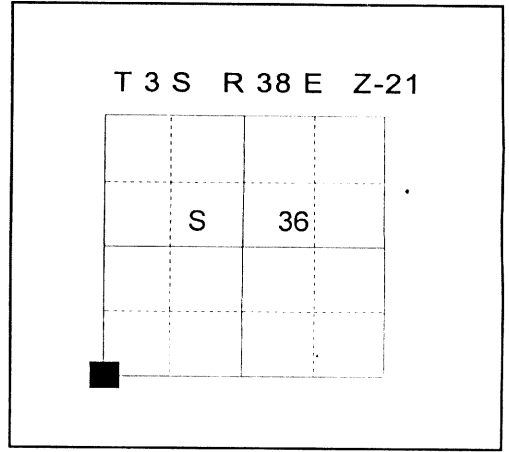
Set post for corner to sections 35, 36, 1, & 2 in mound of earth with charred stakes, pits, and trenches as per instructions.

No record of subsequent monumentation found in Union County survey records

DESCRIPTION OF CORNER EVIDENCE FOUND:

NONE

See Survey Number 034-1998



DESCRIPTION OF MONUMENT AND ACCESSORIES I ESTABLISHED

TO PERPETUATE THE ORIGINAL LOCATION OF THIS CORNER:

At position determined by survey, I set a 2½" brass cap marked as shown below on 5/8" x 30" copper rod, set 6" below the road surface, from which;

A 5/8" x 30" iron pin with 1½" aluminum cap bears N38°E, 55.11 feet marked BGB SURVEY MARKER S 36 RP.

A 5/8" x 30" iron pin with 1½" aluminum cap bears S35°E, 59.07 feet marked BGB SURVEY MARKER S 1 RP.

A 5/8" x 30" iron pin with 1½" aluminum cap bears S28°W, 60.72 feet marked BGB SURVEY MARKER S 2 RP.

A 5/8" x 30" iron pin with 1½" aluminum cap bears N27°W, 65.83 feet marked BGB SURVEY MARKER S 35 RP.

I hereby certify that the corner was monumented on August 27, 1998.

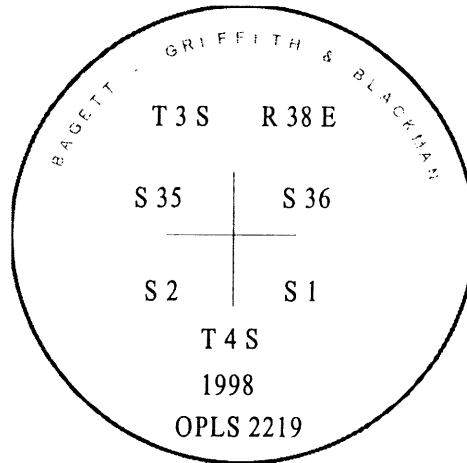
Witness: Greg Engelgau, Jeff Madsen

REGISTERED
PROFESSIONAL
LAND SURVEYOR

Rick G. Robinson

OREGON
July 17, 1986
RICK G. ROBINSON
2219

Renewal Date December 31, 1998



**UNION COUNTY
SURVEYOR**

Date Received 9/14/98

Date Filed 9/26/98

Filed By *Laura T. Black*

File Number 074-1998R

I used a steel tape and magnetic compass in the establishment of the new accessories. I used 18° East declination. The distances to the accessories are to the center of the aluminum cap.

HORIZONTAL CONTROL DATA

UNION COUNTY, OREGON

OREGON STATE PLANE, NORTH ZONE (3601)

STA NAME: 200606

SECTION CORNER COMMON TO SECTIONS: 35, 36, 1 and 2

TWP. 3 S. RGE. 38 E.
& 4

GEODETIC COORD: NAD 83(91)

DATE TIED: October 3, 2006

LAT: 45 ° 15 ' 11.17510 " N

SURVEYOR: RICK G. ROBINSON
OPLS 2219

LONG: 118 ° 0 ' 51.97645 " W

FIRM: BAGETT, GRIFFITH, & BLACKMAN
2006 ADAMS AVENUE
LAGRANDE, OR 97850
(541) 963-6092

SP. COOR: NAD 83(91)

N: 588215.415 INT FT.

E: 8842069.625 INT FT.

TYPE: GPS

THETA: 1 ° 45 ' 45.8131832 "

ORDER: SECOND CLASS: 1

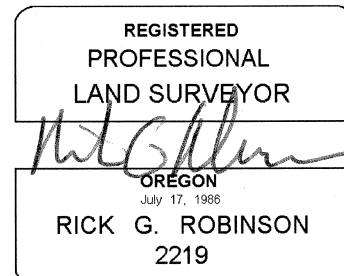
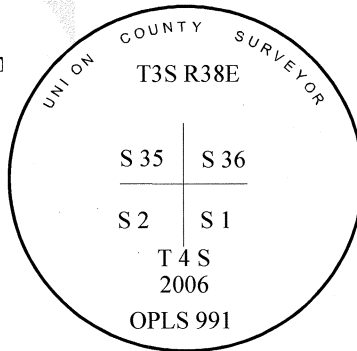
SCALE FACTOR: 0.9998956638

ELEV: 2737.47 US FT.

ELEV: DATUM: NGVD 29

COMMENTS:

Corner is a 5/8"x30" "copper clad" iron pin
with 2 1/2" brass cap marked as shown:



1 METER = 3.2808333333... US FEET = 39.37 INCHES

1 METER = 3.280839895 INT'L FEET OR 1 INCH = 2.54 CM

TO CALCULATE ELEVATION FACTOR (IN THE NORTH AMERICAN CONTINENT)

DIVIDE 20,906,000 BY (20,906,000 + ELLIPSOID ELEV. IN FEET)