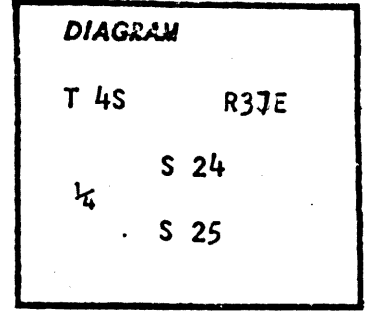


CERTIFIED RECORD OF LAND CORNER MONUMENTATION

R-23

History of original corner establishment:

Corner established in 1882 by Herman D. Gradin under General Land Office Contract No. 452. Surveyor General Record states:



Set basalt stone 16x7x5 marked 1/4 for 1/4 section corner, from which:

- A pine 30 in. dia. bears North 4 links
- A pine 36 in. dia. bears S30E 60 links

No record of subsequent remonumentation found in County records. Description of corner evidence found:

- Found stone 16x8x6 marked 1/4 loose on ground, 7 feet southeast of corner
- Found dead & down 30 in. dia., more or less, pine S40E, 39.6 feet, scribes visible.
- Found 30 in. pine stump North 2.6 feet, no scribes visible.

See map of survey dated June 1980

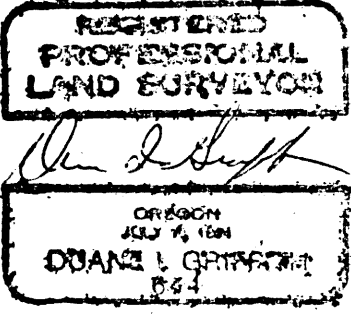
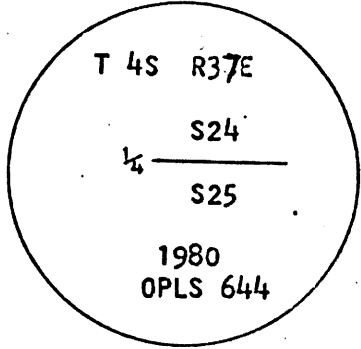
Description of monument and accessories established to perpetuate the original location of this corner:

At record distances from BTs I set 2 1/2" x 30" iron pipe with brass cap marked as shown, 26" in ground, from which:

New BTs:

- A 16 in. dia. pine bears S69W, 55.4 feet marked 1/4 S25 BT
- A 8 in. dia. fir bears N15W, 72.3 feet marked 1/4 S24 BT

Buried stone east of pipe



Brass washer nailed to B.T.blaze. Used steel tape and magnetic compass with 18° East declination. Measured to center of all B.T.s

Office of..... County of.....
State of..... I hereby certify that the within instrument was filed in this office for record on the..... day of....., 19.....

..... by
(COUNTY OFFICIAL) (DEPUTY)

UNION COUNTY SURVEYOR

Date Received _____

Date Filed _____

By _____

File No. 508-84 R

CERTIFIED RECORD OF LAND CORNER MONUMENTATION

HISTORY OF ORIGINAL CORNER ESTABLISHED:

Corner originally established in 1882 by Herman D. Gradon under GLO Contract No. 452., dated June 16, 1882. Surveyor General field notes state:

Set basalt stone 16x7x5 marked 1/4 for 1/4 section corner, From which:
A pine 30 in. Dia. Bears North 4 links
A pine 36 in. Dia. Bears S30°E 60 links

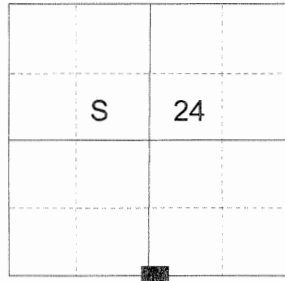
In Survey Number 48-80, corner was brought to County Standard by Duane Griffith. Union County Monumentation record 508-84R states:

Found stone 16x8x6 marked 1/4 loose on ground, 7 feet southeast of corner. Found dead and down 30 in. Dia,. More or less, pine S40°E, 39.6 feet, scribes visible. Found 30 in. Pine stump North 2.6 feet, no scribes visible. At record distances from BT's he set 2 1/2" x 30" iron pipe with brass cap marked as shown, 26" in ground.

From which he established new BT's:
A 16 in. dia. Pine bears S69°W, 55.4 feet marked 1/4 S25 BT
An 8 in. dia. Fir bears N15°W, 72.3 feet marked 1/4 S24 BT

Buried stone east of pipe

T 4 S R 37 E R-23



DESCRIPTION OF CORNER EVIDENCE FOUND:

2 1/2" iron pipe with 2 1/2" brass cap marked as shown, 6" above ground,

From which:
A 20 in. dia. Ponderosa Pine bears S69°W, a distance of 55.4 feet alive with healed blaze
A 12 in. dia. Douglas Fir bears N15°W, a distance of 72.3 feet alive and vigorous with partially healed blaze, scribe marks "BT" visible on lower blaze

DESCRIPTION OF MONUMENT AND ACCESSORIES I ESTABLISHED TO PERPETUATE THE ORIGINAL LOCATION OF THIS CORNER:

From the Iron pipe monument,

NEW BEARING TREES:

A 11" Ponderosa Pine bears N 15° E, a distance of 28.45 feet, marked 1/4 S24 BT.
A 11" Ponderosa Pine bears S 21° E, a distance of 43.15 feet, marked 1/4 S15 BT.

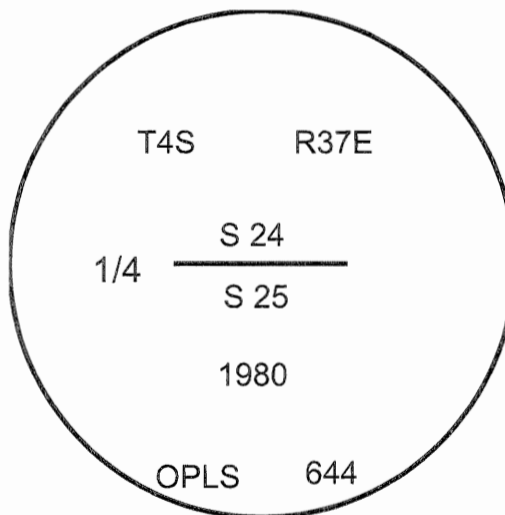
An East/West fence falls 6.5 feet South of monument. Found steel fenceposts 5' East and West of monument.

I hereby certify that the corner was perpetuated July 11, 2017.

Witness: Kyle Tucker



Renewal Date: June 30, 2019



UNION COUNTY SURVEYOR
Date Received 7/26/17
Date Filed 7/26/17
Filed By [Signature]
File Number 032-2017R

I used a steel tape and magnetic compass in the establishment of the bearing trees. Magnetic declination used was 13° East. Bearings are to a brass washer marked OPLS 83571 in the lower blaze of the new trees. Distance is to a spike set in the root crown of the side of the new trees.

HORIZONTAL CONTROL DATA
UNION COUNTY, OREGON
OREGON STATE PLANE, NORTH ZONE (3601)

STA NAME: 2017016

1/4 SECTION CORNER COMMON TO SECTIONS 24 AND 25

TWP. 4 S RGE. 37 E.

GEODETIC COORD: NAD 83(91)

DATE TIED: July 13, 2017

LAT: 45 ° 11 ' 43.58738 " N

SURVEYOR: RICK G. ROBINSON
OPLS 2219

LONG: 118 ° 7 ' 34.91431 " W

FIRM: BAGETT, GRIFFITH, & BLACKMAN
2006 ADAMS AVENUE
LAGRANDE, OR 97850
(541) 963-6092

SP. COOR: NAD 83(91)

N: 566334.867 INT FT.

E: 8813877.236 INT FT.

TYPE: GPS

THETA: 1 ° 41 ' 0.05528729 "

ORDER: SECOND CLASS: 1

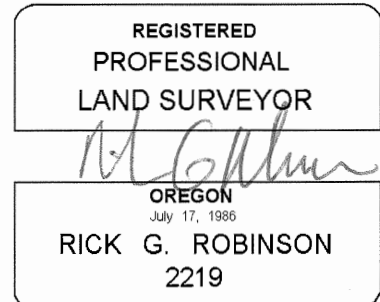
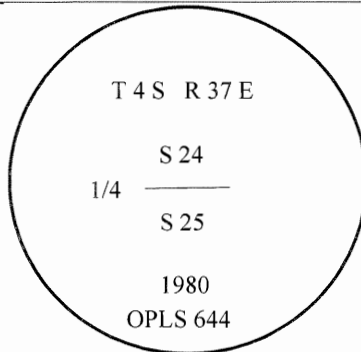
SCALE FACTOR: 0.9998946909

ELEV: 4735.99 US FT.

ELEV: DATUM: NGVD 29

COMMENTS:

2 1/2" iron pipe with 2 1/2" brass cap marked
as shown.



Renewal Date: December 31, 2018

1 METER = 3.2808333333... US FEET = 39.37 INCHES

1 METER = 3.280839895 INT'L FEET OR 1 INCH = 2.54 CM

TO CALCULATE ELEVATION FACTOR (IN THE NORTH AMERICAN CONTINENT)

DIVIDE 20,906,000 BY (20,906,000 + ELLIPSOID ELEV. IN FEET)

HORIZONTAL CONTROL DATA
UNION COUNTY, OREGON
OREGON STATE PLANE, NORTH ZONE (3601)

STA NAME: 2018030

1/4 SECTION CORNER COMMON TO SECTIONS 24 AND 25

TWP. 4 S RGE. 37 E.

GEODETIC COORD: NAD 83(91)

DATE TIED: September 10, 2018

LAT: 45 ° 11 ' 43.58774 " N

SURVEYOR: RICK G. ROBINSON
OPLS 2219

LONG: 118 ° 7 ' 34.91522 " W

FIRM: BAGETT, GRIFFITH, & BLACKMAN
2006 ADAMS AVENUE
LAGRANDE, OR 97850
(541) 963-6092

SP. COOR: NAD 83(91)

N: 566334.901 INT FT.

E: 8813877.170 INT FT.

TYPE: GPS

THETA: 1 ° 41 ' 0.0546376 "

ORDER: SECOND CLASS: 1

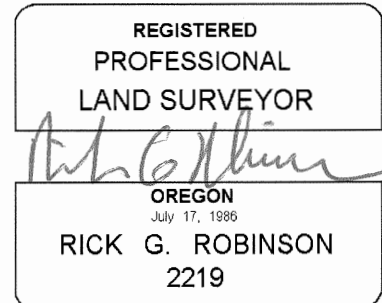
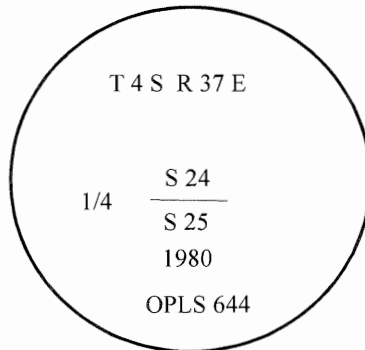
SCALE FACTOR: 0.9998946909

ELEV: 4736.01 US FT:

ELEV: DATUM: NGVD 29

COMMENTS:

2 1/2" brass cap on iron pipe set
6" above ground level, with cap marked
as shown.



Renewal Date: December 31, 2018

1 METER = 3.2808333333... US FEET = 39.37 INCHES

1 METER = 3.280839895 INT'L FEET OR 1 INCH = 2.54 CM

TO CALCULATE ELEVATION FACTOR (IN THE NORTH AMERICAN CONTINENT)

DIVIDE 20,906,000 BY (20,906,000 + ELLIPSOID ELEV. IN FEET)