

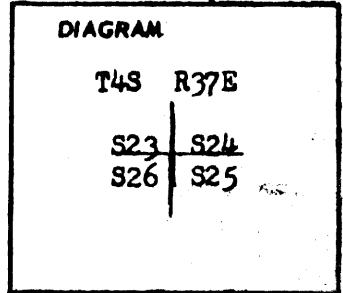
8-69A

CERTIFIED RECORD OF LAND CORNER MONUMENTATION

R-21

History of original corner establishment:

Original survey by contract N. 452 Dated June 16, 1882  
 The original notes read;  
 Set a post 4 ft. long 4 ins square 24 ins in the ground for corner to secs. 23,24,25 and 26 marked T4S S 24 on N edge, R37E S25 on S edge, S 26 on SW and S23 on NW faces, with 2 notches on S and 1 notch on E edge from which;  
 A black pine 11" in diam bears N50°E 32 lks dist marked T4S R37E S24BT. A fir 14" in Diam bears S40°E 25 lks dist marked T4S R37E S25 BT. A fir 8" in diam bears S30°W 53 lks dist marked T4S R37E S26 BT. A tamarack 6" diam bears N30°W 40 lks dist marked T4S R37E S23 BT



Description of corner evidence found:

no evidence of corner was found  
 Found standing tamarack in good shape. bears N30°W 40 lks dist with scribe marks.  
 Found down log, A fir 14" in dia bears S40°E 25 lks dist with scribe marks  
 Found fir 14" dia. bears S30°W 53 lks dist. marks not visible but with old blaze scar.

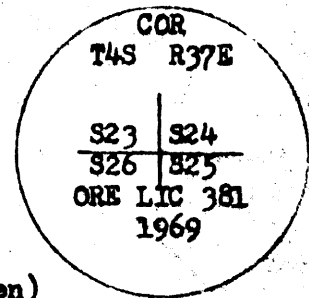
REGISTERED  
**OREGON**  
 LAND SURVEYOR

*James G. Voelz*

MAY 4, 1969  
 JAMES G. VOELZ  
 381

Description of monument and accessories I established to perpetuate the original location of this corner

Set 2" galvanized pipe 30" long with a bronze cap on top and a 8" plate welded to bottom. Pipe set in a 2 1/2" hole and back filled with stone and soil.



I stamped the disk

From the Corner the original bearing trees are;  
 A tamarack 12" in diam bears N 30°W 40 lks dist.  
 A fir 14" in dia bears S40°E 25 lks dist. (now fallen)  
 A fir 14" in dia bears S30°W 53 lks dist.  
 I set two new bearing trees as follows;  
 A fir 5" in dia bears N40°E 16.7 ft. marked with scribe T4S R37E S24 BT.  
 A fir 16" in dia bears S71°E 54.8 ft. dist marked with scribe T4S R37E S25 BT.  
 I set a steel fence post with USFS sign 54-4 and National Forest boundary sign indicating Forest land to the west. I placed USFS bearing tree signs on each of the bearing trees.

Office of.....County Surveyor..... County of.....Union.....  
 State of.....Oregon....., I hereby certify that the within instrument was filed in this office  
 for record on the 14 day of July 1969, at 8:00 o'clock A.M. (signed)  
 .....Co. Surveyor..... by James G. Voelz  
 (COUNTY OFFICIAL) DEPUTY

**UNION COUNTY**  
**SURVEYOR**

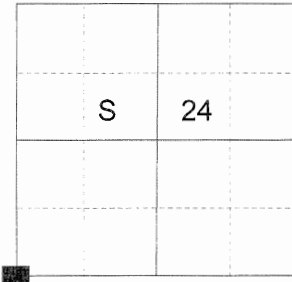
Date Received \_\_\_\_\_  
 Date Filed \_\_\_\_\_  
 By \_\_\_\_\_  
 File No. 597-84R

**CERTIFIED RECORD OF LAND CORNER MONUMENTATION**

**HISTORY OF ORIGINAL CORNER ESTABLISHED:**

Corner originally established by Herman Gradon in GLO Contract NO. 452 Dated June 16, 1882. Surveyor General field notes state:  
Set a post 4 ft. long 4 ins. Square 24 ins. In ground for corner to secs. 23,24,25, and 26 marked T4S S24 on N edge, R37E S25 on S edge S26 on SW and S23 on NW faces, with 2 notches on S and 1 notch on E edge from which:  
A black pine 11" in diam bears N50°E 32 lks dist marked T4S R37E S24 BT  
A fir 14" in diam bears S40°E 25 lks dist marked T4S R37E S25 BT  
A fir 8" in diam bears S30°W 53 lks dist marked T4S R37E S26 BT  
A tamarack 6" diam bears N30°W 40 lks dist marked T4S R37E S23 BT

T 4 S R 37 E R-21



In July of 1969 James G. Voelz places the corner by found accessories. Union County Monumentation Record 507-84R states:  
Found BT's as follows:  
Found standing tamarack in good shape. Bears N30°W 40 lks dist with scribe marks  
Found down log, A fir 14" in diam bears S40°E 25 lks dist with scribe marks (now fallen)  
Found fir 14" diam bears S30°W 53 lks dist. Marks not visible but with old blaze scar.

Set 2" galvanized pipe 30" long with a bronze cap on top and an 8" plate welded to bottom, pipe set in a 20" hole and back filled with stone and soil.  
From which:  
original bearing trees:  
A tamarack 12" diam Bears N30°W 40 lks dist with scribe marks  
A fir 14" diam bears S30°W 53 lks dist with blaze scar  
New bearing trees:  
A fir 5" diam bears N40°E 16.7 ft. dist. marked with scribe T4S R37E S24 BT  
A fir 16" diam bears S71°E 54.8 ft. dist. marked with scribe T4S R37E S25 BT

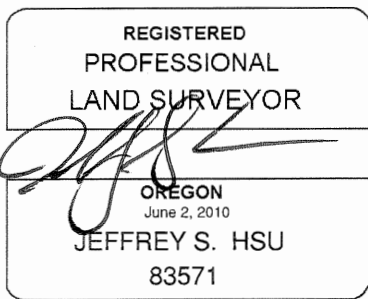
**DESCRIPTION OF CORNER EVIDENCE FOUND:**

2 1/2" iron pipe with 3" brass cap 7" above ground marked as shown  
From which:  
A 23" Douglas Fir bears S71°E 54.8 ft. dist. alive and vigorous with healed blaze.  
A 20" White Fir bears S30°W 35 ft. dist. alive and vigorous with healed blaze.  
A 14" Western Larch bears N30°W 26.4 ft. dist. alive with dead top and healed blaze.  
The North East Bearing Tree was dead and down.

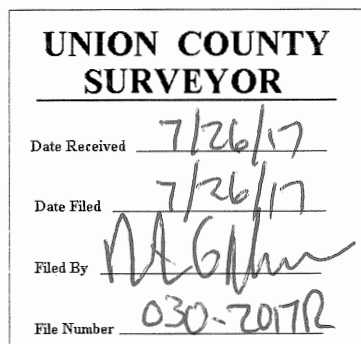
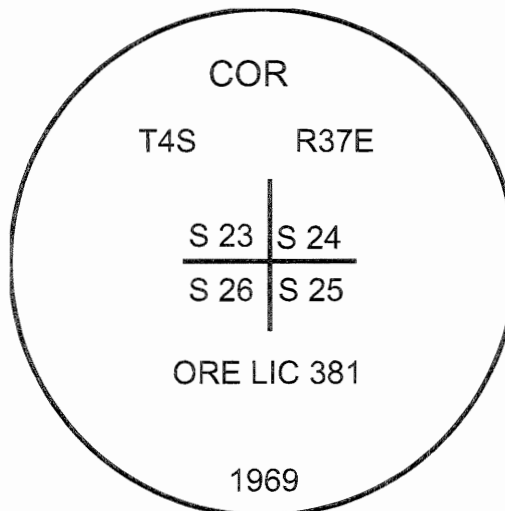
**DESCRIPTION OF MONUMENT AND ACCESSORIES I ESTABLISHED TO PERPETUATE THE ORIGINAL LOCATION OF THIS CORNER:**

From the iron pipe monument,  
NEW BEARING TREES:  
A 7" White fir bears N 40° E, a distance of 31.20 feet dist., marked T4S R37E S24 BT.  
Fence corner of North and East bearing fences falls 12 feet South of monument. Corner falls approx. 100 ft. East of road.

I hereby certify that the corner was perpetuated July 11, 2017.  
Witness: Kyle Tucker



Renewal Date: June 30, 2019



I used a steel tape and magnetic compass in the establishment of the bearing trees. Magnetic declination used was 13° East. Bearings are to a brass washer marked OPLS 83571 in the lower blaze of the new tree. Distance is to a spike set in the root crown of the side of the new tree.