

CERTIFIED RECORD OF LAND CORNER MONUMENTATION

HISTORY OF ORIGINAL CORNER ESTABLISHED:

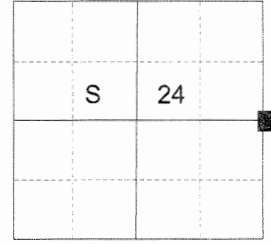
Corner originally established by Herman D. Gradon under GLO contract number 452, dated June 16, 1882. Surveyor General field notes state:

Set a post 3 ft long, 3 ins square, 24 ins in the ground. for 1/4 sec cor. marked 1/4S on W face.

From which:

A black pine 8 ins diam bears S65°W 23 lks dist. marked 1/4S BT.
A pine 44 ins diam bears N50°W 62 lks dist. marked T4S R37E S13 BT.

T 4 S R 37 E P-25



DESCRIPTION OF CORNER EVIDENCE FOUND:

None found

SEE SURVEY NUMBER 032-2017

DESCRIPTION OF MONUMENT AND ACCESSORIES I ESTABLISHED

TO PERPETUATE THE ORIGINAL LOCATION OF THIS CORNER:

At proportionate position, I set a 2 1/2" aluminum pipe with 2 1/2" aluminum cap 27" in the ground marked as shown below.

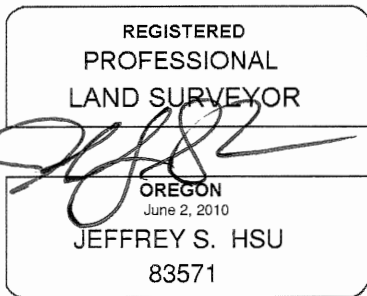
From which:

A 6" Lodgepole Pine bears N43°E, a distance of 19.00 ft dist, marked X BT.
A 5" Lodgepole Pine bears S19°E, a distance of 8.30 ft dist, marked X BT.
A 5" Lodgepole Pine bears S44°W, a distance of 6.35 ft dist, marked 1/4 S24 BT.
A 6" Lodgepole Pine bears N57°W, a distance of 10.15 ft dist, marked 1/4 S24 BT.

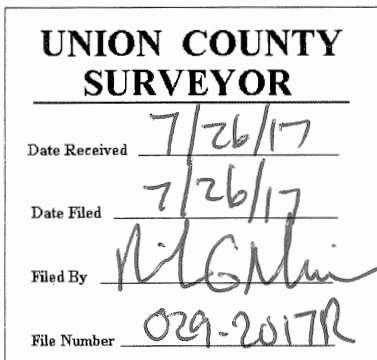
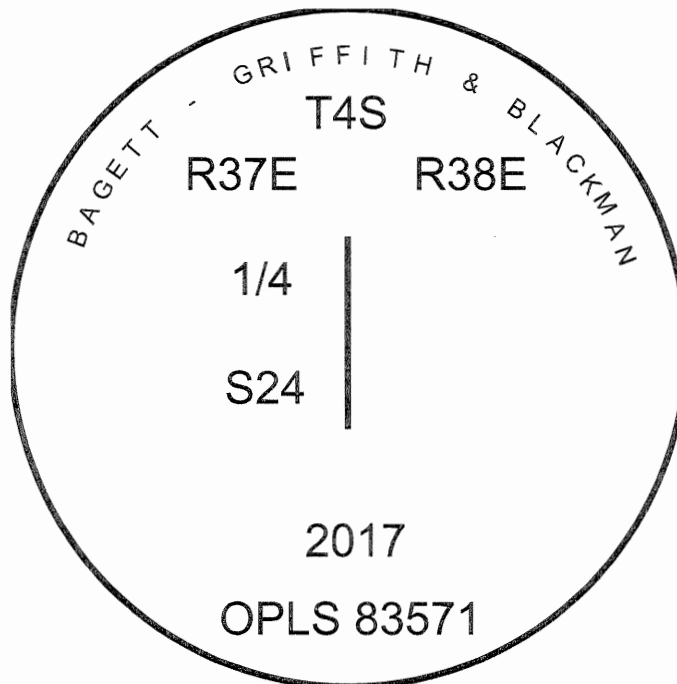
Set steel fencepost approx 0.5 feet N of monument

I hereby certify that the corner was monumented July 18, 2017.

Witness: Kyle Tucker



Renewal Date: June 30, 2019



I used a steel tape and magnetic compass in the establishment of the bearing trees. Magnetic declination used was 13° East. Bearings are to a brass washer marked OPLS 83571 in the lower blaze of the tree. Distance is to a spike set in the root crown of the side of the tree.