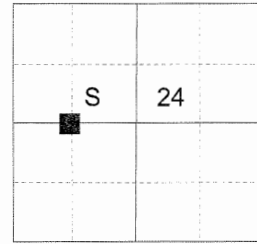


CERTIFIED RECORD OF LAND CORNER MONUMENTATION

**HISTORY OF ORIGINAL CORNER ESTABLISHED:**

Corner not previously established.

T 4 S R 37 E P-22



**DESCRIPTION OF CORNER EVIDENCE FOUND:**

None found

**SEE SURVEY NUMBER 032-2017**

**DESCRIPTION OF MONUMENT AND ACCESSORIES I ESTABLISHED**

**TO PERPETUATE THE ORIGINAL LOCATION OF THIS CORNER:**

At position determined by survey, I set a 5/8" x 30" iron pin 27" in the ground with 2 1/2" aluminum cap marked as shown below.

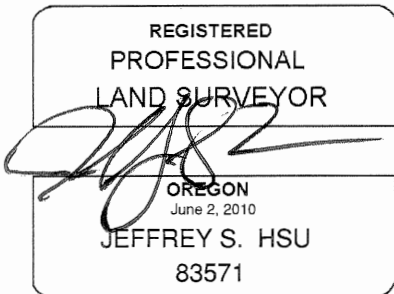
From which:

A 4" Lodgepole pine bears S48°W, a distance of 21.3 ft dist. Marked CW 1/16 S24 BT  
A 6" Lodgepole pine bears N47°W, a distance of 9.85 ft dist. Marked CW 1/16 S24 BT

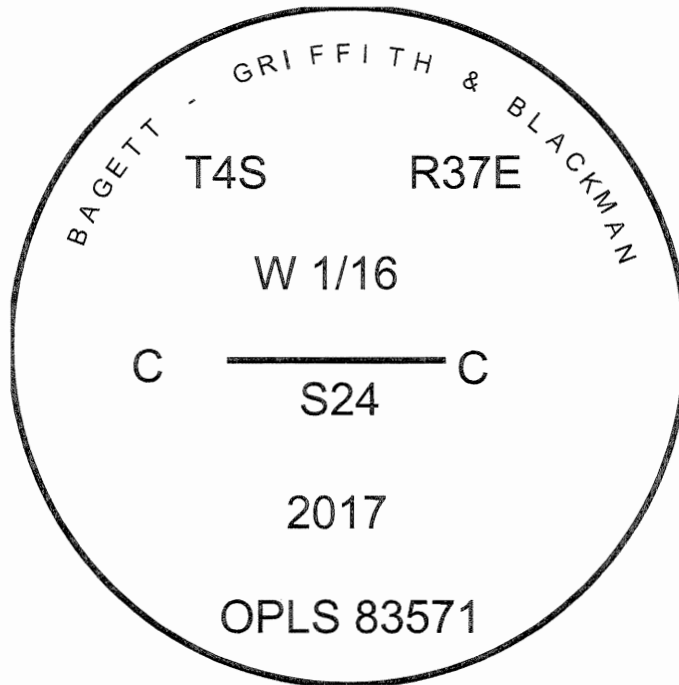
Set steel fencepost approx. 0.5 feet N of monument. Monument falls 13.5 feet East of North/South fence line.

I hereby certify that the corner was monumented July 18, 2017.

Witness: Kyle Tucker



Renewal Date: June 30, 2019



**UNION COUNTY SURVEYOR**

Date Received 7/26/17

Date Filed 7/26/17

Filed By [Signature]

File Number 028-2017R

I used a steel tape and magnetic compass in the establishment of the bearing trees. Magnetic declination used was 13° East. Bearings are to a brass washer marked OPLS 83571 in the lower blaze of the tree. Distance is to a spike set in the root crown of the side of the tree.