

CERTIFIED RECORD OF LAND CORNER MONUMENTATION

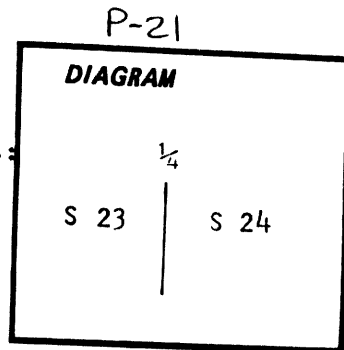
History of original corner establishment:

Corner originally established by Herman D. Gradin under GLO contract number 452, dated June 16, 1882. Official record states:

Set a post 3 ft. long, 3 ins square, 24 ins in the ground for 1/4 sec cor marked 1/4 S on W. face from which:

A pine 20 ins diam bears S50°W 22 lks dist marked 1/4 S BT

A pine 14 ins diam bears N40°E 18 lks dist marked 1/4 S BT



Description of corner evidence found:

NONE

Description of monument and accessories I established to perpetuate the original location of this corner:

At proportionate position, I set a 2" x 30" iron pipe with brass cap marked as shown, 20 inches in the ground, from which;

NEW BTs

A 16 inch diam white fir bears North, 18.2 feet marked 1/4 S24 BT

A 8 inch diameter red fir bears N87°W, 51.9 feet marked 1/4 S23 BT

Set steel fence post approximately 5 feet South with 54-2 and 54-4 sign attached

Raised mound of stone around monument

Painted and signed all BTs

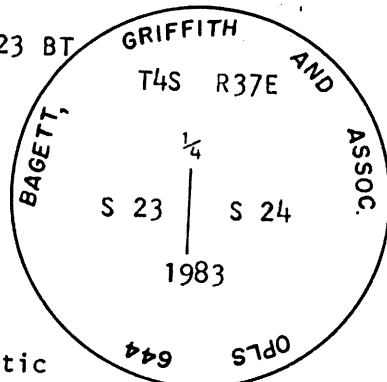
Existing fenceline running North and South is approximately 9.5 feet East of monument

Witnesses: Greg Blackman and Rick Robinson

I used a steel tape and magnetic compass with 20° East magnetic declination in the establishment of these accessories, the distances to the BTs are to the center of the tree. I placed a brass washer marked OPLS 644 by the BT blaze.

Corner set June 1, 1983

See map of Survey number 19-83



REGISTERED PROFESSIONAL LAND SURVEYOR

Handwritten signature of Duane I. Griffith

OREGON
JULY 10, 1964
DUANE I. GRIFFITH
644

Office of..... County of.....
State of....., I hereby certify that the within instrument was filed in this office
for record on the..... day of....., 19.....

..... by
(COUNTY OFFICIAL) (DEPUTY)

UNION COUNTY SURVEYOR

Date Received 6-6-83

Date Filed 6-17-83

By G. LANGLITE DEPUTY

File No. 310-83R

CERTIFIED RECORD OF LAND CORNER MONUMENTATION

HISTORY OF ORIGINAL CORNER ESTABLISHED:

Corner originally established by Herman D. Gradon under GLO contract number 452, dated June 16, 1882. Surveyor General field notes state:

Set a post 3 ft. long, 3 ins square, 24 ins in the ground for 1/4 sec cor marked 1/4S on W. Face

From which:

A pine 20 ins diam bears S50°W 22 lks dist marked 1/4S BT
A pine 14 ins diam bears N40°E 18 lks dist marked 1/4S BT

In Survey Number 19-83, Duane I. Griffith found no original corner evidence and places the corner at proportionate position. Union County Monumentation record 310-83R states:

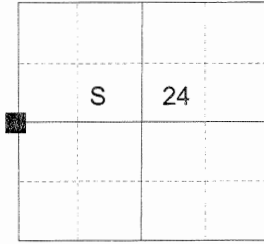
Set a 2" x 30" iron pipe with brass cap marked as shown, 20 inches in the ground with a raised mound of stone around monument,

From which:

A 16 inch diam white fir bears North, 18.2 feet marked 1/4 S24 BT
An 8 inch diam red fir bears N87°W, 51.9 feet marked 1/4 S23 BT

Set steel fence post approx. 5 feet south with 54-2 and 54-4 sign attached
At this time the fenceline running North and South is approx. 9.5 feet East of monument

T 4 S R 37 E P-21



DESCRIPTION OF CORNER EVIDENCE FOUND:

2 1/2" Iron pipe with 2 1/2" Brass cap marked as shown, 5" above ground in collar of stone 1.5 ft diameter,

From which:

A stump hole bears North, 18.0 feet
A 14" Western larch bears S8°E, a distance of 64.10 feet dist. Alive and vigorous with healed blaze. No record of this tree in Union County monumentation records. Bearing tree tag bears initials TRP.
A 15" Douglas fir bears N87°W, a distance of 51.90 feet dist. Alive and vigorous with healed blaze.

DESCRIPTION OF MONUMENT AND ACCESSORIES I ESTABLISHED

TO PERPETUATE THE ORIGINAL LOCATION OF THIS CORNER:

From iron pipe monument:

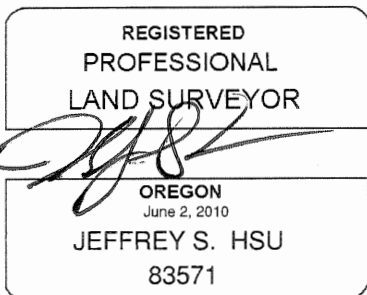
NEW BEARING TREES:

A 14" Douglas fir bears N40°E, 74.85 feet dist. marked 1/4 S24 BT
A 7" Lodgepole pine bears S35°E, 19.40 feet dist. marked 1/4 S24 BT

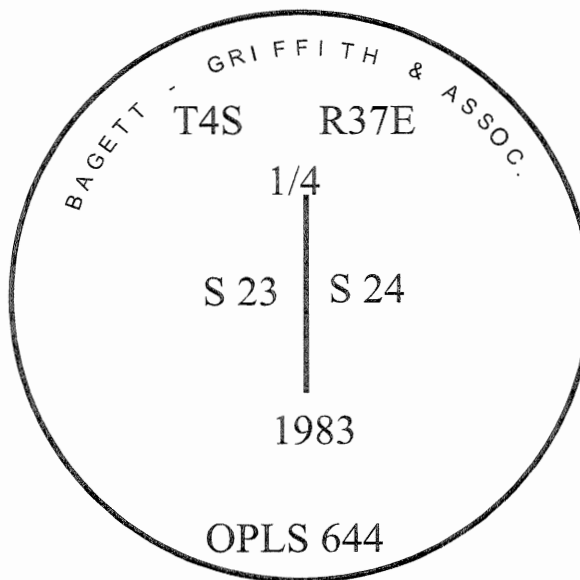
Monument falls in North/South fence line.

I hereby certify that the corner was perpetuated July 11, 2017.

Witness: Kyle Tucker



Renewal Date: June 30, 2019



UNION COUNTY SURVEYOR
Date Received 7/26/17
Date Filed 7/26/17
Filed By M.G. Whinn
File Number 027-2017R

I used a steel tape and magnetic compass in the establishment of the bearing trees. Magnetic declination used was 13° East. Bearings are to a brass washer marked OPLS 83571 in the lower blaze of the new trees. Distance is to a spike set in the root crown of the side of the new trees.