

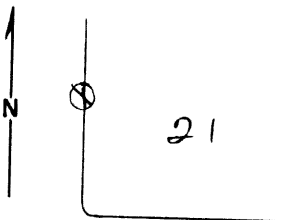
Index File No. P-9
 T 4 S R. 37 E
 Merid. Well

CORNER RECORD (SEARCH)

Tract or Survey No. _____
 Cor. No. _____

R.D. La Grande County Union
 N.F. Yellow-Columbia State (Oregon)

CORNER DIAGRAM



DESCRIBE CORNER MONUMENT FOUND

Small post 4" diam. on ground, poor condition
 Post found between two B.T.'s with visible "S" sciled on it.

DESCRIBE BEARING TREES OR OTHER OFFICIAL ACCESSORIES FOUND

19" D.F. w/ visible B.T. scar facing on an azimuth of 197°, magnetic S 3° E

15" D.F. w/ visible B.T. scar facing on an azimuth of 342° magnetic N 38° W
 No sign of human disturbance

DESCRIBE CORNER LOCATION RELATIVE TO NEAR-BY FEATURES, ALSO HOW TO REACH CORNER

Located in creek bottom of first major fork to the East on Dry Whiskey to the North of Forest boundary.

PHOTO IDENTIFICATION DATA

Photo No. _____
 Filed At. _____
 Object Ident. _____
 Ident. By _____
 Signature _____

PLANE COORDINATE POSITION DATA

State _____ Zone _____
 X _____
 Y _____
 Estab. By _____
 Agency _____

Signature K. Blanchard Title Forest Aid Division _____ Headquarters _____ Date 7-9-68 7100-52 REV. 65 5

UNION COUNTY SURVEYOR

Date Received _____

Date Filed 12-21-87

By G. LANGLITZ, Deputy

File No. 323-87R

P-9

CERTIFIED RECORD OF LAND CORNER MONUMENTATION

P-9

History of original corner establishment:

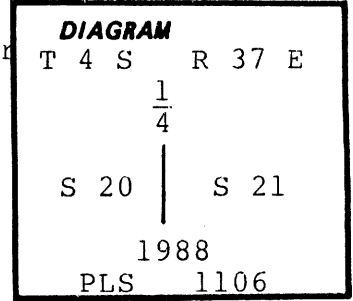
Corner originally established by Herman Gradon under Contract No. 452, dated June 16, 1882.

Surveyor General records state:

Set a post 3 ft long 3 ins square 24 ins in the ground for 1/4 Sec cor marked 1/4 S on W face from which:

A fir 14 ins diam bears N40°E, 11 lks dist marked 1/4S BT.

A fir 12 ins diam bears S10°W, 21 lks dist marked 1/4S BT.



Description of corner evidence found:

Found rotted post remains below ground level from which:

A 15" douglas fir snag, 7' high, brs S10°W, 13.9' to face of blaze & 14.4' to center of tree with healed blaze (OBT).

A 19" uprooted douglas fir with top cut off brs N40°E, about 7.3' to root hole (OBT).

| | |
|------------------------------|---------------------------|
| UNION COUNTY SURVEYOR | |
| Date Received | <u>1-5-89</u> |
| Date Filed | <u>1-6-89</u> |
| By | <u>G. LANGLIT, DEPUTY</u> |
| File No. | <u>30-89R</u> |

Description of monument and accessories established to perpetuate the original location of this corner:

At found corner point...

Set a 2½" aluminum cap on 2½ x 30" aluminum pipe 24" in ground, surrounded with mound of earth and stone & 6' steel fence post North of corner with sign 54-9 attached. Cap marked as shown in corner diagram.

New bearing trees established:

A 15" western larch brs N60½°E, 61.8' scribed 1/4S21 BT.

A 22" western larch brs N74°W, 22.1' scribed 1/4S20 BT.

New BTs have a brass washer stamped PLS 1106 nailed to face of blaze. Attached sign 54-3 & 54-9, painted face of blaze & a 6" red band around each BT.

Compass declination 19° East.

I hereby certify that the above corner monument was properly remonumented to U.S.F.S. standards by me on September 28, 1988.

| |
|---|
| REGISTERED PROFESSIONAL LAND SURVEYOR |
| <i>William R. Wells</i> |
| OREGON JULY 22, 1977 WILLIAM R. WELLS 1106 |

Office of.....County Surveyor.....County of.....Union.....

State of.....Oregon....., I hereby certify that the within instrument was filed in this office

for record on the..... day of....., 19.....

..... by

(COUNTY OFFICIAL)

(DEPUTY)