

CERTIFIED RECORD OF LAND CORNER MONUMENTATION

HISTORY OF ORIGINAL CORNER ESTABLISHED:

Corner originally established by Herman D. Gradon under GLO contract number 452, dated June 16, 1882. Surveyor General field notes state:

Set a basalt stone 15x12x6 ins 10 ins in the ground, for cor. to secs 13 and 24 marked with 3 notches on N and S edges.

From which:

A pine 30 ins diam bears S40°W 32 lks dist. marked T4S R37E S24 BT.
A pine 44 ins diam bears N50°W 62 lks dist. marked T4S R37E S13 BT.

In Survey No. 48-80, Duane Griffith found the two BT's and marked stone in a mound of stone and set a 5/8" x 10" bolt at record distance in the original mound of stone.

T 4 S R 37 E N-25

	S	24	

DESCRIPTION OF CORNER EVIDENCE FOUND:

5/8" bolt with Square head 1"x1", 2" above ground in a mound of stone 1.5' diam. With 18"x12"x6" stone adjacent on East side

From which:

A 28" diam Dead and Down tree bears S47°W 21 ft dist to butt end, with chopped out blaze
A 35" diam stump bears N50°W 40.9 ft dist, badly decaying with no scribe marks visible

SEE SURVEY NUMBER 032-2017

DESCRIPTION OF MONUMENT AND ACCESSORIES I ESTABLISHED

TO PERPETUATE THE ORIGINAL LOCATION OF THIS CORNER:

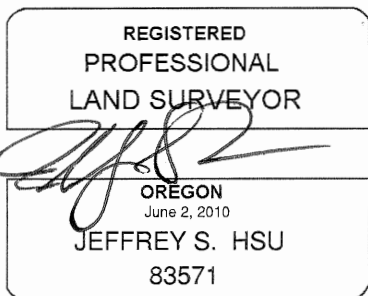
From the 5/8" iron bolt,

NEW BEARING TREES:

A 21" diam Ponderosa Pine bears S76°W, a distance of 10.84 ft dist, marked T4S R37E S24 CC BT. Tree is as a fence corner from which fence bears East and South.
A 20" diam Ponderosa Pine bears N37°W, a distance of 5.5 ft dist, marked T4S R37E S13 CC BT.

I hereby certify that the corner was perpetuated July 13, 2017.

Witness: Kyle Tucker



Renewal Date: June 30, 2019

**UNION COUNTY
SURVEYOR**

Date Received 7/26/17

Date Filed 7/26/17

Filed By [Signature]

File Number 026-2017R

I used a steel tape and magnetic compass in the establishment of the bearing trees. Magnetic declination used was 13° East. Bearings are to a brass washer marked OPLS 83571 in the lower blaze of the tree. Distance is to a spike set in the root crown of the side of the tree.