

**CERTIFIED RECORD OF LAND CORNER MONUMENTATION**

**HISTORY OF ORIGINAL CORNER ESTABLISHED:**

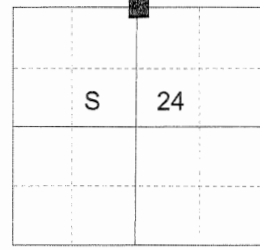
Corner originally established by Herman D. Gradon under GLO contract number 452, dated June 16, 1882. Surveyor General field notes state:

Set a post 3 ft long, 3 ins square, 24 ins in the ground. For 1/4 sec cor. Marked 1/4S on N face.

From which:

A fir 6 ins diam bears N10°E 54 lks dist. Marked 1/4S BT  
A fir 12 ins diam bears South 10 lks dist. Marked 1/4S BT

T 4 S R 37 E N-23



**DESCRIPTION OF CORNER EVIDENCE FOUND:**

None Found

**SEE SURVEY NUMBER 032-2017**

**DESCRIPTION OF MONUMENT AND ACCESSORIES I ESTABLISHED**

**TO PERPETUATE THE ORIGINAL LOCATION OF THIS CORNER:**

At proportionate position, I set a 5/8" x 7" iron pin, drilled into rock 5", with 2 1/2" aluminum cap marked as shown below.

From which:

A 10" Lodgepole Pine bears N73°E, a distance of 24.20 ft dist, marked 1/4 S13 BT.  
A 10" Lodgepole Pine bears S14°E, a distance of 49.45 ft dist, marked 1/4 S24 BT.  
A 9" Western Larch bears S71°W, a distance of 51.80 ft dist, marked 1/4 S24 BT.  
A 6" Douglas Fir bears N67°W, a distance of 52.85 ft dist, marked 1/4 S13 BT.

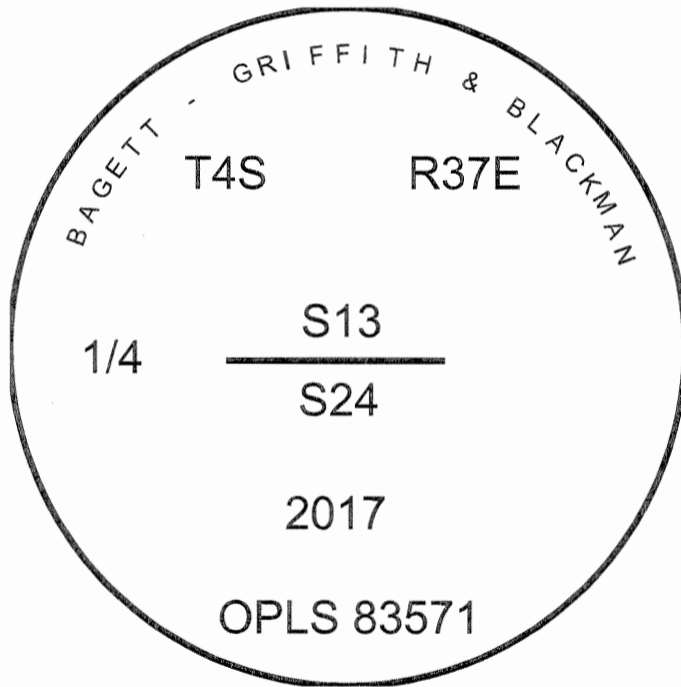
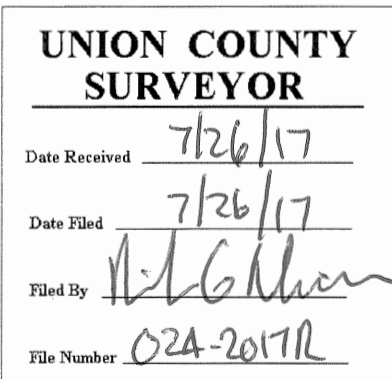
Set steel fencepost approx. 1 ft. South of monument

I hereby certify that the corner was monumented July 18, 2017.

Witness: Kyle Tucker



Renewal Date: June 30, 2019



I used a steel tape and magnetic compass in the establishment of the bearing trees. Magnetic declination used was 13° East. Bearings are to a brass washer marked OPLS 83571 in the lower blaze of the tree. Distance is to a spike set in the root crown of the side of the tree.

# HORIZONTAL CONTROL DATA

## UNION COUNTY, OREGON

### OREGON STATE PLANE, NORTH ZONE (3601)

STA NAME: 2018031

1/4 SECTION CORNER COMMON TO SECTIONS 13 AND 24

TWP. 4 S RGE. 37 E.

GEODETIC COORD: NAD 83(91)

DATE TIED: September 10, 2018

LAT: 45 ° 12 ' 35.96271 " N

SURVEYOR: RICK G. ROBINSON  
OPLS 2219

LONG: 118 ° 7 ' 35.75858 " W

FIRM: BAGETT, GRIFFITH, & BLACKMAN  
2006 ADAMS AVENUE  
LAGRANDE, OR 97850  
(541) 963-6092

SP. COOR: NAD 83(91)

N: 571634.971 INT FT.

E: 8813661.010 INT FT.

TYPE: GPS

THETA: 1 ° 40 ' 59.4565413 "

ORDER: SECOND CLASS: 1

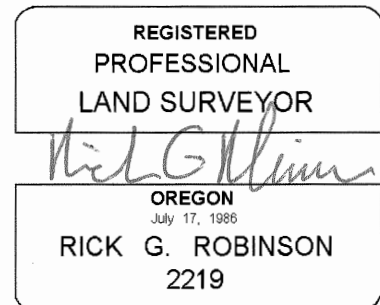
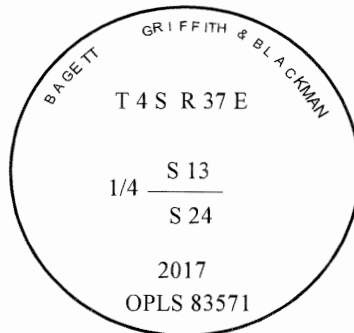
SCALE FACTOR: 0.9998948411

ELEV: 4730.81 US FT.

ELEV: DATUM: NGVD 29

COMMENTS:

2 1/2" aluminum cap on iron pin set  
2" above ground level, with cap marked  
as shown.



Renewal Date: December 31, 2018

1 METER = 3.2808333333... US FEET = 39.37 INCHES

1 METER = 3.280839895 INT'L FEET OR 1 INCH = 2.54 CM

TO CALCULATE ELEVATION FACTOR ( IN THE NORTH AMERICAN CONTINENT)

DIVIDE 20,906,000 BY (20,906,000 + ELLIPSOID ELEV. IN FEET)