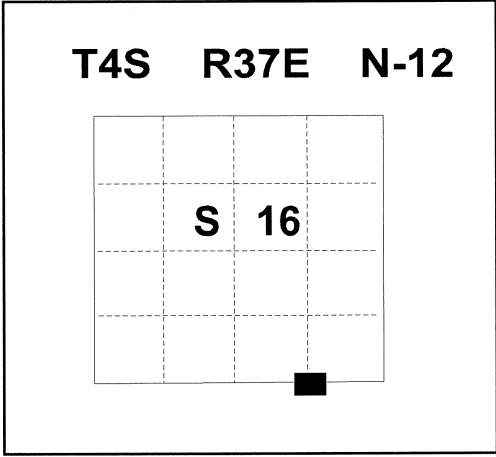


**CERTIFIED RECORD OF LAND CORNER MONUMENTATION**

HISTORY OF ORIGINAL CORNER ESTABLISHMENT:  
Corner not set during original GLO survey.

DESCRIPTION OF CORNER EVIDENCE FOUND:  
None

DESCRIPTION OF MONUMENT AND ACCESSORIES I ESTABLISHED  
TO PERPETUATE THE ORIGINAL LOCATION OF THIS CORNER: I set a 5/8" x 30" rebar with 2 1/2" aluminum cap 29" in the ground, marked as shown see (Union County Survey number 020-2010), from which:



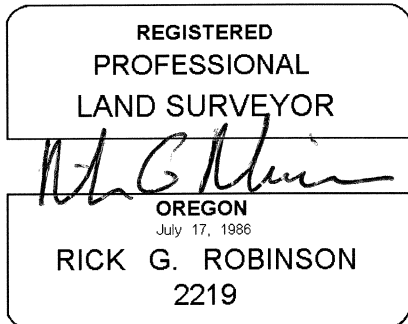
**NEW BEARING OBJECTS:**

A 15 " White Fir bears S 49°E, a distance of 36.77 feet, marked E 1/16 S21 BT.

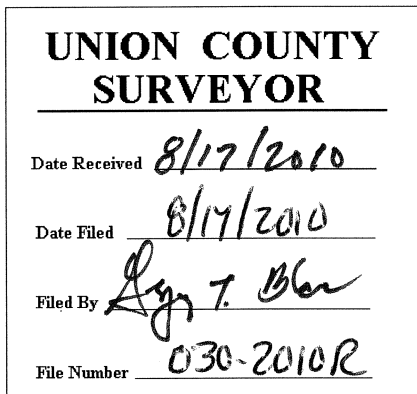
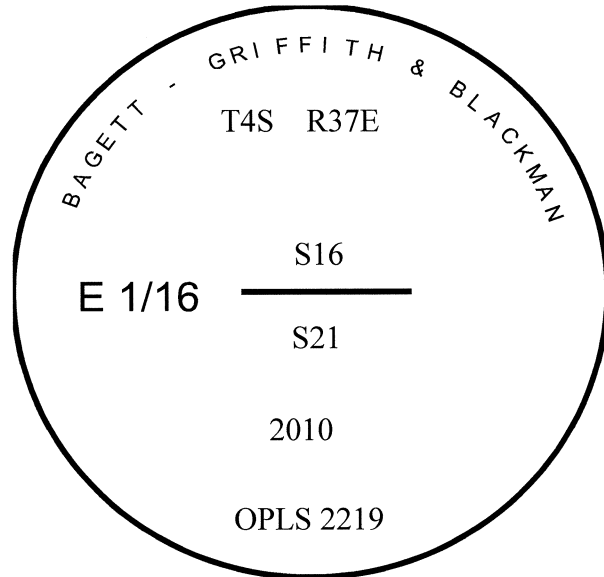
A 7 " Lodge Pole Pine bears N 16°W, a distance of 12.75 feet, marked E 1/16 S16 BT.

Fence Post with U.S.F.S. Boundary sign is 1 foot Northeasterly of monument, and Fence Line running East and West is located approximately 2.50 feet North of monument.

I hereby certify that the corner was monumented on August 11, 2010  
Witness: Greg Blackman Jr. & Jeff Hsu



Renewal Date: December 31, 2010



I used a steel tape and magnetic compass in the establishment of the new accessories. I used 18° East declination, the distances are to a 60d spike driven into the root crown at the right side of the bearing trees. Attached brass washer marked OPLS 2219 to BT blaze.