

**CERTIFIED RECORD OF LAND CORNER MONUMENTATION**

**HISTORY OF ORIGINAL CORNER ESTABLISHMENT:**

This corner was originally established by Herman D. Gradon, U.S. Deputy Surveyor, under Contract No. 452, dated June 16, 1882. The original notes state that at the corner a 15"x9"x6" basalt stone, marked with 3 notches on South and 5 notches on East edges, was set 10 inches in the ground from which;  
A pine 20" dia. bears N 45°E 24 lks. dist., marked T4S R37E S17 BT.

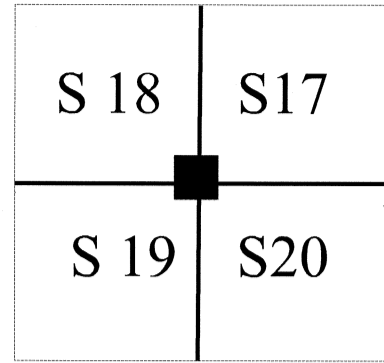
A pine 18" dia. bears S 40°E 45 lks. dist., marked T4S R37E S20 BT.

A pine 30" dia. bears S 15°W 40 lks. dist., marked T4S R37E S19 BT.

A pine 5" dia. bears N 50°W 12 lks. dist., marked T4S R37E S18 BT.

In 1969, this corner was recovered and remonumented by LS 381. See recorded corner certificate No. 503-84R.

T 4 S R 37 E N - 05



**DESCRIPTION OF CORNER EVIDENCE FOUND:**

Found 3" Brass cap on a 2 1/2" galvanized pipe protruding 12" from a stone mound from which;  
A 22" Ponderosa Pine that bears N 52°W, a distance of 8.30 feet, with healed blaze. (Original)

A 14" Ponderosa Pine that bears S 69 1/2°W, a distance of 50.00 feet, visible scribes face partially healed. (Rehab tree taken by William R. Wells 1989)

A 19" dead standing Ponderosa Pine that bears N 45°E, a distance of 15.7 feet, with scribing visible on a partly healed blaze. (Original)

A 27" dead on the ground Ponderosa Pine, bears S 45°E, a distance of 30.1 ft. Bearing tree signs visible and partial healed Blaze visible.

**DESCRIPTION OF MONUMENT AND ACCESSORIES I ESTABLISHED TO PERPETUATE THE ORIGINAL LOCATION OF THIS CORNER:**

From the found brass cap monument:

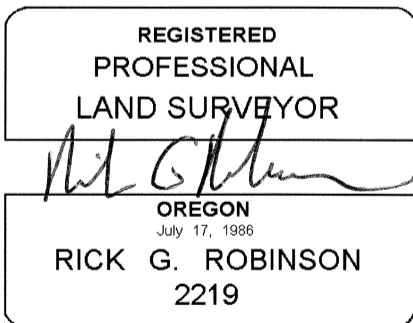
**NEW BEARING TREES:**

A 9" Ponderosa Pine bears North 46° East, 32.10 feet, marked T4S R37E S17 BT.

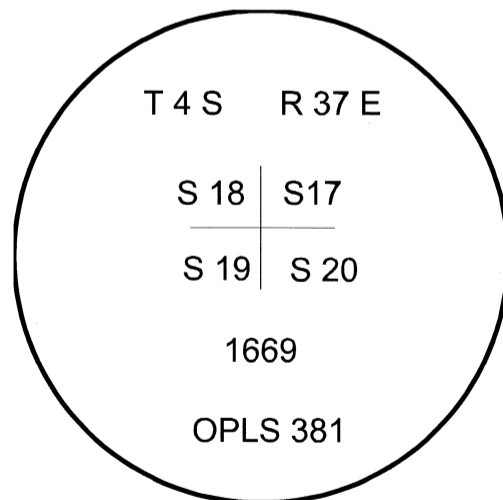
A 8" Ponderosa Pine bears South 35°East, 32.60 feet, marked "X" BT.

I hereby certify that the above corner accessories were taken as hereon described on May 4, 2009.

Witness: Gregory T. Blackman, Jr.



Renewal Date: December 31, 2010



**UNION COUNTY SURVEYOR**  
Date Received 6/1/09  
Date Filed 6/1/09  
Filed By Gregory T. Blackman  
File Number 017-2009R

I used a steel tape and magnetic compass in the establishment of the new accessories. I use 18° East declination. The distances are to a 60d spike driven into the right side of the root crown of the bearing trees. Attached brass washer marked OPLS 2219 to BT Blaze.

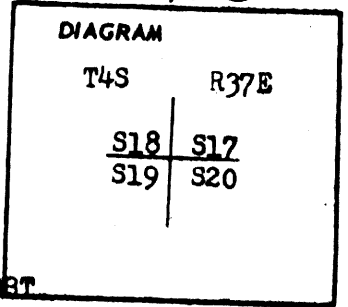
12-69A

CERTIFIED RECORD OF LAND CORNER MONUMENTATION

39

History of original corner establishment:

The original survey made by contract No 452 dated June 16 1882. The original notes read.  
 Set a basalt stone 15x9x6 ins. 10 ins. in the ground for cor to secs 17,18,19 and 20 marked with 3 notches on S and 5 notches and E edges from which;  
 A pine 20" in diam bears N45°E 24 lks dist. marked R4S R37E S17 BT.  
 A pine 18" in diam bears S40°E 45 lks dist. marked T4S R37E S20BT  
 A pine 30" in diam bears S15°W 40 lks dist marked R4S R37E S19BT  
 A pine 5" in diam bears N50°W 12 lks dist. marked R4S R37E S18 BT.



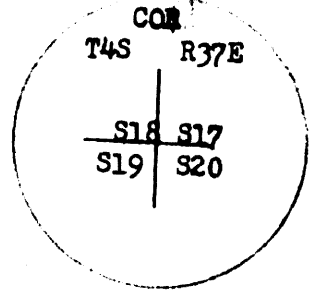
Description of corner evidence found:

The corner stone could not be indentified.  
 A pine 20" in diam bears N45°E 24 lks. dist with scribe marks visible.  
 A pine 26" in diam bears S40°E 45 lks. dist with scribe marks visible.  
 A pine 30" in diam ( now standing but dead) bears S15°W 40 lks dist with scribe visible.

Description of monument and accessories I established to perpetuate the original location of this corner

Set a 2" galvanized pipe 30" long 12" in the ground with bronze cap on top and 8" plate welded to bottom. Backfilled the hole with stone and soil and raised a stone and earth monument.

I stamped the disk



From the corner the original trees are;  
 A blazed pine 20" in diam bears N45°E 24 lks dist.  
 A pine 26" in diam bears S40°E 45 lks dist with scribe marks visible  
 A pine 30" in diam bears S15°W 40 lks dist  
 I also established two new bear trees as follows;  
 A fir 10" in diam bears S24°W 38 ft. dist marked with scribe T4S R37E S19BT.  
 A pine 10" in diam bears N52°W 7.5 ft dist marked with scribe T4S R37E S18 BT.  
 I set steel fence post with USFS sign 54-4 and National Forest Boundary sign indicating National forest land to south. USFS bearing tree signs were placed on each of the bearing trees.

Office of.....County..surveyor..... County of..... Union

State of..... Oregon....., I hereby certify that the within instrument was filed in this office for record on the 16 day of July, 1969, at 9:00 o'clock A.M. (signed)

County Surveyor (COUNTY OFFICIAL)

by *James L. [Signature]* (DEPUTY)

UNION COUNTY SURVEYOR

Date Received \_\_\_\_\_

Date Filed \_\_\_\_\_

By \_\_\_\_\_

File No. 503-84 R

**CERTIFIED RECORD OF LAND CORNER MONUMENTATION**

T 4S, R 37E., W.M.

Corner Code No. N-5

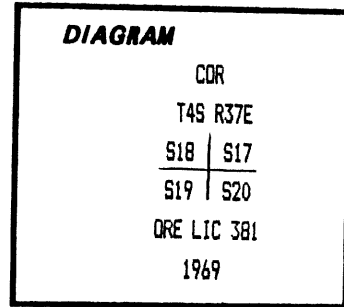
Note: Monument marked as shown below

**History of original corner establishment:**

This corner was originally established by Herman D. Graddon, U.S. Deputy Surveyor, under Contract No. 452, dated June 16, 1882. The original notes state that at the corner a 15 by 9 by 6 inch basalt stone, marked with 3 notches on South and 5 notches on East edges, was set 10 inches in the ground from which:

- A pine 20 ins diam. bears N45°E 24 lks dist., marked T4S R37E S17 BT.
- A pine 18 ins diam. bears S40°E 45 lks dist., marked T4S R37E S20 BT.
- A pine 30 ins diam. bears S15°W 40 lks dist., marked T4S R37E S19 BT.
- A pine 5 ins diam. bears N50°W 12 lks dist., marked T4S R37E S18 BT.

In 1969, this corner was recovered and remonumented by LS 381. See recorded corner certificate No. 503-84R.



Corner No.  
Compass Declination: 19.0°E

**Description of corner evidence found:**

Found a 3" brass cap on a 2 1/2" galv. iron pipe protruding 12" from a stone mound from which:

- A 19" ponderosa pine bears N45°E 15.7' with scribing visible on a partly healed blaze. (Original bearing tree).
- A 27" ponderosa pine bears S45°E 30.1' with scribing visible on a partly healed blaze. (Original bearing tree).
- A 23" dead standing ponderosa pine bears S17°W 27.3' with scribing visible on a partly healed blaze. (Original bearing tree).
- A 13" ponderosa pine bears N52°W 8.3' with healed original blaze. (Original bearing tree). LS 381 had reblazed and scribed this tree in 1969.
- A bug damaged 14" douglas fir bears S28 1/2°W 38.2' with scribes visible on a partly healed double blaze. (Bearing tree by LS 381 in 1969).

**Description of monument and accessories I established to perpetuate the original location of this corner:**

This monument was maintained by mounding with more earth and stone. Marked one new bearing tree:

A 8" ponderosa pine bears S69 1/2°W 50.0' scribed T4S R37E S19 BT.

New bearing tree has a brass washer stamped PLS 1106 nailed to face of blaze. Attached sign 54-3 and 54-9 and painted face of blaze and a 6" red band around each bearing tree. Set steel fence posts east and west of corner and attached sign 54-2 to both posts and sign 54-9 to one post.

UNION COUNTY SURVEYOR	
Date Received	<u>1-5-89</u>
Date Filed	<u>1-6-89</u>
By	<u>G. LANGLITZ DEPUTY</u>
File No.	<u>22-89 R</u>

REGISTERED PROFESSIONAL LAND SURVEYOR	
<i>William R. Wells</i>	
OREGON JULY 22, 1977 WILLIAM R. WELLS 1106	

Office of..... County of.....

State of....., I hereby certify that the within instrument was filed in this office for record on the..... day of....., 19.....

..... by .....  
(COUNTY OFFICIAL) (DEPUTY)

# HORIZONTAL CONTROL DATA

## UNION COUNTY, OREGON

### OREGON STATE PLANE, NORTH ZONE (3601)

STA NAME: 200922

CORNER COMMON TO SECTIONS 17, 18, 19 AND 20

TWP. 4 S RGE. 37 E.

GEODETIC COORD: NAD 83(91)

DATE TIED: May 5, 2009

LAT: 45 ° 12 ' 38.24165 " N

SURVEYOR: RICK ROBINSON  
OPLS 2219

LONG: 118 ° 13 ' 7.74369 " W

FIRM: BAGETT, GRIFFITH, & BLACKMAN  
2006 ADAMS AVENUE  
LAGRANDE, OR 97850  
(541) 963-6092

SP. COOR: NAD 83(91)

N: 571181.169 INT FT.

E: 8789898.824 INT FT.

TYPE: GPS

THETA: 1 ° 37' 4.0 "

ORDER: SECOND CLASS: 1

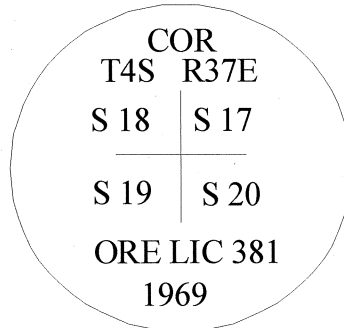
SCALE FACTOR: 0.9998948491

ELEV: 4839.2114 US FT.

ELEV: DATUM: NGVD 29

**COMMENTS:**

Corner is a 3" brass cap monument marked  
as shown in mound of stone



REGISTERED  
PROFESSIONAL  
LAND SURVEYOR

*Rick G. Robinson*  
OREGON  
July 17, 1986  
RICK G. ROBINSON  
2219

1 METER = 3.2808333333... US FEET = 39.37 INCHES

1 METER = 3.280839895 INT'L FEET OR 1 INCH = 2.54 CM

TO CALCULATE ELEVATION FACTOR ( IN THE NORTH AMERICAN CONTINENT)

DIVIDE 20,906,000 BY (20,906,000 + ELLIPSOID ELEV. IN FEET)

Renewal Date: December 31, 2010