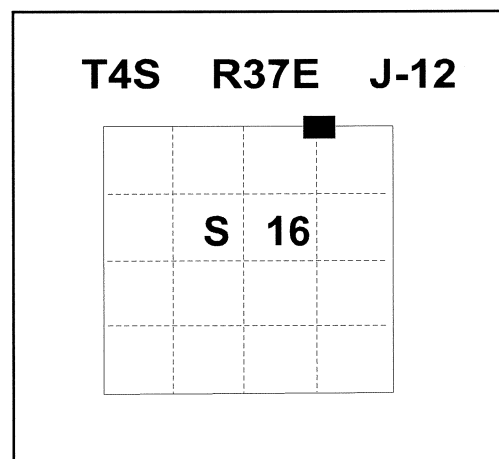


**CERTIFIED RECORD OF LAND CORNER MONUMENTATION**

HISTORY OF ORIGINAL CORNER ESTABLISHMENT:  
 Corner not set during original GLO survey.

DESCRIPTION OF CORNER EVIDENCE FOUND:  
 None

DESCRIPTION OF MONUMENT AND ACCESSORIES I ESTABLISHED  
 TO PERPETUATE THE ORIGINAL LOCATION OF THIS CORNER: I set a 5/8" x 30" rebar  
 with 2 1/2" aluminum cap 26" in the ground, marked as shown see (Union  
 County Survey number 020-2010), from which:



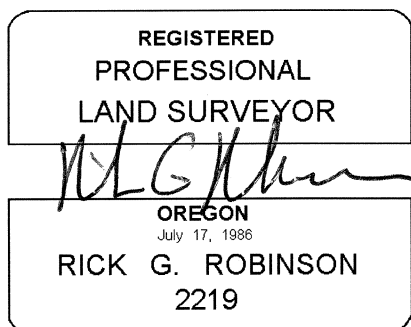
NEW BEARING OBJECTS:

A 10 " Ponderosa Pine bears N 42°E, a distance of 32.14 feet, marked E 1/16 S9 BT.

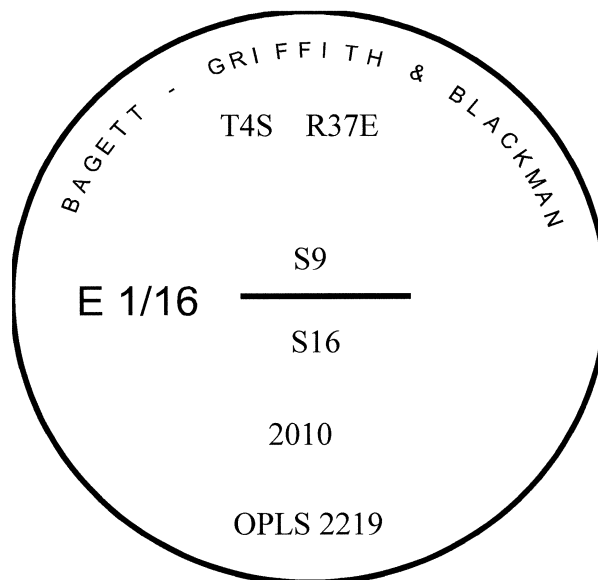
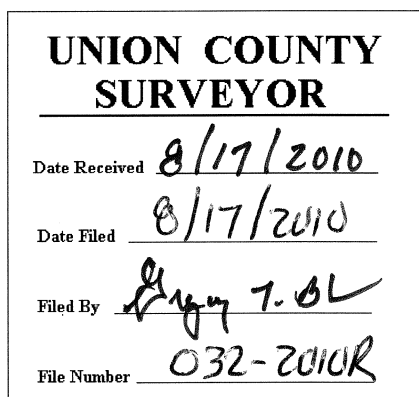
A 12 " Ponderosa Pine bears S 40°E, a distance of 20.84 feet, marked E 1/16 S16 BT.

I hereby certify that the corner was monumented on August 10, 2010

Witness: Greg Blackman Jr. & Jeff Hsu



Renewal Date: December 31, 2010



I used a steel tape and magnetic compass in the establishment of the new accessories. I used 18° East declination, the distances are to a 60d spike driven into the root crown at the right side of the bearing trees. Attached brass washer marked OPLS 2219 to BT blaze.