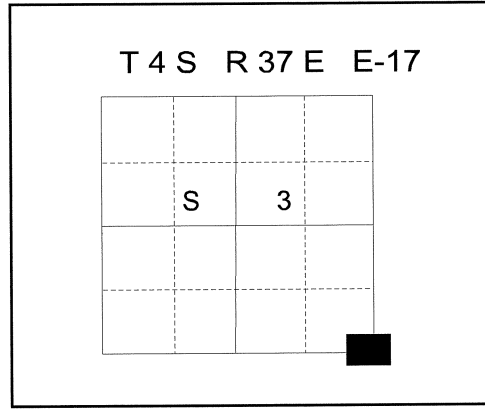


RTIFIED RECORD OF LAND CORNER MONUMEN TION

HISTORY OF ORIGINAL CORNER ESTABLISHMENT:

Corner originally established by Herman D. Gradon under GLO contract Number 452, dated June 6, 1882. Surveyor General record states: Set a basalt stone 12x12x6", 8 ins. in the ground for cor. To secs 2, 3, 10 + 11, marked with 5 notches on S and 2 notches on E edges and raised a mound of stone alongside.

Stone previously found by Duane Griffith and Norman Paullus, Jr. Circa 1977 as part of the La Grande Watershed pipeline retracement. The corner was not monumented at that time.



DESCRIPTION OF CORNER EVIDENCE FOUND:

I contacted Mr. Paullus, and he directed me to the stone and mound. Found a stone of call size, but found no discernable marks on the stone. Mr. Paullus testified that this was indeed the stone found in the retracement work done circa 1977 and that they did find marks on the stone at that time.

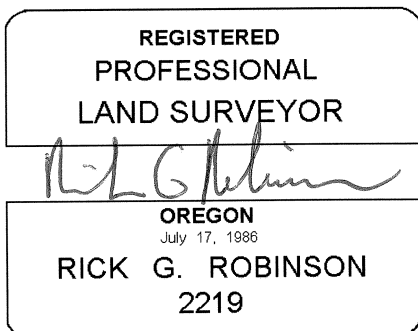
See Survey Number 013-2009

DESCRIPTION OF MONUMENT AND ACCESSORIES I ESTABLISHED TO PERPETUATE THE ORIGINAL LOCATION OF THIS CORNER:

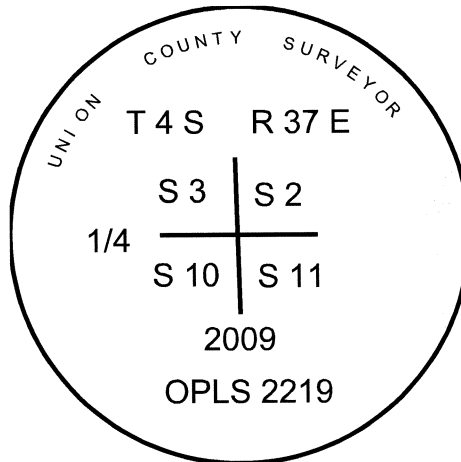
At the position of the found stone, I set a 2 1/2" x 30" Aluminum pipe, with aluminum cap marked as shown, 24" in the ground, with mound of stone, 2 ft. base to top of cap, from which:

- A 5/8"x30" iron pin with 2" aluminum cap bears North 32°05' East, a distance of 31.31 feet, marked NE RP ,
- A 5/8"x30" iron pin with 2" aluminum cap bears South 57°34' East, a distance of 26.63 feet, marked SE RP ,
- A 5/8"x30" iron pin with 2" aluminum cap bears South 39°14' West, a distance of 28.97 feet, marked SW RP ,
- A 5/8"x30" iron pin with 2" aluminum cap bears North 61°57' West, a distance of 58.47 feet, marked NW RP ,

I hereby certify that the corner was perpetuated on June 9, 2009
 Witness: Norman Paullus, Jr. Gregory T. Blackman, Jr.



Renewal Date: December 31, 2010



UNION COUNTY SURVEYOR

Date Received 6/15/09

Date Filed 6/15/09

Filed By Gregory T. Blackman

File Number 019-2009R

I used a Leica System 1200 GPS unit to measure the new accessories. The distances are to the center of the aluminum caps. The basis of bearing is the same as that of survey number 013-2009

HORIZONTAL CONTROL DATA

UNION COUNTY, OREGON

OREGON STATE PLANE, NORTH ZONE (3601)

STA NAME: 200925

CORNER COMMON TO SECTIONS 2, 3, 10 AND 11

TWP. 4 S RGE. 37 E.

GEODETIC COORD: NAD 83(91)

DATE TIED: June 9, 2009

LAT: 45 ° 14 ' 21.88653 " N

SURVEYOR: RICK ROBINSON
OPLS 2219

LONG: 118 ° 9 ' 23.50180 " W

FIRM: BAGETT, GRIFFITH, & BLACKMAN
2006 ADAMS AVENUE
LAGRANDE, OR 97850
(541) 963-6092

SP. COOR: NAD 83(91)

N: 582132.527 INT FT.

E: 8805640.259 INT FT.

TYPE: GPS

THETA: 1 ° 39' 43.0 "

ORDER: SECOND CLASS: 1

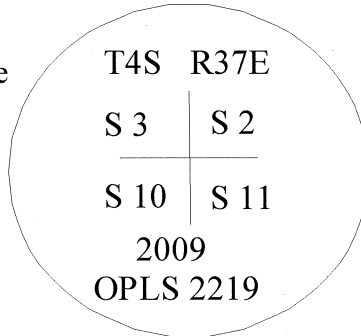
SCALE FACTOR: 0.9998953413

ELEV: 4091.7156 US FT.

ELEV: DATUM: NGVD 29

COMMENTS:

Corner is a 2 1/2" aluminum cap monument marke
as shown in mound of stone



REGISTERED
PROFESSIONAL
LAND SURVEYOR

OREGON
July 17, 1986
RICK G. ROBINSON
2219

Renewal Date: December 31, 2010

1 METER = 3.2808333333... US FEET = 39.37 INCHES

1 METER = 3.280839895 INT'L FEET OR 1 INCH = 2.54 CM

TO CALCULATE ELEVATION FACTOR (IN THE NORTH AMERICAN CONTINENT)

DIVIDE 20,906,000 BY (20,906,000 + ELLIPSOID ELEV. IN FEET)