

CERTIFIED RECORD OF LAND CORNER MONUMENTATION

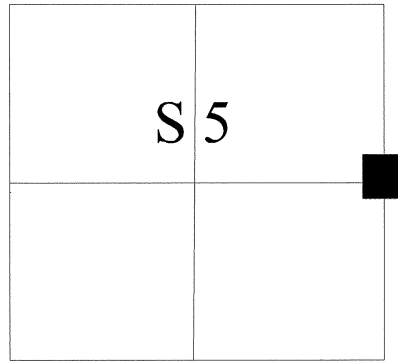
HISTORY OF ORIGINAL CORNER ESTABLISHMENT:

Corner originally established by Hermon D. Gradon under GLO contract number 452, dated June 6, 1882 Surveyor General record states:

Set Basalt stone 14x7x6 inches, 9" in the ground, for 1/4 Sec. Corner marked 1/4 on West face, from which A Pine 8" dia. bears S65°E, 35 lks and Pine 18" dia. bears S65°W, 92 lks. Both marked 1/4 S.B.T.

Under survey 032-2004 Steve Haddock set a 2 1/4" Brass cap on a 1 3/8" galvanized iron pipe with a collar of stone at the proportionate point. After the completion of Survey 032-2004, two additional original corner monuments were found. Mr. Haddock obliterated the scribing from two of his original bearing trees set in Section 4 and remarked those faces with and "X". He cut the cap off the Brass cap monument leaving the pipe.

T 4 S R 37 E C - 09



DESCRIPTION OF CORNER EVIDENCE FOUND:

2 1/4" Brass cap on pipe, cap marked as shown.

A 18" Ponderosa Pine bears North 46 08'12"° East, 79.59 feet, Live and Vigorous with scribes visible.

A 16" Ponderosa Pine stump bears South 74°22'08" East, 60.90 feet, bottom blaze visible.

A 12" Ponderosa Pine bears South 78°14'00" West, 130.56 feet, blown down with scribes visible.

A 12" Ponderosa Pine 6' high stump bears South 88°47'53" West, 125.83 feet, scribes visible.

See Survey No. 032-2004

DESCRIPTION OF MONUMENT AND ACCESSORIES I ESTABLISHED TO PERPETUATE THE ORIGINAL LOCATION OF THIS CORNER:

From the found brass cap monument:

NEW BEARING TREES:

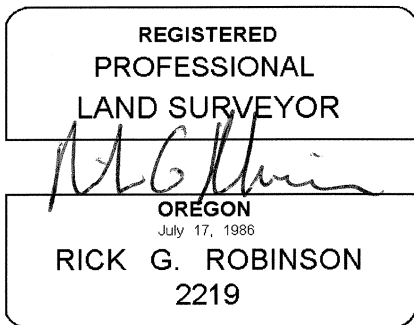
A 10" Ponderosa Pine bears South 59° East, 84.21 feet, marked 1/4 S4 BT.

A 13" Ponderosa Pine bears South 63° West, 100.50 feet, marked 1/4 S5 BT.

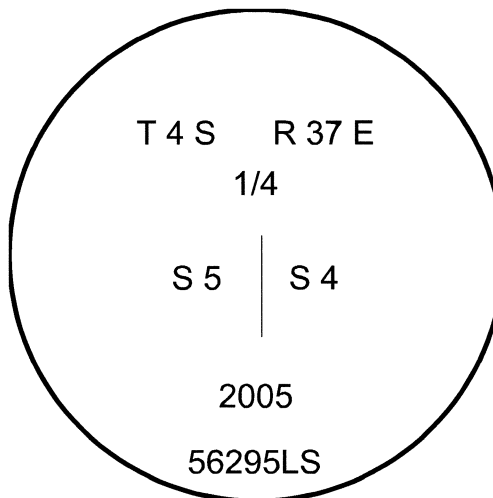
A 6" Ponderosa Pine bears North 39° West, 53.44 feet, marked "X" BT.

I hereby certify that the above accessories were taken as hereon described on May 4, 2009.

Witness: Gregory T. Blackman, Jr.



Renewal Date: December 31, 2010



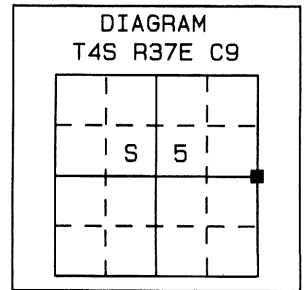
UNION COUNTY SURVEYOR
Date Received 6/1/09
Date Filed 6/1/09
Filed By [Signature]
File Number 010-2009R

I used a steel tape and magnetic compass in the establishm the new accessories. I use 18° East declination. The distar are to a 60d spike driven into the right side of the root of the bearing trees. Attached brass washer marked OPLS 22 BT Blaze.

CERTIFIED RECORD OF LAND CORNER MONUMENTATION

HISTORY OF ORIGINAL CORNER ESTABLISHMENT:

The corner was originally established by Herman D. Gradon under GLO contract No. 452 dated June 6, 1882. The Surveyor General Record states:
 Set a basalt stone 14x7x6 ins 9 ins in the ground, for 1/4 sec cor, marked 1/4 on W. Face, from which
 A pine 8 ins diam bears S65°E, 35 lks dist., marked 1/4 S.B.T.
 A pine 18 ins diam bears S65°W, 92 lks dist., marked 1/4 S.B.T.



I found no subsequent record of monumentation in the Union County survey records.

DESCRIPTION OF CORNER EVIDENCE FOUND:

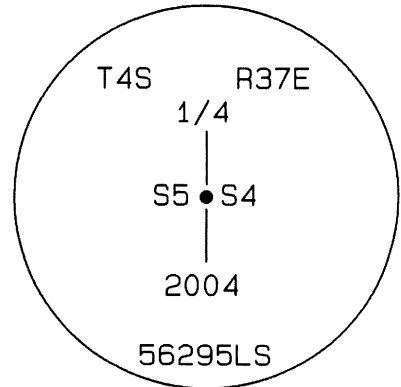
None.

DESCRIPTION OF MONUMENT AND ACCESSORIES I ESTABLISHED TO PERPETUATE THE ORIGINAL LOCATION OF THIS CORNER:

At the proportionate point I set a 2 1/4" Brass Cap on a 1 3/8" x 30" galvanized iron pipe galvanized iron pipe 26" in the ground. I set a 24" collar of stone around it. I stamped the cap as shown below.

I marked four bearing trees. Each bearing tree has a 1 1/2" brass washer fastened between the letters B and T with a 2" PK nail. The washer is stamped WTS and 56295 LS. Measurements were taken to the dent in the head of the nail with a Trimble 5601 electronic total station. Bearings are based on the survey control for County Survey No. 032-2004.

- A 12" Ponderosa Pine bears N54°45'39"W, 10.43', scribed 1/4 S5 BT.
- A 21" Ponderosa Pine bears N58°04'25"E, 40.97', scribed 1/4 S4 BT.
- An 11" Ponderosa Pine bears S36°22'34"E, 50.29', scribed 1/4 S4 BT.
- An 11" Ponderosa Pine bears S30°07'14"W, 20.77', scribed 1/4 S5 BT.



I hereby certify that the above corner point was reestablished as hereon described on September 1, 2004.

Witness: David Haddock

**REGISTERED
PROFESSIONAL
LAND SURVEYOR**

Stephen K. Haddock

OREGON
JULY 9, 2001
STEPHEN K. HADDOCK
56295LS

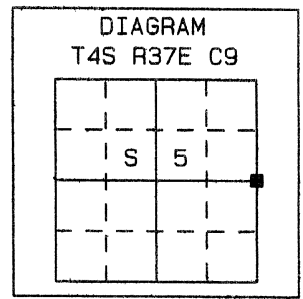
RENEWAL DATE 6-30-05

UNION COUNTY SURVEYOR	
Date Received	<u>12/18/04</u>
Date Filed	<u>12/10/04</u>
By	<u>R. ROBINSON, DEPUTY</u>
No.	<u>079-2004R</u>

CERTIFIED RECORD OF LAND CORNER MONUMENTATION

HISTORY OF ORIGINAL CORNER ESTABLISHMENT:

The corner was originally established by Herman D. Gradon under GLO contract No. 452 dated June 6, 1882. The Surveyor General Record states: Set a basalt stone 14x7x6 ins 9 ins in the ground, for 1/4 sec cor, marked 1/4 on W. Face, from which
 A pine 8 ins diam bears S65°E, 35 lks dist., marked 1/4 S.B.T.
 A pine 18 ins diam bears S65°W, 92 lks dist., marked 1/4 S.B.T.



Under survey 032-2004 I set a 2 1/4" brass cap on a 1 3/8" galvanized iron pipe with a collar of stone at the proportionate point. I stamped the cap as shown under evidence found.

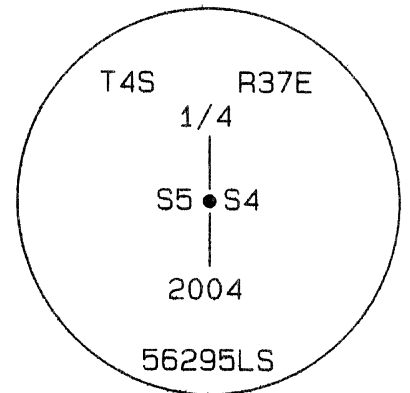
I marked four bearing trees. Each bearing tree has a 1 1/2" brass washer fastened between the letters B and T with a 2" PK nail. The washer is stamped WTS and 56295 LS.

- A 12" Ponderosa Pine bears N54°45'39"W, 10.43', scribed 1/4 S5 BT.
- A 21" Ponderosa Pine bears N58°04'25"E, 40.97', scribed 1/4 S4 BT.
- An 11" Pondersa Pine bears S36°22'34"E, 50.29', scribed 1/4 S4 BT.
- An 11" Pondersa Pine bears S30°07'14"W, 20.77', scribed 1/4 S5 BT.

I found no subsequent record of monumentation in the Union County survey records.

DESCRIPTION OF CORNER EVIDENCE FOUND:

I found the brass cap and the bearing trees as described in good condition. No original evidence was found.



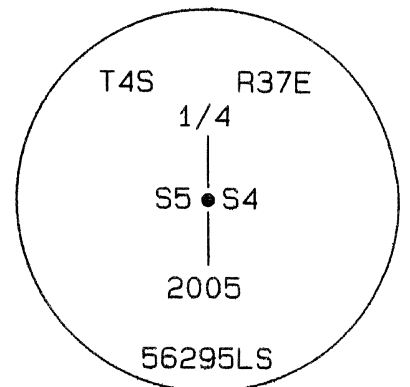
DESCRIPTION OF MONUMENT AND ACCESSORIES I ESTABLISHED TO PERPETUATE THE ORIGINAL LOCATION OF THIS CORNER:

Since the completion of my survey 032-2004, two additional original corner monuments have been found. I obliterated the scribing from the two bearing trees I previously set in Section 4 and remarked those faces with and "X". I cut the cap off of the previous monument I set but left the pipe in place.

I recalculated the correct corner location using the two additional original corner positions and at the proportionate point I set a 2 1/4" Brass Cap on a 1 3/8" x 30" galvanized iron pipe 30" in the ground to bedrock. I stamped the brass cap as shown below.

I marked two new bearing trees and held the two previous bearing trees from Section 5. Each bearing tree has a 1 1/2" brass washer fastened between the letters B and T with a 2" PK nail. The washer is stamped WTS and 56295 LS. Measurements were taken to the dent in the head of the nail with a Trimble 5601 electronic total station. Bearings are based on the survey control for County Survey No. 032-2004. The bearing trees are now described as follows:

- A 12" Ponderosa Pine bears S88°47'53"W, 125.83', scribed 1/4 S5 BT.
 - A 17" Ponderosa Pine bears N46°08'12"E, 79.59', scribed 1/4 S4 BT.
 - A 16" Pondersa Pine bears S74°22'03"E, 60.90', scribed 1/4 S4 BT.
 - An 11" Pondersa Pine bears S78°14'00"W, 130.56', scribed 1/4 S5 BT.
- The pipe I previously set bears S85°36'45"W, 117.69'.



I hereby certify that the above corner point was reestablished as hereon described on September 27, 2005.

Witness:

**REGISTERED
PROFESSIONAL
LAND SURVEYOR**

Stephen K. Haddock

**OREGON
JULY 9, 2001
STEPHEN K. HADDOCK
56295LS**

RENEWAL DATE 6-30-07

**UNION COUNTY
SURVEYOR**

Date Received 10/11/05
 Date Filed 10/21/05
 By [Signature]
 File No. 040-2005R

HORIZONTAL CONTROL DATA

UNION COUNTY, OREGON

OREGON STATE PLANE, NORTH ZONE (3601)

STA NAME: 200912

QUARTER CORNER COMMON TO SECTIONS 4 AND 5

TWP. 4 S RGE. 37 E.

GEODETIC COORD: NAD 83(91)

DATE TIED: MAY 4, 2009

LAT: 45 ° 14 ' 48.08773 " N

SURVEYOR: RICK ROBINSON
OPLS 2219

LONG: 118 ° 11 ' 54.19770 " W

FIRM: BAGETT, GRIFFITH, & BLACKMAN
2006 ADAMS AVENUE
LAGRANDE, OR 97850
(541) 963-6092

SP. COOR: NAD 83(91)

N: 584475.008 INT FT.

E: 8794786.952 INT FT.

TYPE: GPS

THETA: 1 ° 37' 56.2 "

ORDER: SECOND CLASS: 1

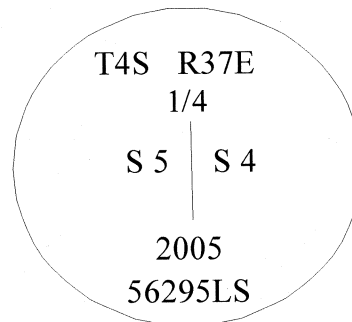
SCALE FACTOR: 0.9998955056

ELEV: 4066.4407 US FT.

ELEV: DATUM: NGVD 29

COMMENTS:

Corner is a 2 1/2" brass cap set marked as shown
set flush with the ground



Renewal Date: December 31, 2010

1 METER = 3.2808333333... US FEET = 39.37 INCHES

1 METER = 3.280839895 INT'L FEET OR 1 INCH = 2.54 CM

TO CALCULATE ELEVATION FACTOR (IN THE NORTH AMERICAN CONTINENT)

DIVIDE 20,906,000 BY (20,906,000 + ELLIPSOID ELEV. IN FEET)