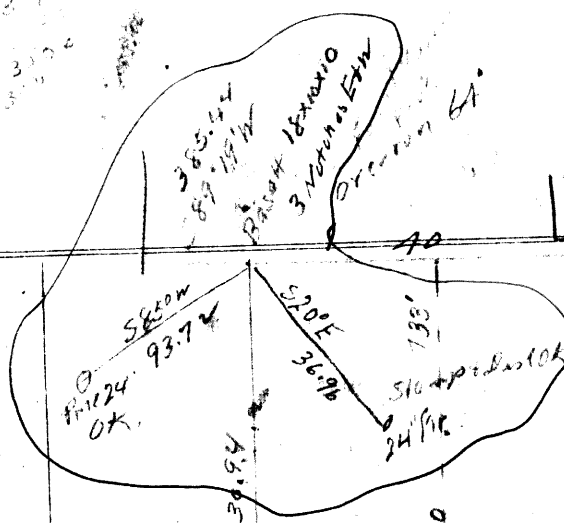


101.66  
656  
656  
72.20



Var 20° E  
50.0

1320  
5130 E  
Var 20° E

40 50.3 E

Var 20° E

14710.7

40.1

Var 20 3/4 E  
N 89° 56' W  
40.1  
18x10x10

Basalt 18x10x10  
12x12x6

Var 19 1/4

11x10x7

10

Post

11

Var 21 1/2 E

Index

File No. A-13

**CORNER RECORD (SEARCH)**

(Ref. FSM 7151.4)

Tract or Survey No. \_\_\_\_\_

Cor. No. \_\_\_\_\_

T 75 R. 37E

R.D. LA GRANDE

County UNION

NE COR

Merid. W11

N.F. W-W

State OR

Sec 7

**CORNER DIAGRAM**



**DESCRIBE CORNER MONUMENT FOUND**

*FOUND STONE OF CORRECT SIZE WITH PAINT MARKS, IN FENCE JACK.*

**DESCRIBE BEARING TREES OR OTHER OFFICIAL ACCESSORIES FOUND**

*NONE*

**PHOTO IDENTIFICATION DATA**

Photo No. \_\_\_\_\_

Filed At. \_\_\_\_\_

Object Ident. \_\_\_\_\_

Ident. By \_\_\_\_\_

*Signature*

**PLANE COORDINATE POSITION DATA**

State \_\_\_\_\_ Zone \_\_\_\_\_

X \_\_\_\_\_

Y \_\_\_\_\_

Estab. By \_\_\_\_\_

*Agency*

*Signature*

*JAMES LUSHER  
DAVE DAHLSTROM*

Title

Division

Headquarters

Date

FS-7100-52 (3/68)

*9/11/76*

**UNION COUNTY SURVEYOR**

Date Received \_\_\_\_\_

Date Filed 12-21-87

By S. LANGLITZ, DEPUTY

File No. 316-87R

A-13

**CERTIFIED RECORD OF LAND CORNER MONUMENTATION**

**HISTORY OF ORIGINAL CORNER ESTABLISHMENT:**

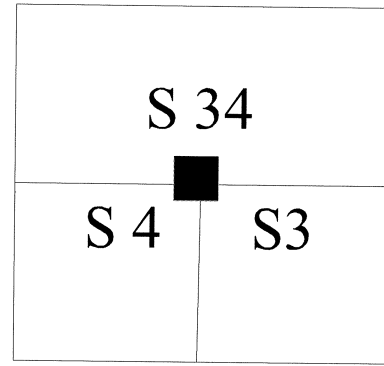
Corner originally established by Hermon D. Gradon under GLO contract number 452, dated June 6, 1882 Surveyor General record states:

Set Basalt stone 18"x10"x10", marked with 3 notches on the East and West edges, from which;

A Fir 24" dia. bears S20°E, 56 lks., marked T4S R37E S3 BT.

A Pine 24" dia. bears S 85°W, 142 lks., marked T4S R37E S4 BT.

T 4 S R 37 E A - 13



**DESCRIPTION OF CORNER EVIDENCE FOUND:**

Found 18"x10"x10" Basalt Stone on the West edge of existing fence jack, 3 visible marks on one side and 3 faint marks on the opposite side.

Corner falls on an East hillside approximately 150 feet West of creek and 3 feet North of existing East West fence line.

See Survey No. 008-2009

**DESCRIPTION OF MONUMENT AND ACCESSORIES I ESTABLISHED**

**TO PERPETUATE THE ORIGINAL LOCATION OF THIS CORNER:**

At found Stone position, I set a 5/8" rebar with a 2 1/2" Aluminum cap marked as shown, 28 inches in the ground, I buried found Stone South alongside monument, from which:

A 14" Ponderosa Pine that bears S 69° East, 42.85 feet, marked T4S R37E S3 BT.

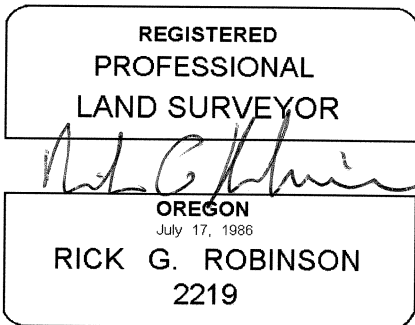
A 6" Douglas Fir that bears South 1°East, 43.56 feet, marked "X" BT.

A 18" Ponderosa Pine that bears South 13°West, 11.50 feet, marked T4S R37E S4 BT.

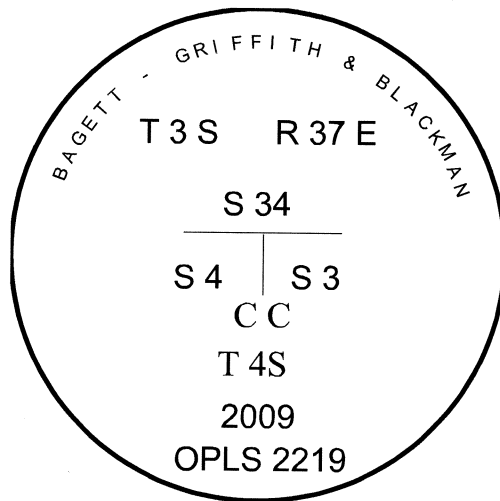
A 11" Ponderosa Pine that bears South 67°West, 21.45 feet, marked T4S R37E S4 BT.

I hereby certify that the above corner point was monumented as hereon described on May 20, 2009.

Witnesses: Gregory T. Blackman, Jr.



Renewal Date: December 31, 2010



**UNION COUNTY SURVEYOR**

Date Received 6/1/09

Date Filed 6/1/09

Filed By [Signature]

File Number 009-2009R

I used a steel tape and magnetic compass in the establishment of the new accessories. I use 18° East declination. The distances are to a 60d spike driven into the right side of the root crown of the bearing trees. Attached brass washer marked OPLS 2219 to BT Blaze.