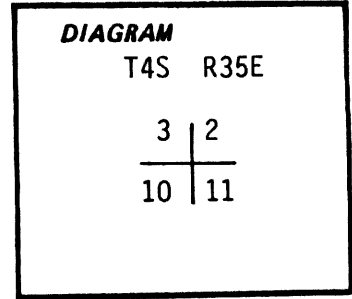


CERTIFIED RECORD OF LAND CORNER MONUMENTATION

E-17

History of original corner establishment:

Original subdivisional survey of T4S R35E performed by Rufus S. Moore under Contract No. 451 dated June 12, 1882: Set a basalt stone 22x10x7 ins., 16 ins. in the ground for Cor. to Sec's 2, 3, 10 and 11, marked with 5 notches on S and 2 notches on E edges, and raised a mound of stone alongside, pits impracticble.



Description of corner evidence found:

Found the original corner stone, a basalt stone, 23"x9"x7" marked with two distinct grooves on a face, no other markings found, lying loose in an area of scattered stones and among the remnants of an old fence.



Description of monument and accessories established to perpetuate the original location of this corner:

At the location of the found corner stone, we set a 2"x30" galvanized iron pipe, 26" in the ground, with brass cap, marked: Union Co. Surveyor

We bury the found corner stone along the NE side of the iron pipe.

We also place a steel fence post with "ATTENTION" sign attached approx. 4' south of the iron pipe.

We take the following measurements to aid in the verification of this corner position:

(Based on magnetic bearings by staff compass, distances by electronic distance meter and theodolite)

Measurements taken to left bank of Grande Ronde River to East and to Timberline and top of hill to North, measurements found to be in good agreement with the record dimensions.

Corner is located in open ground approx. 80 ft. South of a dirt road.

Magnetic Compass  
November 7, 1984

Witnesses:

Gary Langlitz, Deputy Union Co. Surveyor  
Dave Dahlstrom, U.S. Forest Service

<b>UNION COUNTY SURVEYOR</b>	
Date Received	<u>11-13-84</u>
Date Filed	<u>11-13-84</u>
By	<u>G. LANGLITZ, DEPUTY</u>
File No.	<u>1036-84 R</u>

Office of..... County of.....  
 State of....., I hereby certify that the within instrument was filed in this office  
 for record on the..... day of....., 19.....  
 ..... by .....  
 (COUNTY OFFICIAL) (DEPUTY)

**CERTIFIED RECORD OF LAND CORNER MONUMENTATION**

**HISTORY OF ORIGINAL CORNER ESTABLISHED:**

Corner was established by Rufus S. Moore under GLO contract number 451 dated June 12, 1882. Surveyor General field notes state:

Set a basalt stone 22x10x7 ins. 16 ins. in ground for cor. to sec's 2, 3, 10 and 11, marked with 5 notches on S and 2 notches on E edges, and raised a mound of stone alongside, pits impractical.

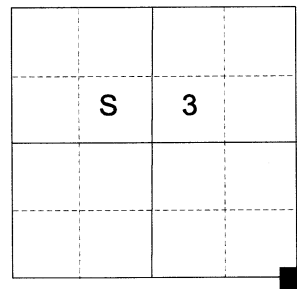
In 1984 Gary Langlitz, PLS 1099, found the stone. Union County Monumentation record 1036-84R states:

Found the original corner stone, a basalt stone, 23"x9"x7" marked with two distinct grooves on a face, no other markings found, lying loose in an area of scattered stones and among the remnants of an old fence. Set a 2"x30" galvanized iron pipe, 26" in the ground, with brass cap, marked:

We bury the found corner stone along the NE side of the iron pipe and place a steel fence post with "ATTENTION" sign attached approx. 4' South of the iron pipe.

We take measurements to left bank of Grande Ronde River to East and to timberline and top of hill to North to aid in the verification of this corner position.

T 4 S R 35 E E-17



**DESCRIPTION OF CORNER EVIDENCE FOUND:**

Found a 2 1/2" iron pipe with 2 1/2" brass cap marked as shown below, 2" above ground and in a 2' diam. mound of stone.

**DESCRIPTION OF MONUMENT AND ACCESSORIES I ESTABLISHED TO PERPETUATE THE ORIGINAL LOCATION OF THIS CORNER:**

From the iron pipe monument:

**NEW BEARING OBJECTS:**

A 5/8" x 30" iron pin bears North 50°51' East, a dist. of 13.84 ft., with 1 1/2" aluminum cap marked NE RP

A 5/8" x 30" iron pin bears South 46°07' East, a dist. of 11.92 ft., with 1 1/2" aluminum cap marked SE RP

A 5/8" x 30" iron pin bears South 51°48' West, a dist. of 22.30 ft., with 1 1/2" aluminum cap marked SW RP

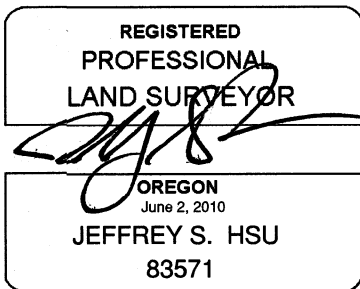
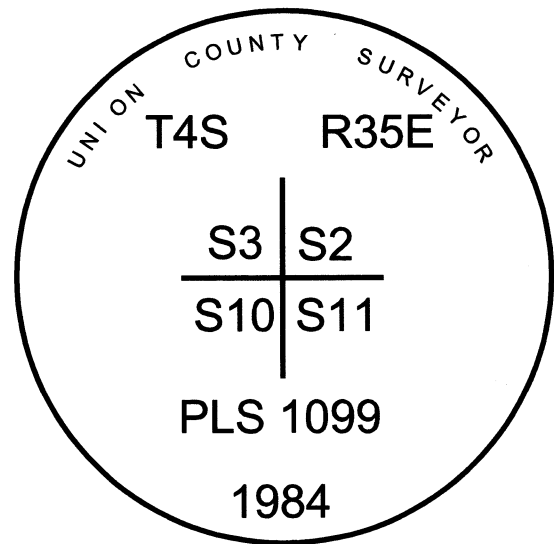
A 5/8" x 30" iron pin bears North 47°28' West, a dist. of 19.90 ft., with 1 1/2" aluminum cap marked NW RP

Set steel fence post approx. 2' South.

Monument falls approx. 50' South of East/West farm road and approx. 75' South of East/West fence line.

I hereby certify that the corner was perpetuated on December 4, 2020.

Witness: Kyle A. Tucker



Renewal Date: June 30, 2021

<b>UNION COUNTY SURVEYOR</b>	
Date Received	12/9/2020
Date Filed	12/9/2020
Filed By	<i>Jeffrey S. Hsu</i>
File Number	083-2020R

I used a Leica GS18 with RTK in the establishment of the new accessories. Basis of Bearing is derived from the Oregon Coordinate Reference System Pendleton-LaGrande. The distances and bearings are to the center of the aluminum caps.

# HORIZONTAL CONTROL DATA

## UNION COUNTY, OREGON

### OREGON STATE PLANE, NORTH ZONE (3601)

STA NAME: 2020052

SECTION CORNER COMMON TO SECTIONS 2, 3, 10 AND 11

TWP. 4 S RGE. 35 E.

GEODETIC COORD: NAD 83(91)

DATE TIED: December 4, 2020

LAT: 45 ° 14 ' 24.14095 " N

SURVEYOR: RICK G. ROBINSON  
OPLS 2219

LONG: 118 ° 24 ' 14.20964 " W

FIRM: BAGETT, GRIFFITH, & BLACKMAN  
2006 ADAMS AVENUE  
LAGRANDE, OR 97850  
(541) 963-6092

SP. COOR: NAD 83(91)

N: 580609.990 INT FT.

E: 8741928.932 INT FT.

TYPE: GPS

THETA: 1 ° 29 ' 11.369007 "

ORDER: SECOND CLASS: 1

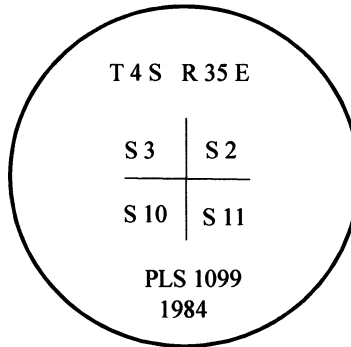
SCALE FACTOR: 0.9998953548

ELEV: 3484.39 US FT.

ELEV: DATUM: NGVD 29

**COMMENTS:**

2" iron pipe with 2 1/2" brass cap marked as shown.



REGISTERED  
PROFESSIONAL  
LAND SURVEYOR

*Rick G. Robinson*

OREGON  
July 17, 1986  
RICK G. ROBINSON  
2219

Renewal Date: December 31, 2020

1 METER = 3.2808333333... US FEET = 39.37 INCHES

1 METER = 3.280839895 INT'L FEET OR 1 INCH = 2.54 CM

TO CALCULATE ELEVATION FACTOR ( IN THE NORTH AMERICAN CONTINENT)

DIVIDE 20,906,000 BY (20,906,000 + ELLIPSOID ELEV. IN FEET)