

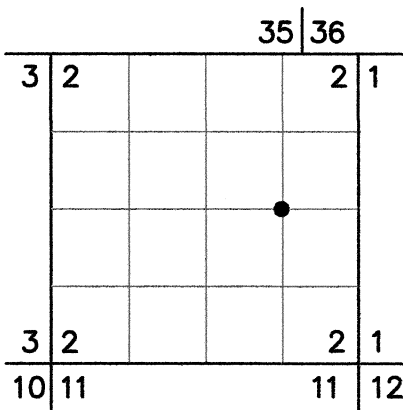
RECORD OF LAND CORNER MONUMENTATION

CENTER-EAST 1/16 CORNER SECTION 2, T. 4 S., R. 34 E., W.M.

ORIGINALLY ESTABLISHED BY: Corner not previously established

SURVEY NUMBER: N/A

FILED DATE: N/A



ORIGINAL DESCRIPTION: N/A

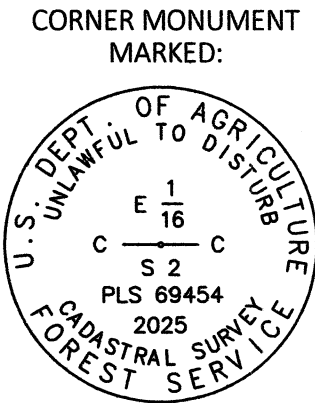
EVIDENCE FOUND: N/A

DESCRIPTION OF MONUMENTS AND ACCESSORIES SET AND METHODS USED:

At the corner point as determined by survey, I set a standard USFS 2½"x30" aluminum pipe with attached ¾" aluminum cap, 20" in the ground. Raised a 3 ft. diameter mound of stone around monument to cap. Cap is marked as shown below.

From which, I SCRIBE NEW BEARING TREES:

- ▶ A Douglas-fir, 18" dbh, bears S. 02° E., 82.03 ft., marked CE1/16S2 in upper blaze, and BT in lower blaze
- ▶ A ponderosa pine, 22" dbh, bears N. 67° W., 84.41 ft., marked CE1/16S2 in upper blaze, and BT in lower blaze



Placed a plastic-encased magnet at the base of the monument. Painted a 6" red band around each tree, and also painted the blazes red. Attached 54-3 and 54-9 signs to bearing trees. Bearings are geodetic, based on GPS observation at the corner. Used RTK GPS to measure accessories. Distances to bearing trees measured to a 60d nail driven in the side-center-right at the root crown of each tree, with attached 1½" aluminum washer stamped PLS 69454. I set an aluminum post North, 4.0 ft. with 54-9 and 54-2 USFS signs attached and another one East, 4.0 ft. from the monument with 54-2 USFS sign attached.

RESTORATION BY, STAMP AND DATE:

Work performed September 16, 2025  
Survey completed September 25, 2025

T. Jesus Quinones, LSIT

USDA FOREST SERVICE  
NORTHEAST OREGON LAND ZONE  
1550 Dewey Avenue, Suite A  
Baker City, OR 97814  
(541) 523-1283

UNION COUNTY SURVEYOR	
Date Received	12/18/25
Date Filed	12/18/25
By	
File No.	060-2025R

REGISTERED PROFESSIONAL LAND SURVEYOR
OREGON NOVEMBER 30, 2007 JASON L. HATFIELD #69454
EXPIRES: 6/30/2027