

CERTIFIED RECORD OF LAND CORNER MONUMENTATION

History of original corner establishment:

Index: V-19

Quarter corner Sec. 26 & 35, T.4N., R.39E., W.M.

Original corner was set by Campbell in 1884.

His notes record:

Set a fir post 3' long 3" square, 24 ins. in the ground, for 1/4 sec. cor., marked 1/4S on N. face; from which:

A fir 10 ins. diam., bears N10°W, 8 lks. dist. marked 1/4S BT. A fir 8 ins. diam., bears S50°W, 11 lks. dist. marked 1/4 S BT.

In 1979, OR PLS 1051 remonumented this corner.

His record reads:

Found no trace of wood post. Found 21" white fir with old valzetz location tag and 2 grown over blazes. An 11" white fir is partially opened and has visible scribing. Measured south 5.3 ft. and N40°E, 7.2 ft. At the above described point set 2 1/2" x 30" galvanized pipe and brass cap marked:(see diagram) Set pipe 24" in the ground. No rock in the area. From which:

A 13" white fir bears N36°W, 47.9 ft. scribed 1/4S26 BT.

A 16" white fir bears S32°E, 61.5 ft. scribed 1/4S35 BT.

Description of corner evidence found:

Found the galvanized pipe with brass cap stamped as shown in the diagram. From which:

A 23" dbh White Fir snag N0°13'E, 5.3' with healed blaze.

A 16" dbh White Fir S40°33'E, 7.5' with hole and healed blaze.

A 17" dbh White Fir bears N35°07'W, 48.2' with visible scribe.

A 16" dbh White Fir snag bears S31°10'E, 61.5' with healed blaze.

Description of monument and accessories I established to perpetuate the original location of this corner:

The bearings were based on the surveyed bearing between this corner and the corner 1/2 mile west as recorded by OPLS 644 in Union County survey 51-1991. I set the following new witness trees:

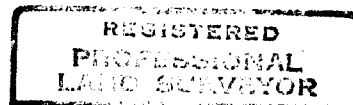
A 13" dbh White Fir bears N30°49'E, 53.7' scribed 1/4 S26 BT;

A 12" dbh Tamarack bears S40°17'E, 62.3' scribed 1/4 S35 BT.

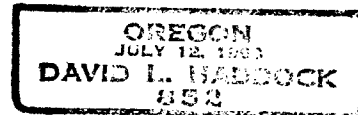
An aluminum washer stamped PLS 852 is nailed between the letters B and T on each new tree. All the BT's have LSM and BT signs attached.

Painted 6" red bands around all the trees and painted the scribe blazes red.

This work was done September 1, 1992.



David L. Haddock

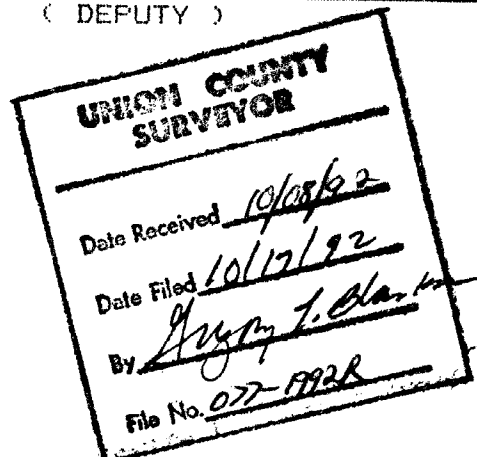


Office of _____ County of _____
 State of _____, I hereby certify that the within instrument was filed
 in this office for record on the _____ day of _____, 19____.

(COUNTY OFFICIAL)

(DEPUTY)

Form 36-7100-57 (9/71)

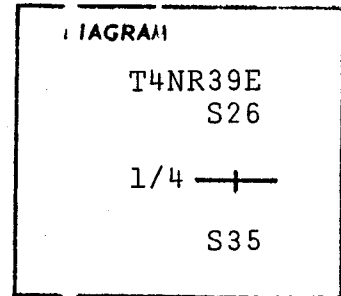


CERTIFIED RECORD OF LAND CORNER MONUMENTATION

Index File No. V-19

History of original corner establishment:

Corner was originally established by F. Campbell, under G.L.O. contract No. 498 in September, 1884. Surveyors General's notes state: "Set a fir post 3 ft. long 3 ins. square, 24 ins. in the ground, for 1/4 sec. cor., marked 1/4S on N. face; from which: A fir 10 ins. diam., bears N10°W, 8 lks. dist. marked 1/4S BT. A fir 8 ins. diam., bears S50°W, 11 lks. dist. marked 1/4S BT."



Description of corner evidence found:

Found no trace of wood post. Found 21" white fir with old valzetz location tag and 2 grown over blazes. An 11" white fir is partially opened and has visible scribing. Measured south 5.3 ft. and N40°E, 7.2 ft.

Description of monument and accessories established to perpetuate the original location of this corner

At the above described point set 2 1/2" x 30" galvanized pipe and brass cap marked: Set pipe 24" in the ground. No rock in the area. From which: A 13" white fir bears N36°W, 47.9 ft. scribed 1/4S26 BT. A 16" white fir bears S32°E, 61.5 ft. scribed 1/4S35 BT. Placed 54-3s and brass washers stamped PLS 1051 on BTs. Painted blazes red and 6" red band around. Placed 54-4 on steel fence post 5' West of corner.

T4NR39E
S26
1/4 —+
S35
OR PLS 1051
1979

**REGISTERED
PROFESSIONAL
LAND SURVEYOR**

Barry B. Barbour

**OREGON
OCT. 17, 1975
BARRY B. BARBOUR
1051**

I hereby certify that the above corner monument was reestablished as herein described.

Witnesses: David L. Landers
Robert Stevens
Ray McVey

July 13, 1979

Office of Union County Surveyor Union County of Union
State of Oregon, I hereby certify that the within instrument was filed in this office
for record on the 26 day of July, 1979
by _____
(COUNTY OFFICIAL) (DEPUTY)

**UNION COUNTY
SURVEYOR**

Date Received _____

Date Filed _____

By _____

File No. 17-83 R

CERTIFIED RECORD OF LAND CORNER MONUMENTATION

HISTORY OF ORIGINAL CORNER ESTABLISHED:

Corner originally established by Frank Campbell under contract number 498 dated May 1884. Surveyor General field notes state:

Set a fir post 3 ft. long, 3 ins. square, 24 ins. in the ground, for 1/4 sec. cor., marked 1/4S on N. face, from which:

- A Fir 10 ins. diam bears N 10° W 8 lks dist
- A Fir 8 ins. diam bears S 50° W 11 lks dist

In 1979 Barry Barbour found both bearing trees. Using the record distance and bearing to find the point, found no trace of the post. Union County Monumentation Record 17-83R states: At the above described point set a 2 1/2" x 30" galvanized pipe and brass cap marked as shown, 24" in the ground,

from which:

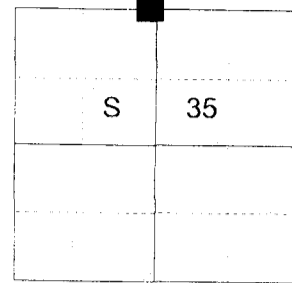
- A 13" White Fir bears N 36° W, 47.9 ft. marked 1/4 S26 BT.
- A 16" White Fir bears S 32° W, 61.5 ft. marked 1/4 S35 BT.

In 1992 David Haddock found the pipe with brass cap. Union County Monumentation Record 77-1992R states: Found the galvanized pipe with brass cap stamped as shown in the diagram.

From which:

- A 23" dbh White Fir snag N0°13'E, 5.3' with healed blaze.
- A 16" dbh White Fir S40°33'E, 7.5' with hole and healed blaze.
- A 17" dbh White Fir bears N35°07'W, 48.2' with visible scribe.
- A 16" dbh White Fir snag bears S31°10'E, 61.5' with healed blaze.
- I set the following new witness trees:
- A 13" dbh White Fir bears N30°49'E, 53.7' scribed 1/4 S26 BT.
- A 12" dbh Tamarack S40°17'E, 62.3' scribed 1/4 S35 BT.

T 4 N R 39 E V-19



DESCRIPTION OF CORNER EVIDENCE FOUND:

A 2 1/2" iron pipe with 2 1/2" brass cap marked as shown below, 5" above ground, from which:

- A 20" White Fir bears South 50° West, a dist. of 7.20 ft., alive with healed blaze.
- An 18" White Fir bears North 36° West, a dist. of 47.90 ft., dead and standing with healed blaze.
- A 16" White Fir stob bears North 31° East, a dist. of 53.70 ft., dead and standing 8 ft. tall with partial scribes visible on partially healed blaze.
- A 16" Tamarack bears South 40° East, a dist. of 62.30', alive and vigorous with healed blaze.

DESCRIPTION OF MONUMENT AND ACCESSORIES I ESTABLISHED TO PERPETUATE THE ORIGINAL LOCATION OF THIS CORNER:

From the iron pipe monument:

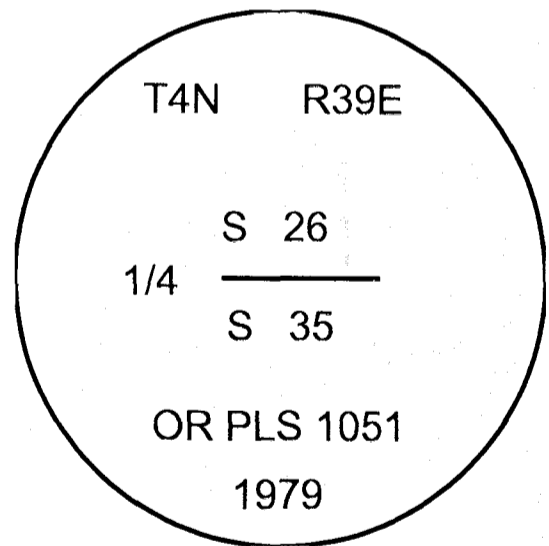
NEW BEARING OBJECTS:

- A 35" White Fir bears North 66° East a dist. of 24.95 ft., marked 1/4 S26 BT.
- A 6" Douglas Fir bears North 70° West a dist. of 16.20 ft., marked 1/4 S26 BT.

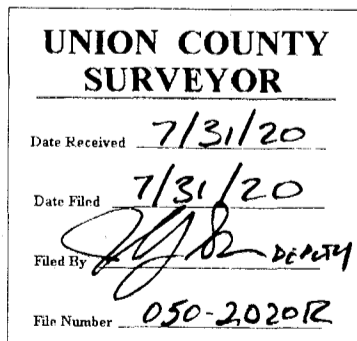
I hereby certify that the corner was perpetuated on July 8, 2020.

Witness: Kyle A. Tucker

Line is posted East and West through monument with Forest Service Boundary tags on fence posts.



Renewal Date: June 30, 2021



I used a steel tape and magnetic compass in the establishment of the new accessories. I used 14° East declination, the distances are to a 60d spike driven into the right side of the root crown of the bearing trees. A brass washer marked OPLS 83571 is attached to the BT blaze of the new bearing trees.