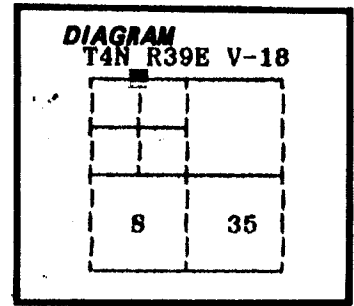


CERTIFIED RECORD OF LAND CORNER MONUMENTATION

History of original corner establishment:
 Corner not previously established.



No record of subsequent monumentation found in Union County survey records.

Description of corner evidence found:
 Corner not previously established.

See map of survey number 051-1991, Union County Surveyor Records.

Description of monument and accessories I established to perpetuate the original location of this corner: At position determined by survey, I set a 2½" x 30" aluminum pipe with aluminum cap marked as shown, 26 inches in the ground, from which:

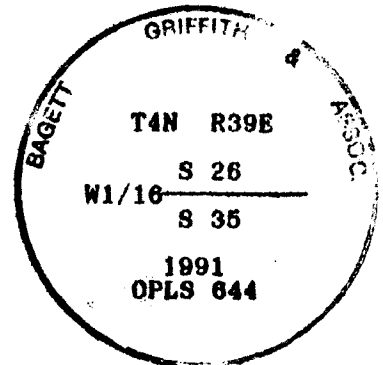
New BTs:
 A 14 inch diameter White Fir bears N 51°E, 16.72 feet marked W 1/16 S26 BT
 A 15 inch diameter Tamarack bears S 67°W, 32.31 feet marked W 1/16 S95 BT
 Corner falls in an East West Fence line.

Painted a 6 inch red band around all BTs and attached bearing tree and land survey monument signs.

Set a steel fence post approximately 5 feet North with land survey monument and property boundary signs attached.

I hereby certify that the above corner point was perpetuated as hereon described on September 11, 1991

Witness: Jeff Petersen, Jim Bennett.



REGISTERED PROFESSIONAL LAND SURVEYOR

 OREGON
 JULY 10, 1974
 DUANE L. GRIFFITH
 644

I used a steel tape and magnetic compass in the establishment of new accessories. I used 20° East magnetic declination and the distances are to a 50d spike driven in the right side of the root crown. I attached a brass washer marked OPLS 644 to the BT blaze.

Office of County Surveyor County of UNION
 State of Oregon I hereby certify that the within instrument was filed in this office for record on the 16th day of September 1991
Gregory T. Blackman
 (COUNTY OFFICIAL)

UNION COUNTY SURVEYOR (DEPUTY)

Date Received 9/16/91

Date Filed 9/16/91

By Gregory T. Blackman

File No. 020-1991R

Form R6-7100-57 (9/71)

★GPO:

V-18

CERTIFIED RECORD OF LAND CORNER MONUMENTATION

HISTORY OF ORIGINAL CORNER ESTABLISHED:

Corner originally established by Duane Griffith in 1991 in Survey 051-1991. Union County Monumentation Record 020-1991R states: At position determined by survey, I set a 2 1/2" x 30" aluminum pipe with aluminum cap marked as shown, 26" in the ground,

from which:

A 14" White Fir bears N 51° E, 16.72 feet marked W 1/16 S26 BT.

A 15" Tamarack bears S 67° W, 32.31 feet marked W 1/16 S35 BT.

Corner falls in an East/West fence line.

T 4 N R 39 E V-18

S	35

DESCRIPTION OF CORNER EVIDENCE FOUND:

A 2 1/2" aluminum pipe with 2 1/2" aluminum cap marked as shown below, 4" above ground, from which:

A 15" White Fir bears North 51° East, a dist. of 16.70 feet, dead and down with scribes visible on partially healed blaze.

A 17" Tamarack bears South 67° West, a dist. of 32.30 feet, alive and vigorous with healed blaze.

A fence post with monumentation tags bears approx. 0.3 ft. East.

DESCRIPTION OF MONUMENT AND ACCESSORIES I ESTABLISHED TO PERPETUATE THE ORIGINAL LOCATION OF THIS CORNER:

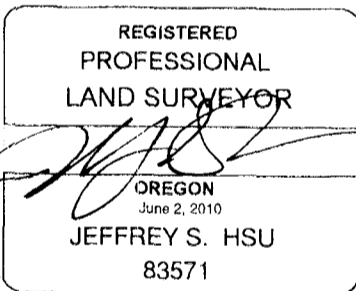
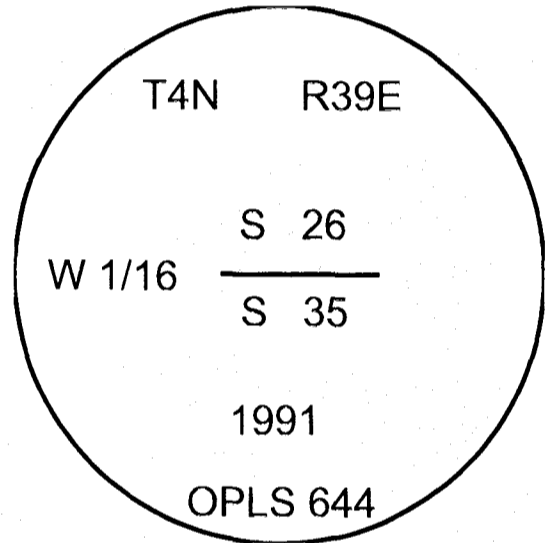
From the aluminum pipe monument:

NEW BEARING OBJECTS:

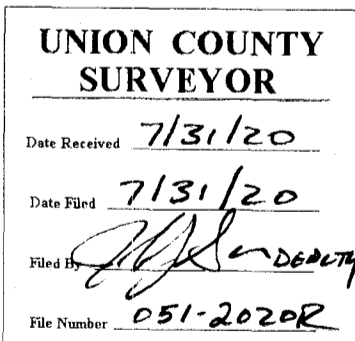
A 6" White Fir bears North 52° East a dist. of 6.60 ft., marked W 1/16 S26 BT.

I hereby certify that the corner was perpetuated on July 8, 2020.

Witness: Kyle A. Tucker



Renewal Date: June 30, 2021



I used a steel tape and magnetic compass in the establishment of the new accessories. I used 14° East declination, the distances are to a 60d spike driven into the right side of the root crown of the bearing trees. A brass washer marked OPLS 83571 is attached to the BT blaze of the new bearing trees.