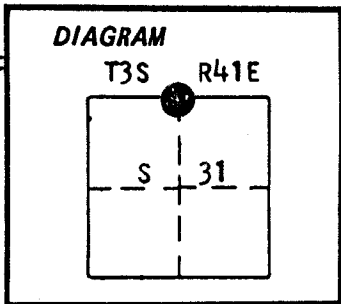


CERTIFIED RECORD OF LAND CORNER MONUMENTATION

History of original corner establishment:

Corner originally established by Alonzo Gesner under GLO contract number 683 dated June 7, 1898. Surveyor General record states:



Set Basalt stone 28"x14"x7" 18 inches in the ground on West hillside for 1/4 corner between sections 30 and 31.  
From which:

A 16" Red Fir bears N 78° E, 61 lks.

A 14" Red Fir bears S 74° E, 43 lks.

No record of subsequent remonumentation found in county records.  
Description of corner evidence found:

Stone 27"x17"x7" marked 1/4 set 10 inches in ground.

Remains of a Red Fir bears N 78° E, 61 lks, dead and down rotted, no marks visible.

A stump hole bears S 74° E, 43 lks.

See survey number 29-86 filed in the office of the Union County Surveyor  
Description of monument and accessories established to perpetuate the

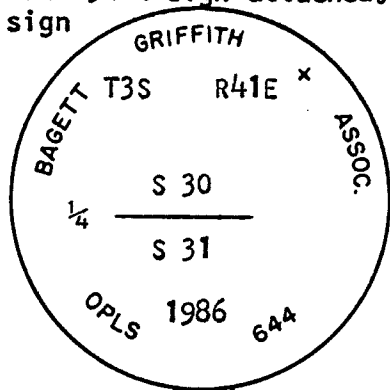
original location of this corner: At the stone position, I set a 2 1/2"x30" aluminum pipe with aluminum cap marked as shown 30 inches in the ground and raised a mound of stone with a 2 foot base to top of cap. From which:

A 9 inch White Fir bears S 23° E, 8.43 feet, marked 1/4 S 31 BT.

A 15 inch White Fir bears N 1° W, 44.60 feet, marked 1/4 S 30 BT.

Set a steel fence post approximately 5 feet North with a 54-2 and 54-4 sign attached.  
Set a steel fence post approximately 5 feet East with a 54-2 sign attached.

Corner set; 9/5/86  
Witness: Rick Robinson  
Buried Stone South of cap



Brass washer marked OPLS 644 nailed to BT blaze. Used steel tape and magnetic compass with 20° East declination. Distances to the BTs are to a 50d spike set in right side of tree when facing tree, unless otherwise stated.

**REGISTERED PROFESSIONAL LAND SURVEYOR**

*Duane I. Griffith*

OREGON  
JULY 10, 1964  
**DUANE I. GRIFFITH**  
644

Office of..... County of.....  
State of....., I hereby certify that the within instrument was filed in this office for record on the..... day of....., 19...

.....  
(COUNTY OFFICIAL) **UNION COUNTY SURVEYOR** (DEPUTY)

Form R6-7100-57 (9/71)

Date Received 10-20-86  
Date Filed 10-27-86  
By G. LANGRIZ DEPUTY  
File No. 221-86 R

☆ U.S. GOVERNMENT PRINTING OFFICE - 1983-793-276

V-8

**CERTIFIED RECORD OF LAND CORNER MONUMENTATION**

**HISTORY OF ORIGINAL CORNER ESTABLISHED:**

Corner originally established by Alonzo Gesner under GLO contract number 683 dated June 7th, 1898. Surveyor General field notes state:

Set basalt stone 28x14x7, 18 inches in the ground on West hillside for 1/4 corner between sections 30 and 31, from which:

- A 16" Red Fir bears N 78° E, 61 lks.
- A 14" Red Fir bears S 74° E, 43 lks.

Corner found on Union County survey number 29-86. Union County monumentation record 221-86R states:

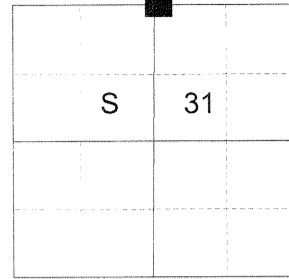
Found: stone 27"x17"x7" marked 1/4 set 10 inches in ground. Remains of a Red Fir bears N 78° E, 61 lks, dead and down rotted, no marks visible.

A stumphole bears S 74° E, 43 lks.

At the stone position, I set a 2 1/2" x 30" aluminum pipe with aluminum cap marked as shown, 30 inches in the ground and raised a mound of stone with a 2 foot base to top of cap, from which:

- A 9" White Fir bears S 23° E, 8.43 feet, marked 1/4 S31 BT.
- A 15" White Fir bears N 1° W, 44.60 feet, marked 1/4 S30 BT.
- Set steel fenceposts approx. 5 feet North and 5 feet East.
- Buried stone South of cap.

T 3 S R 41 E V-03



**DESCRIPTION OF CORNER EVIDENCE FOUND:**

Found a 2 1/2" aluminum pipe, 3" below ground in 2' collar of stone, with 2 1/2" aluminum cap marked as shown, from which:

- A 16" White Fir bears South 23° East, a dist. of 8.43 feet, alive and vigorous with healed blaze.
- A 17" White Fir stump, 6' tall, bears North 1° West, a dist. of 44.60 feet, dead and standing with healed blaze.

Steel fenceposts bear North 5' and East 5'.

**DESCRIPTION OF MONUMENT AND ACCESSORIES I ESTABLISHED TO PERPETUATE THE ORIGINAL LOCATION OF THIS CORNER:**

From the aluminum pipe monument:

**NEW BEARING OBJECTS:**

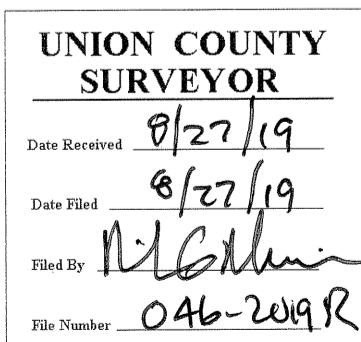
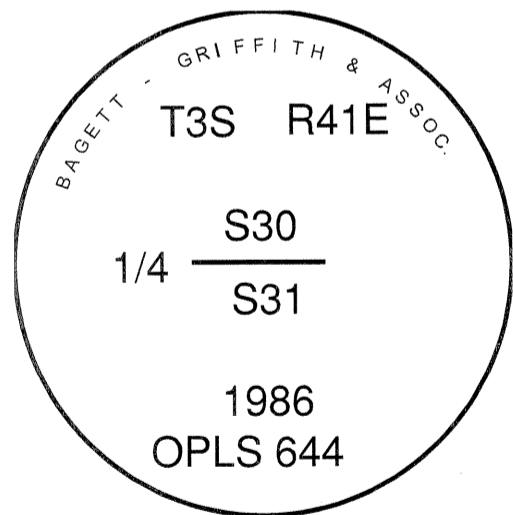
- An 11" Double bole White Fir bears North 44° East a dist. of 12.70 ft., marked 1/4 S30 BT.
- A 9" White Fir bears South 78° West a dist. of 12.85 ft., marked 1/4 S31 BT.
- A 6" White Fir bears North 60° West a dist. of 14.35 ft., marked 1/4 S30 BT.

Fence corner from which fences run North and East bears approx. 15' North  
I hereby certify that the corner was perpetuated on July 29, 2019.

Witness: Kyle A. Tucker



Renewal Date: June 30, 2021



I used a steel tape and magnetic compass in the establishment of the new accessories. I used 13° East declination, the distances are to a 60d spike driven into the right side of the root crown of the bearing trees. A brass washer marked OPLS 83571 is attached to the BT blaze of the new bearing trees.