

CERTIFIED RECORD OF LAND CORNER MONUMENTATION

L 17

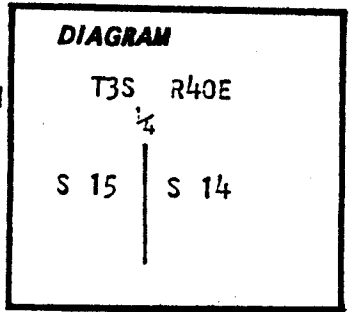
History of original corner establishment:

Corner originally established by David T. Thompson, under GLO contract number 103, dated September 3, 1863. Surveyor General record states:

Set post for 1/4 Sec corner in mound of earth and stone with charred stake, pits, trench as per instructions

Survey number 69-71 by James G. Voelz calls finding a rock mound with corner post.

Survey number 40-79 by Gregory T. Blackman calls finding a rock mound in the position called in survey number 69-71, and set a 1 1/2 inch diameter pipe for the 1/4 corner. This position was used by survey number 5-80.



Description of corner evidence found:

Found 1 1/2 inch diameter pipe in rock mound as per survey number 40-79

UNION COUNTY SURVEYOR

Date Received 2 April 84

Date Filed 3 April 84

By H. Perry

File No. 834

~~237~~ - 84 R

Description of monument and accessories I established to perpetuate the original location of this corner:

NONE

See survey number 7-84

REGISTERED PROFESSIONAL LAND SURVEYOR

Gregory T. Blackman

OREGON
 JULY 13, 1973
GREGORY T. BLACKMAN
 991

Office of..... County of.....
 State of....., I hereby certify that the within instrument was filed in this office
 for record on the..... day of....., 19.....

..... by

(COUNTY OFFICIAL)

(DEPUTY)

CERTIFIED RECORD OF LAND CORNER MONUMENTATION

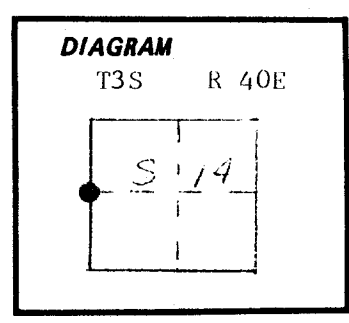
History of original corner establishment:

Corner originally established by David T. Thompson, under GLO contract number 103, dated September 3, 1863. Surveyor general record states:

Set post for 1/4 section corner in mound of earth and stone with charred stake, pits, trench as per instructions.

Survey number 69-71 by James G. Voelz calls finding a rock mound with corner post.

Survey number 40-79 by Gregory T. Blackman calls finding a rock mound in the position called in survey number 69-71, and set a 1 1/2 inch diameter pipe for the 1/4 corner. This position was used by survey number 5-80.



Description of corner evidence found:

Found 1 1/2 inch diameter pipe in rock mound as per survey number 40-79

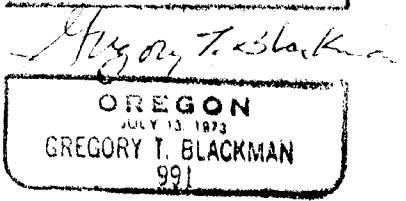
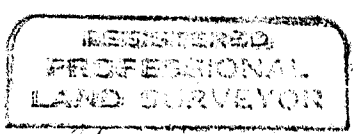
Description of monument and accessories I established to perpetuate the original location of this corner:

At the pipe position, I set a 2 1/2 inch x 30" aluminum pipe with aluminum cap marked as shown 24" in the ground and raised a small mound of stone around cap. Corner falls 2 feet north and 1 foot East of fence corner.

No Bts available.

Witness: Rick Robinson.
Corner set 4/24/87

Placed 1 1/2 pipe inside of aluminum pipe.



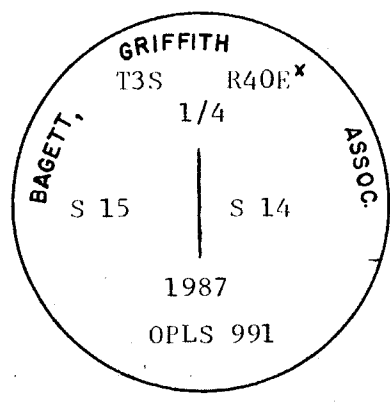
UNION COUNTY SURVEYOR

Date Received 4-28-87

Date Filed 4-30-87

by G. LANGLITZ, Deput

File No. 15-87 R



Office of..... County of.....
 State of....., I hereby certify that the within instrument was filed in this office
 for record on the..... day of....., 19.....
 by
 (COUNTY OFFICIAL) (DEPUTY)

HORIZONTAL CONTROL DATA

UNION COUNTY, OREGON
OREGON STATE PLANE, NORTH ZONE (3601)

STA. NAME: 9337

QUARTER CORNER: 15 / 14

TWP.3 S. RGE.40 E.

DATE SET: OCT. 1993

SURVEYOR: WALTER L. CASWELL
PLS 737

FIRM: EAGLE GPS SURVEY CORP
13545 NW SCIENCE PARK DR
PORTLAND, OR. 97229
(503) 643-1073

TYPE: GPS

ORDER: SECOND CLASS: 1

GEODETTIC COOR: NAD 83(91)

LAT: 45°18'14.92949" N

LONG: 117°47'16.32792" W

SP. COOR: NAD 83(91)

N: 608690.929 INT.FT.

E: 8899759.869 INT.FT.

THETA: 1°55'24.259"

SCALE FACTOR: 0.999897368

ELEV: 3241.83 US.FT.

ELEV. DATUM: NGVD 29

DIRECTIONS "TO REACH": FROM HIGHWAY 237 AND HAEFER LANE IN COVE,
GO EAST, NORTH AND EAST AGAIN ON HAEFER LANE FOR 1 1/2 MILES TO
AN INTERSECTION WITH STACKLAND ROAD AND THE PAVEMENT ENDS. GO
NORTH ON STACKLAND ROAD FOR 0.4 MILES TO AN INTERSECTION WITH
ANTLES ROAD TO THE WEST. GO WEST ON ANTLES ROAD FOR 0.15 MILES
TO A FENCE-LINE RUNNING OFF TO THE SOUTH.
FOLLOW THE FENCE-LINE OUT INTO THE PASTURES TO
AN EAST-WEST FENCE-LINE. CROSS THIS FENCE AND
CONTINUE TO THE SOUTH TO ANOTHER EAST-WEST
FENCE AND A ROCK-JACK. THE CORNER IS A 5/8"
IRON ROD WITH A 2 1/2" ALUMINUM CAP, SEVERAL
INCHES TO THE SOUTHEAST OF THE ROCK-JACK.

REGISTERED
PROFESSIONAL
LAND SURVEYOR

Walter L. Caswell
OREGON
JULY 8, 1966
WALTER L. CASWELL
737

EXPIRES 12/31/95

1 METER = 3.280833333333... U.S. FEET = 39.37 INCHES
1 METER = 3.280839895 INT'L FEET OR 1 INCH = 2.54 CM.
TO CALCULATE ELEVATION FACTOR (IN THE NORTH AMERICAN CONTINENT)
DIVIDE 20,906,000 BY (20,906,000 + ELLIPSOID ELEV. IN FEET)
SHEET 35 OF 37