

CERTIFIED RECORD OF LAND CORNER MONUMENTATION

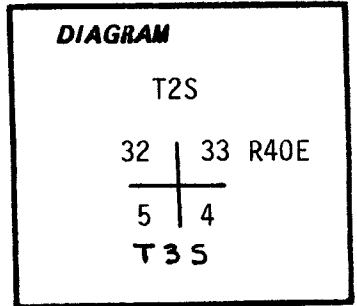
History of original corner establishment:

Original survey by Davenport, Contract No. 102, 1863;

Set post corner to Sections 4, 5, 32 and 33, made mound of earth and drove charred stake as per instructions.

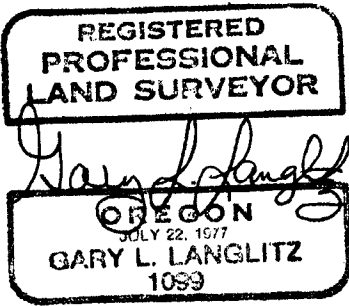
Resurvey by J. W. Kimbrell, October 21, 1888 (Union Co. "Old Survey Book", pg. 110-111);

Set stone 8x10x15 for corner to Sec. 4-5-32 and 33.



Description of corner evidence found:

No evidence of prior survey monumentation was found.



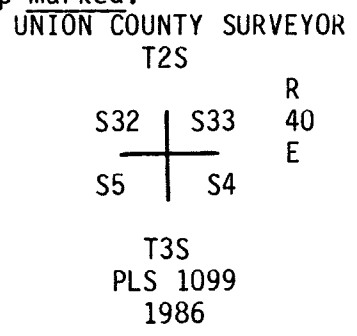
UNION COUNTY SURVEYOR

Date Received 5-21-86
 Date Filed 5-22-86
 By G. LANGLITZ, DEPUTY
 File No. 41-86 R

Description of monument and accessories I established to perpetuate the original location of this corner:

Refer to Union County Survey No. 13-86 for a thorough discussion of the establishment of this corner and the evidence and factors considered.

At the corner point determined as shown on Union Co. Survey 13-86, we set a 2"x30" Aluminum Pipe, buried 6" below ground approximately four feet West of the westerly edge of the graveled surface of Lower Cove Road (Union County Road No. 128), with aluminum cap marked:



From which:

A 3" dia. iron pipe, with brass cap marked:
 U.S. GEOLOGICAL SURVEY
 B.M.
 +
 ELEVATION ABOVE SEA-
 LEVEL DATUM A 2690 FEET

bears S88°53'W 12.34 feet.
 No other accessories available.
 This corner is in line with a drainage ditch and fence running East.
 April 24, 1986
 Gary Langlitz, LS 1099
 Deputy Union County Surveyor
 Kevin Leckenby

Office of..... County of.....
 State of..... I hereby certify that the within instrument was filed in this office
 for record on the..... day of....., 19.....
 by
 (COUNTY OFFICIAL) (DEPUTY)

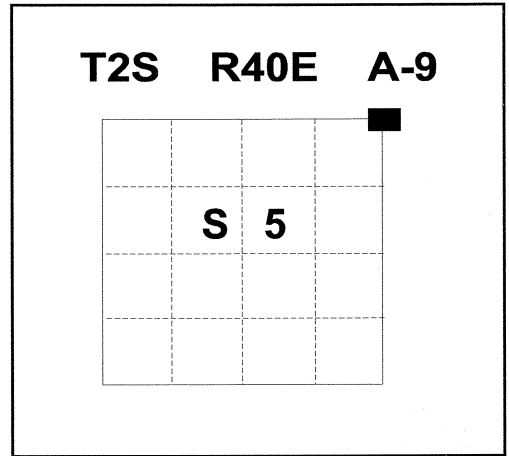
CERTIFIED RECORD OF LAND CORNER MONUMENTATION

HISTORY OF ORIGINAL CORNER ESTABLISHMENT:

Corner originally established by Timothy W. Davenport Contract No. 102, dated July 20, 1863. Surveyor General records states: Set post for section corner and built mound of earth with charred stake, pits and trenches as per instructions.

Resurveyed by J.W. Kimbrell, October 21, 1888 (Union Co. Old Survey Book", Page 110-111);
Set stone 8x10x15 for corner to Sections 4-5-32 and 33.

Monumentation record 41-86R states: Set 2" Aluminum cap 6" below ground at the corner position situated on the West edge of existing gravel road. Marked as shown. From which:
A 3" Pipe with Brass cap bears S88°53'W, a distance of 12.34 feet, marked as shown.



U.S.
GEOLOGICAL
SURVEY



B.M.

ELEVATION ABOVE SEA-
LEVEL DATUM A 2690 FEET

DESCRIPTION OF CORNER EVIDENCE FOUND:

No evidence of the original corner was found.

Found: Corner monument and accessory as per monumentation record 41-86R.

See Union County Survey Number 013-1986.

DESCRIPTION OF MONUMENT AND ACCESSORIES I ESTABLISHED

TO PERPETUATE THE ORIGINAL LOCATION OF THIS CORNER:

NEW BEARING OBJECTS:

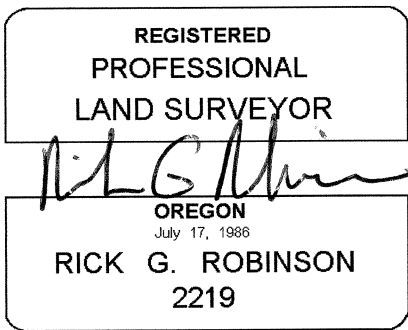
A 5/8" x 30" rebar with 1½" aluminum cap bears N 61°E, a distance of 45.00 feet, marked NE R.P.

A 5/8" x 30" rebar with 1½" aluminum cap bears S 68°E, a distance of 41.43 feet, marked SE R.P.

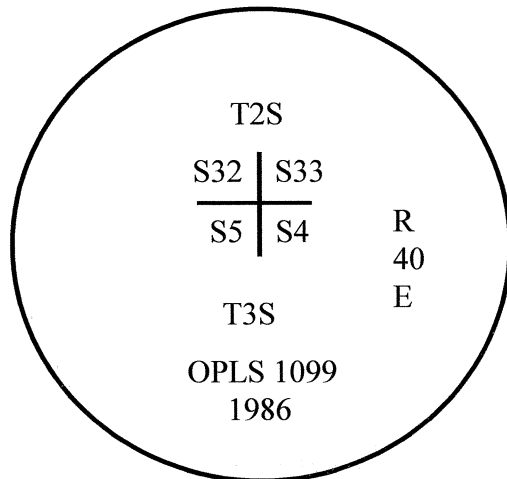
A 5/8" x 30" rebar with 1½" aluminum cap bears N 10°W, a distance of 12.55 feet, marked NW R.P.

I hereby certify that the corner was rehabilitated on July 14, 2010

Witness: Greg Blackman Jr. & Jeff Hsu



Renewal Date: December 31, 2010



UNION COUNTY SURVEYOR

Date Received 7/30/2010

Date Filed 7/30/2010

Filed By Greg G. Blackman

File Number 025-2010R

I used a compass and steel tape in the establishment of the new accessories. I used 18° East declination, distances are to center of aluminum cap. Basis of Bearing for existing accessory is that of Survey number 13-86.

HORIZONTAL CONTROL DATA

UNION COUNTY, OREGON

OREGON STATE PLANE, NORTH ZONE (3601)

STA NAME: 201021

SECTION CORNER COMMON TO SECTIONS 32 AND 33, T 2 S AND SECTIONS 4 AND 5, T 3 S

TWP. 2/3 S. RGE. 40 E.

GEODETIC COORD: NAD 83(91)

DATE TIED: JULY 15, 2010

LAT: 45 ° 20 ' 25.59059 " N

SURVEYOR: RICK G. ROBINSON
OPLS 2219

LONG: 117 ° 49 ' 45.88674 " W

FIRM: BAGETT, GRIFFITH, & BLACKMAN
2006 ADAMS AVENUE
LAGRANDE, OR 97850
(541) 963-6092

SP. COOR: NAD 83(91)

N: 621560.368 INT FT.

E: 8888639.780 INT FT.

TYPE: GPS

THETA: 1 ° 53 ' 38.2 "

ORDER: SECOND CLASS: 1

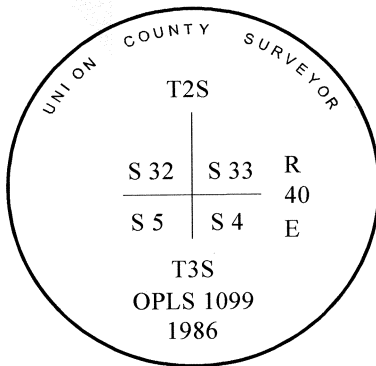
SCALE FACTOR: 0.9998990627

ELEV: 2694.63 US FT.

ELEV: DATUM: NGVD 29

COMMENTS:

Corner is 2" aluminum cap in West
Edge of road, buried 6"



1 METER = 3.2808333333... US FEET = 39.37 INCHES

1 METER = 3.280839895 INT'L FEET OR 1 INCH = 2.54 CM

TO CALCULATE ELEVATION FACTOR (IN THE NORTH AMERICAN CONTINENT)

DIVIDE 20,906,000 BY (20,906,000 + ELLIPSOID ELEV. IN FEET)