

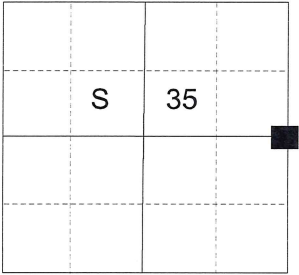
CERTIFIED RECORD OF LAND CORNER MONUMENTATION

HISTORY OF ORIGINAL CORNER ESTABLISHED:

Corner was originally established under GLO contract number No. 103, dated September 3, 1963, executed David P. Thompson. Surveyor General field notes state:

Set post for 1/4 sec. corner in mound of earth with charred stake, pits, trench, as per instructions.

T 3 S R 39 E X-21



DESCRIPTION OF CORNER EVIDENCE FOUND:

None. Position falls in Godley Road.

SEE SURVEY NUMBER 018-2025

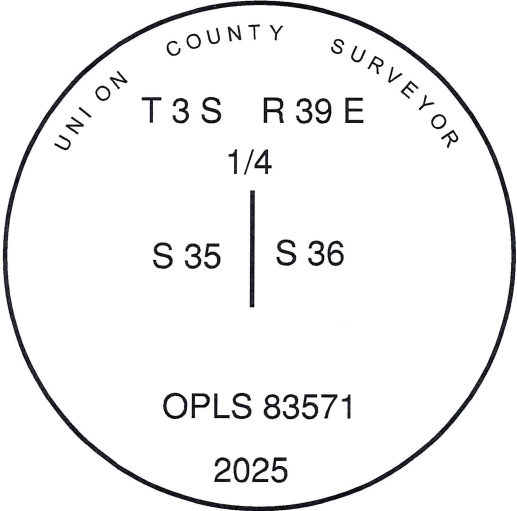
DESCRIPTION OF MONUMENT AND ACCESSORIES I ESTABLISHED TO REHABILITATE THE MONUMENT AT THE ORIGINAL LOCATION OF THIS CORNER:

At position by Survey, I set a 5/8" x 30" iron pin, with 3" brass cap, marked as shown below, 38" in the ground and below the gravel road surface, from which:

NEW BEARING OBJECTS:

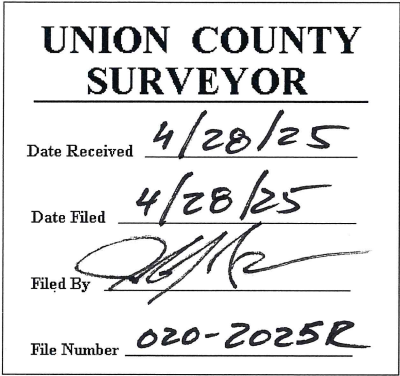
- A 5/8" x 30" iron pin bears North 44°39' East, a distance of 30.47 feet, with 1 ½" aluminum cap marked UNION COUNTY SURVEYOR NE RP.
- A 5/8" x 30" iron pin bears South 40°53' East, a distance of 35.41 feet, with 1 ½" aluminum cap marked UNION COUNTY SURVEYOR SE RP.
- A 5/8" x 30" iron pin bears South 43°48' West, a distance of 60.20 feet, with 1 ½" aluminum cap marked UNION COUNTY SURVEYOR SW RP.
- A 5/8" x 30" iron pin bears North 38°02' West, a distance of 28.91 feet, with 1 ½" aluminum cap marked UNION COUNTY SURVEYOR NW RP.

I hereby certify that the corner was monumented on April 15, 2025



Renewal Date: June 30, 2025

I used RTK GPS in the establishment of the accessories. Bearing and distances are to the center of the aluminum caps. Basis of bearings is as per Survey Number 018-2025.



**HORIZONTAL CONTROL DATA**  
**UNION COUNTY, OREGON**  
**OREGON STATE PLANE, NORTH ZONE (3601)**

STA NAME: 2025018

QUARTER CORNER COMMON TO SECTIONS 35 AND 36

TWP. 3 S RGE. 39 E

GEODETIC COORD: NAD 83(91)

DATE TIED: April 15, 2025

LAT: 45 ° 15 ' 38.22334 " N

SURVEYOR: JEFFREY S. HSU  
OPLS 83571

LONG: 117 ° 53 ' 27.98984 " W

FIRM: BAGETT, GRIFFITH, & BLACKMAN  
2006 ADAMS AVENUE  
LAGRANDE, OR 97850  
(541) 963-6092

SP. COOR: NAD 83(91)

N: 591954.414 INT FT.

E: 8873724.688 INT FT.

TYPE: GPS

THETA: 1 ° 51 ' 0.7 "

ORDER: SECOND CLASS: 1

SCALE FACTOR: 0.999895865

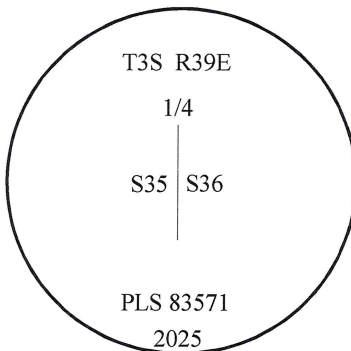
ELEV: 2694.68 US FT.

ELEV: DATUM: NGVD 29

---

COMMENTS:

3" Brass Cap marked as shown in  
center of road



Renewal Date: June 30, 2025

1 METER = 3.280833333... US FEET = 39.37 INCHES

1 METER = 3.280839895 INT'L FEET OR 1 INCH = 2.54 CM

TO CALCULATE ELEVATION FACTOR ( IN THE NORTH AMERICAN CONTINENT)

DIVIDE 20,906,000 BY (20,906,000 + ELLIPSOID ELEV. IN FEET)

GEOID MODEL : 2012B