

CERTIFIED RECORD OF LAND CORNER MONUMENTATION

HISTORY OF ORIGINAL CORNER ESTABLISHED:

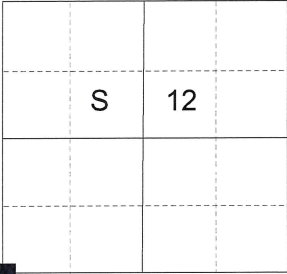
Corner was originally established under GLO contract number No. 103, dated September 3, 1963, executed David P. Thompson. Surveyor General field notes state:

Set post on right bank of Grande Ronde River for corner to Secs 11, 12, 13 and 14 in mound of earth with charred stake. Pins, trenches as per instructions.

In Old Book Survey Page 91, J.W. Kimbrell finds no remaining evidence of the original corner and resets it by proportionate measure. Old Book Survey states:

Set Stone 25x10x5 inches on South side of Slough for the corner to Secs, 11,12,13 & 14

T 3 S R 39 E J-21



DESCRIPTION OF CORNER EVIDENCE FOUND:

Found a stone, firmly set, measuring 9"x6" protruding 9" above ground with 2 notches on the North and a 'S' chiseled on the South side. Upon excavation, the stone measures 24" long.

SEE SURVEY NUMBER 018-2025

DESCRIPTION OF MONUMENT AND ACCESSORIES I ESTABLISHED TO REHABILITATE THE MONUMENT AT THE ORIGINAL LOCATION OF THIS CORNER:

At the stone position, I set a 2 ½" x 30" aluminum pipe, with 3" aluminum cap, marked as shown below, 30" in the ground, from which:

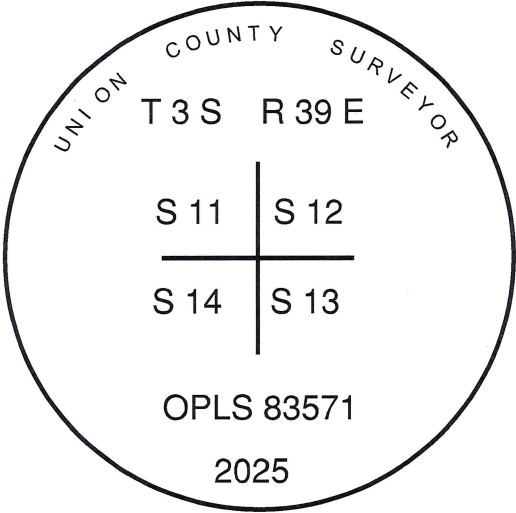
NEW BEARING OBJECTS:

- A 5/8" x 30" iron pin bears North 43°41'10" East, a distance of 107.80 feet, with 1 ½" aluminum cap marked UNION COUNTY SURVEYOR NE RP.
- A 5/8" x 30" iron pin bears South 42°02'00" East, a distance of 77.00 feet, with 1 ½" aluminum cap marked UNION COUNTY SURVEYOR SE RP.
- A 5/8" x 30" iron pin bears South 75°29'26" West, a distance of 203.42 feet, with 1 ½" aluminum cap marked UNION COUNTY SURVEYOR SW RP.
- A 5/8" x 30" iron pin bears North 42°58'17" West, a distance of 155.22 feet, with 1 ½" aluminum cap marked UNION COUNTY SURVEYOR NW RP.

Buried stone upside down on South side of monument. Set a steel fencepost 0.5 ft. to the East.

Corner falls on South side of slough approximately 2 ft. East of the North/South running fence and 35 feet North of a fence corner from which fences run North and West. Northeast, Northwest and Southwest reference pins are set on the North and West side of said slough so as to allow for placement of corner without crossing slough.

I hereby certify that the corner was monumented on March 18, 2025



Renewal Date: June 30, 2023

I used RTK GPS in the establishment of the accessories. Bearing and distances are to the center of the aluminum caps. Basis of bearings is as per Survey Number 018-2025.

