

CERTIFIED RECORD OF LAND CORNER MONUMENTATION

HISTORY OF ORIGINAL CORNER ESTABLISHED:

Corner was originally established under GLO contract number No. 103, dated September 3, 1963, executed David P. Thompson. Surveyor General field notes state:

Set post for corner to secs. 9, 10, 15, & 16 in mound of earth with charred stake, pits, trench, as per instructions.

Survey for Road Petition 225, dated Nove 29, 1884, executed by Moses Austin, calls to this corner but does not describe monument.

T 3 S R 39 E J-13

	S	16	

DESCRIPTION OF CORNER EVIDENCE FOUND:

Found remnants of an old T-Post fence corner. A North/South running fenceline falls approx. 250 feet to the South.

SEE SURVEY NUMBER 018-2025

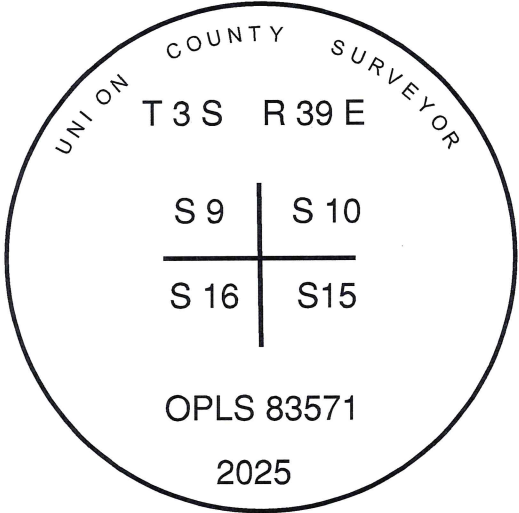
DESCRIPTION OF MONUMENT AND ACCESSORIES I ESTABLISHED TO REHABILITATE THE MONUMENT AT THE ORIGINAL LOCATION OF THIS CORNER:

At position by Survey, I set a 2 1/2" x 30" aluminum pipe, with 3" aluminum cap, marked as shown below, 36" in the ground, from which:

NEW BEARING OBJECTS:

- A 5/8" x 30" iron pin bears North 38°59' East, a distance of 64.30 feet, with 1 ½" aluminum cap marked UNION COUNTY SURVEYOR NE RP.
- A 5/8" x 30" iron pin bears South 31°37' East, a distance of 15.28 feet, with 1 ½" aluminum cap marked UNION COUNTY SURVEYOR SE RP.
- A 5/8" x 30" iron pin bears South 59°02' West, a distance of 22.16 feet, with 1 ½" aluminum cap marked UNION COUNTY SURVEYOR SW RP.
- A 5/8" x 30" iron pin bears North 19°42' West, a distance of 31.85 feet, with 1 ½" aluminum cap marked UNION COUNTY SURVEYOR NW RP.

I hereby certify that the corner was monumented on April 9, 2025



REGISTERED
PROFESSIONAL
LAND SURVEYOR

OREGON
June 2, 2010
JEFFREY S. HSU
83571

Renewal Date: June 30, 2025

I used RTK GPS in the establishment of the accessories. Bearing and distances are to the center of the aluminum caps. Basis of bearings is as per Survey Number 018-2025.

UNION COUNTY
SURVEYOR

Date Received 4/28/25

Date Filed 4/28/25

Filed By

File Number 006-2025R

HORIZONTAL CONTROL DATA

UNION COUNTY, OREGON

OREGON STATE PLANE, NORTH ZONE (3601)

STA NAME: 2025013

SECTION CORNER COMMON TO SECTIONS 9, 10, 15, AND 16

TWP. 3 S RGE. 39 E

GEODETIC COORD: NAD 83(91)

DATE TIED: April 9, 2025

LAT: 45 ° 18 ' 41.70117 " N

SURVEYOR: JEFFREY S. HSU
OPLS 83571

LONG: 117 ° 55 ' 55.84663 " W

FIRM: BAGETT, GRIFFITH, & BLACKMAN
2006 ADAMS AVENUE
LAGRANDE, OR 97850
(541) 963-6092

SP. COOR: NAD 83(91)

N: 610187.811 INT FT.

E: 8862564.515 INT FT.

TYPE: GPS

THETA: 1 ° 49 ' 15.8 "

ORDER: SECOND CLASS: 1

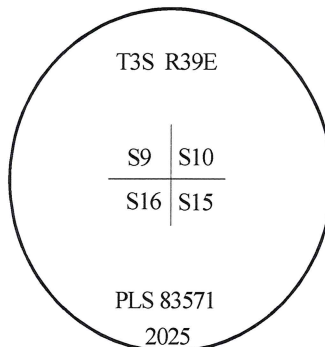
SCALE FACTOR: 0.999897683

ELEV: 2692.82 US FT.

ELEV: DATUM: NGVD 29

COMMENTS:

3" Aluminum Cap marked as shown



Renewal Date: June 30, 2025

1 METER = 3.280833333... US FEET = 39.37 INCHES

1 METER = 3.280839895 INT'L FEET OR 1 INCH = 2.54 CM

TO CALCULATE ELEVATION FACTOR (IN THE NORTH AMERICAN CONTINENT)

DIVIDE 20,906,000 BY (20,906,000 + ELLIPSOID ELEV. IN FEET)

GEOID MODEL : 2012B