

CERTIFIED RECORD OF LAND CORNER MONUMENTATION

HISTORY OF ORIGINAL CORNER ESTABLISHED:

Corner was originally established under GLO contract number No. 103, dated September 3, 1963, executed David P. Thompson. Surveyor General field notes state:

Set post for corner to secs. 8, 9, 16, & 17 on bank of slough in mound of earth with charred stake, pits, trench, as per instructions.

In Old Book 98, dated October 1st, 1888, J.W. Kimbrell find no corner and resets it. Field Notes non specific about the type of monument.

T 3 S R 39 E J-09

| | | | |
|--|---|----|--|
| | | | |
| | S | 17 | |
| | | | |
| | | | |

DESCRIPTION OF CORNER EVIDENCE FOUND:

Found an old fence corner to previously existing fence line running Westerly, in an existing North/South running fence line on edge of old slough

SEE SURVEY NUMBER 018-2025

DESCRIPTION OF MONUMENT AND ACCESSORIES I ESTABLISHED TO REHABILITATE THE MONUMENT AT THE ORIGINAL LOCATION OF THIS CORNER:

On East side of fence corner, I set a 2 1/2" x 30" aluminum pipe, with 3" aluminum cap, marked as shown below, 30" in the ground, from which:

NEW BEARING OBJECTS:

- A 5/8" x 30" iron pin bears North 42°30' East, a distance of 14.32 feet, with 1 1/2" aluminum cap marked UNION COUNTY SURVEYOR NE RP.
- A 5/8" x 30" iron pin bears South 41°47' East, a distance of 17.76 feet, with 1 1/2" aluminum cap marked UNION COUNTY SURVEYOR SE RP.
- A 5/8" x 30" iron pin bears South 45°04' West, a distance of 11.50 feet, with 1 1/2" aluminum cap marked UNION COUNTY SURVEYOR SW RP.
- A 5/8" x 30" iron pin bears North 38°20' West, a distance of 10.59 feet, with 1 1/2" aluminum cap marked UNION COUNTY SURVEYOR NW RP.

Falls in North/South bearing fence line.

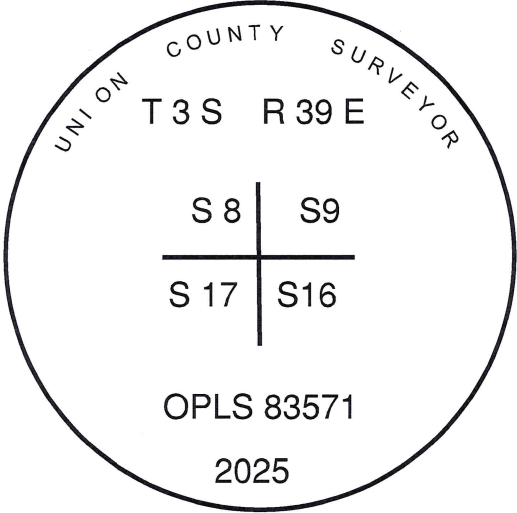
I hereby certify that the corner was monumented on April 9, 2025

REGISTERED
PROFESSIONAL
LAND SURVEYOR



OREGON
June 2, 2010
JEFFREY S. HSU
83571

Renewal Date: June 30, 2025

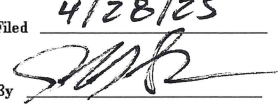


I used RTK GPS in the establishment of the accessories. Bearing and distances are to the center of the aluminum caps. Basis of bearings is as per Survey Number 018-2025.

UNION COUNTY
SURVEYOR

Date Received 4/28/25

Date Filed 4/28/25

Filed By 

File Number 004-2025R

HORIZONTAL CONTROL DATA
UNION COUNTY, OREGON
OREGON STATE PLANE, NORTH ZONE (3601)

STA NAME: 2025012

SECTION CORNER COMMON TO SECTIONS 8, 9, 16, AND 17

TWP. 3 S RGE. 39 E

GEODETIC COORD: NAD 83(91)

DATE TIED: April 9, 2025

LAT: 45 ° 18 ' 41.79668 " N

SURVEYOR: JEFFREY S. HSU
OPLS 83571

LONG: 117 ° 57 ' 10.96726 " W

FIRM: BAGETT, GRIFFITH, & BLACKMAN
2006 ADAMS AVENUE
LAGRANDE, OR 97850
(541) 963-6092

SP. COOR: NAD 83(91)

N: 610027.586 INT FT.

E: 8857198.871 INT FT.

TYPE: GPS

THETA: 1 ° 48 ' 22.5 "

ORDER: SECOND CLASS: 1

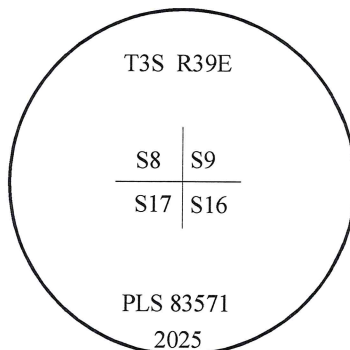
SCALE FACTOR: 0.999897684

ELEV: 2689.62 US FT.

ELEV: DATUM: NGVD 29

COMMENTS:

3" Aluminum Cap marked as shown
in fence corner



Renewal Date: June 30, 2025

1 METER = 3.280833333... US FEET = 39.37 INCHES

1 METER = 3.280839895 INT'L FEET OR 1 INCH = 2.54 CM

TO CALCULATE ELEVATION FACTOR (IN THE NORTH AMERICAN CONTINENT)

DIVIDE 20,906,000 BY (20,906,000 + ELLIPSOID ELEV. IN FEET)

GEOID MODEL : 2012B