

CERTIFIED RECORD OF LAND CORNER MONUMENTATION

HISTORY OF ORIGINAL CORNER ESTABLISHED:

Corner established by David P. Thompson under GLO Contract No. 103, dated September 3rd, 1863. Surveyor General notes state: Set post for corner to secs. 1, 2, 11, & 12 in mound of Earth with charred stake pits trench as per instructions.

T 3 S R 39 E E-21

	S	11	

Oregon State Highway Department strip map 5B-2-7 (1935) and 6B-13-20 (1944) shows a "Fence Cor." at the corner position.

DESCRIPTION OF CORNER EVIDENCE FOUND:

None. Corner falls in a cultivated field.

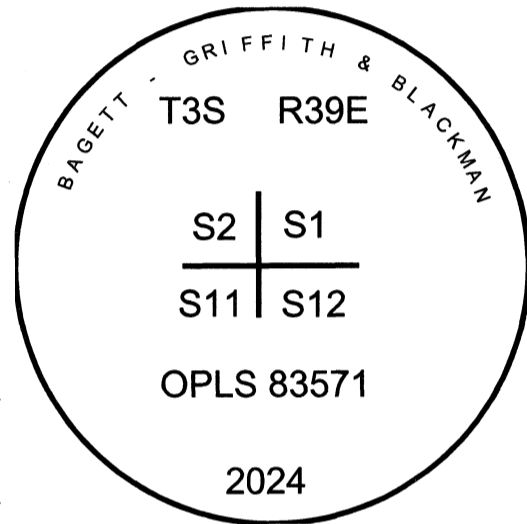
SEE SURVEY NUMBER 017-2024

DESCRIPTION OF MONUMENT AND ACCESSORIES I ESTABLISHED TO PERPETUATE THE ORIGINAL LOCATION OF THIS CORNER:

At position by Survey, I set a 5/8" x 30" iron pin, 60" in the ground, with a 2 1/2" aluminum cap marked as shown, from which:

NEW BEARING OBJECTS:

- A 5/8" x 15" iron pin bears North 40°07' East, a dist. of 9.20 feet, with 1 1/2" aluminum cap marked UNION COUNTY SURVEYOR NE RP.
- A 5/8" x 15" iron pin bears South 59°50' East, a dist. of 10.32 feet, with 1 1/2" aluminum cap marked UNION COUNTY SURVEYOR SE RP.
- A 5/8" x 15" iron pin bears South 37°31' West, a dist. of 10.15 feet, with 1 1/2" aluminum cap marked UNION COUNTY SURVEYOR SW RP.
- A 5/8" x 15" iron pin bears North 56°13' East, a dist. of 12.49 feet, with 1 1/2" aluminum cap marked UNION COUNTY SURVEYOR NW RP.

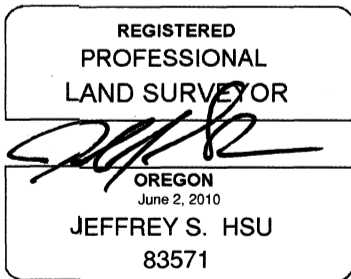


All references are buried 24" below ground

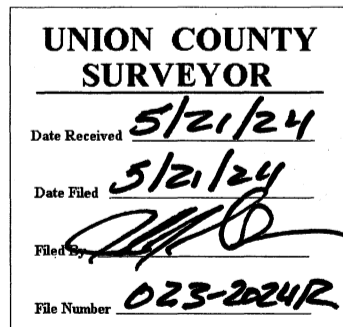
Falls in cultivated field

I hereby certify that the corner was monumented on May 13th, 2024.

Witnesses: Kyle Tucker



Renewal Date: June 30, 2025



I used a Leica GS18 with RTK in the establishment of the new accessories. Basis of Bearing is as per survey filed concurrently. Bearings and distances are to the center of the aluminum caps.

HORIZONTAL CONTROL DATA

UNION COUNTY, OREGON

OREGON STATE PLANE, NORTH ZONE (3601)

STA NAME: 2024015

SECTION CORNER COMMON TO SECTIONS 1, 2, 11, AND 12

TWP. 3 S RGE. 39 E

GEODETIC COORD: NAD 83(91)

DATE TIED: May 13, 2024

LAT: 45 ° 19 ' 33.54919 " N

SURVEYOR: JEFFREY S. HSU
OPLS 83571

LONG: 117 ° 53 ' 27.88411 " W

FIRM: BAGETT, GRIFFITH, & BLACKMAN
2006 ADAMS AVENUE
LAGRANDE, OR 97850
(541) 963-6092

SP. COOR: NAD 83(91)

N: 615774.651 INT FT.

E: 8872962.778 INT FT.

TYPE: GPS

THETA: 1 ° 51 ' 0.8 "

ORDER: SECOND CLASS: 1

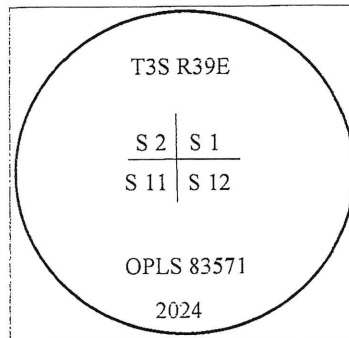
SCALE FACTOR: 0.99989834

ELEV: 2687.04 US FT.

ELEV: DATUM: NGVD 29

COMMENTS:

5/8" iron pin with 2 1/2" aluminum cap
buried in cultivated field



Renewal Date: June 30, 2025

1 METER = 3.2808333333... US FEET = 39.37 INCHES

1 METER = 3.280839895 INT'L FEET OR 1 INCH = 2.54 CM

TO CALCULATE ELEVATION FACTOR (IN THE NORTH AMERICAN CONTINENT)

DIVIDE 20,906,000 BY (20,906,000 + ELLIPSOID ELEV. IN FEET)

GEOID MODEL : 2012B

