

CERTIFIED RECORD OF LAND CORNER MONUMENTATION

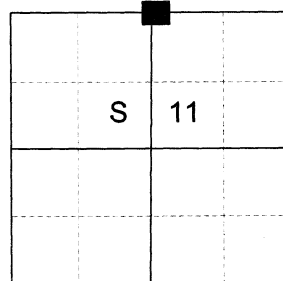
HISTORY OF ORIGINAL CORNER ESTABLISHED:

Corner established by David P. Thompson under GLO Contract No. 103, dated September 3rd, 1863. Surveyor General notes state: Set post for 1/4 sec. corner in mound of Earth with charred stake pits trench as per instructions.

Road Petition #288 of Union County Road Petition records shows the intended road to be North along the middle of Section 2 and the North half of Section 11

Oregon State Highway Department strip map 5B-2-7 (1935) and 6B-13-20 (1944) shows a "Fence Cor." at the corner position.

T 3 S R 39 E E-19



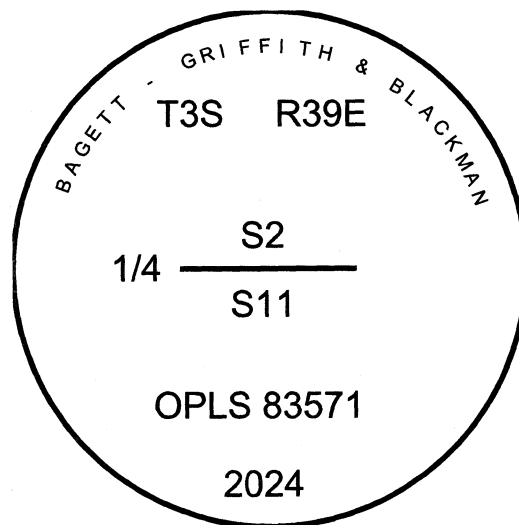
DESCRIPTION OF CORNER EVIDENCE FOUND:

Position falls in center of Red Pepper Road. I find no other evidence at the position computed by ODOT strip map.

SEE SURVEY NUMBER 017-2024

DESCRIPTION OF MONUMENT AND ACCESSORIES I ESTABLISHED TO PERPETUATE THE ORIGINAL LOCATION OF THIS CORNER:

Holding the Easting of the Centerline of Red Pepper Road and the Northing of the fence corner as per ODOT strip map, I set a 5/8" x 30" iron pin, 33" in the gravel road surface, with a 2 1/2" aluminum cap marked as shown, from which:



NEW BEARING OBJECTS:

- A 5/8" x 15" iron pin bears North 37°20' East, a dist. of 32.51 feet, with 1 1/2" aluminum cap marked UNION COUNTY SURVEYOR NE RP.
- A 5/8" x 15" iron pin bears South 76°12' East, a dist. of 28.34 feet, with 1 1/2" aluminum cap marked UNION COUNTY SURVEYOR SE RP (approx. 3 ft. Northwest of a power pole).
- A 5/8" x 15" iron pin bears South 25°48' West, a dist. of 24.25 feet, with 1 1/2" aluminum cap marked UNION COUNTY SURVEYOR SW RP (approx. 3 ft. Northeast of a power pole).
- A 5/8" x 15" iron pin bears North 66°50' East, a dist. of 29.76 feet, with 1 1/2" aluminum cap marked UNION COUNTY SURVEYOR NW RP.

All references are buried 24" below ground

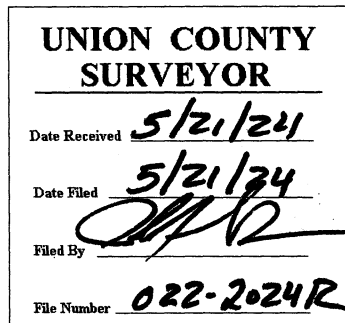
Falls in center of Red Pepper Road.

I hereby certify that the corner was monumented on May 13th, 2024.

Witnesses: Kyle Tucker



Renewal Date: June 30, 2025



I used a Leica GS18 with RTK in the establishment of the new accessories. Basis of Bearing is as per Survey Number 017-2024. Bearings and distances are to the center of the aluminum caps.

HORIZONTAL CONTROL DATA

UNION COUNTY, OREGON

OREGON STATE PLANE, NORTH ZONE (3601)

STA NAME: 2024011

QUARTER CORNER COMMON TO SECTIONS 2 AND 11

TWP. 3 S RGE. 39 E

GEODETIC COORD: NAD 83(91)

DATE TIED: May 14, 2024

LAT: 45 ° 19 ' 33.88557 " N

SURVEYOR: JEFFREY S. HSU
OPLS 83571

LONG: 117 ° 54 ' 5.06963 " W

FIRM: BAGETT, GRIFFITH, & BLACKMAN
2006 ADAMS AVENUE
LAGRANDE, OR 97850
(541) 963-6092

SP. COOR: NAD 83(91)

N: 615723.098 INT FT.

E: 8870306.501 INT FT.

TYPE: GPS

THETA: 1 ° 50 ' 34.4 "

ORDER: SECOND CLASS: 1

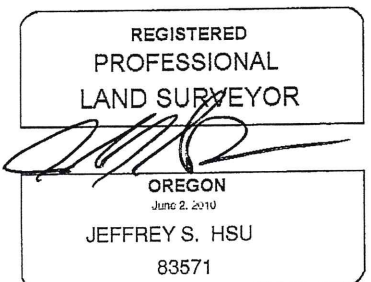
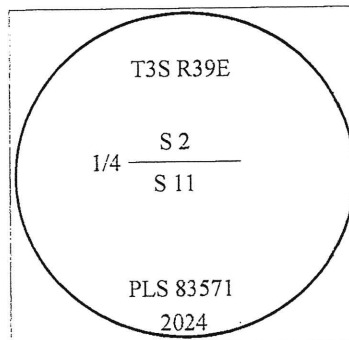
SCALE FACTOR: 0.999898344

ELEV: 2708.51 US FT.

ELEV: DATUM: NGVD 29

COMMENTS:

5/8" iron pin with 2 1/2" aluminum cap
in center line of Red Pepper Road



Renewal Date: June 30, 2025

1 METER = 3.2808333333... US FEET = 39.37 INCHES

1 METER = 3.280839895 INT'L FEET OR 1 INCH = 2.54 CM

TO CALCULATE ELEVATION FACTOR (IN THE NORTH AMERICAN CONTINENT)

DIVIDE 20,906,000 BY (20,906,000 + ELLIPSOID ELEV. IN FEET)

GEOID MODEL : 2012B

