

CERTIFIED RECORD OF LAND CORNER MONUMENTATION

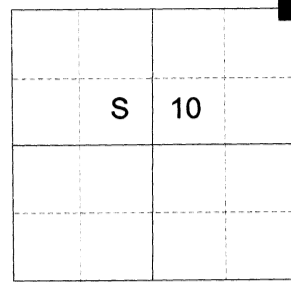
HISTORY OF ORIGINAL CORNER ESTABLISHED:

Corner established by David P. Thompson under GLO Contract No. 103, dated September 3rd, 1863. Surveyor General notes state: Set post for corner to secs. 2, 3, 10, & 11 in mound of Earth with charred stake pits trench as per instructions.

Corner found in Old Book Survey 98 dated Oct. 1st, 1888 by J.W. Kimbrell, County Surveyor. No description given.

Oregon State Highway Department strip map 5B-2-7 (1935) and 6B-13-20 (1944) shows a "Fence Cor." at the corner position.

T 3 S R 39 E E-17



DESCRIPTION OF CORNER EVIDENCE FOUND:

None. Position falls in a cultivated field.

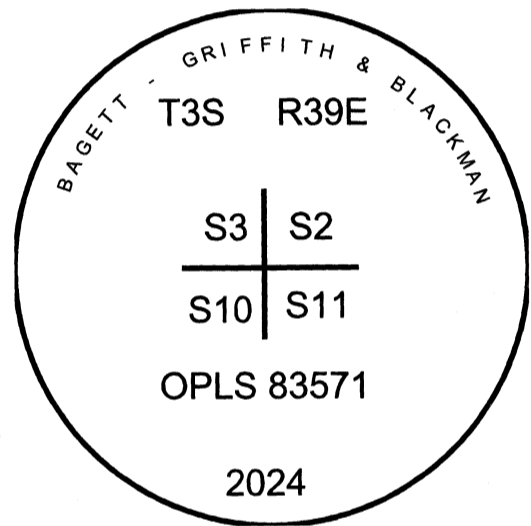
SEE SURVEY NUMBER 017-2024

DESCRIPTION OF MONUMENT AND ACCESSORIES I ESTABLISHED TO PERPETUATE THE ORIGINAL LOCATION OF THIS CORNER:

At record angle and distance as per ODOT survey, I set a 5/8" x 30" iron pin, 60" in the ground, with a 2 1/2" aluminum cap marked as shown, from which:

NEW BEARING OBJECTS:

- A 5/8" x 15" iron pin bears North 44°44' East, a dist. of 20.14 feet, with 1 1/2" aluminum cap marked UNION COUNTY SURVEYOR NE RP.
- A 5/8" x 15" iron pin bears South 45°55' East, a dist. of 17.55 feet, with 1 1/2" aluminum cap marked UNION COUNTY SURVEYOR SE RP.
- A 5/8" x 15" iron pin bears South 37°32' West, a dist. of 17.14 feet, with 1 1/2" aluminum cap marked UNION COUNTY SURVEYOR SW RP.
- A 5/8" x 15" iron pin bears North 43°42' East, a dist. of 15.19 feet, with 1 1/2" aluminum cap marked UNION COUNTY SURVEYOR NW RP.



All references are buried 24" below ground

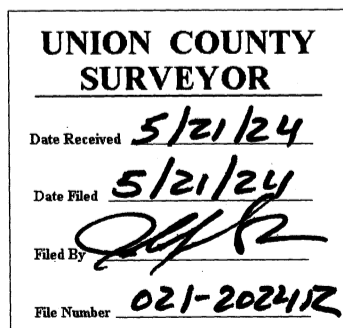
Falls in cultivated field and approx. 10 ft. West of North/South field edge but in center of North/South running rise.

I hereby certify that the corner was monumented on May 14th, 2024.

Witnesses: Kyle Tucker and Adam Gordon



Renewal Date: June 30, 2025



I used a Leica GS18 with RTK in the establishment of the new accessories. Basis of Bearing is as per survey filed concurrently. Bearings and distances are to the center of the aluminum caps or to the X of the bolt.

HORIZONTAL CONTROL DATA

UNION COUNTY, OREGON

OREGON STATE PLANE, NORTH ZONE (3601)

STA NAME: 2024019

SECTION CORNER COMMON TO SECTIONS 2, 3, 10, AND 11

TWP. 3 S RGE. 39 E

GEODETIC COORD: NAD 83(91)

DATE TIED: May 14, 2024

LAT: 45 ° 19 ' 33.87586 " N

SURVEYOR: JEFFREY S. HSU
OPLS 83571

LONG: 117 ° 54 ' 42.35036 " W

FIRM: BAGETT, GRIFFITH, & BLACKMAN
2006 ADAMS AVENUE
LAGRANDE, OR 97850
(541) 963-6092

SP. COOR: NAD 83(91)

N: 615636.635 INT FT.

E: 8867644.546 INT FT.

TYPE: GPS

THETA: 1 ° 50 ' 8 "

ORDER: SECOND CLASS: 1

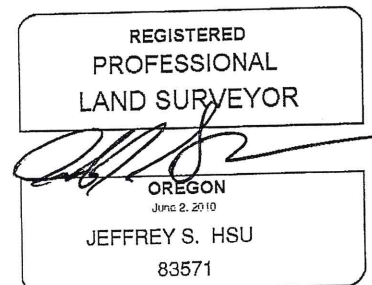
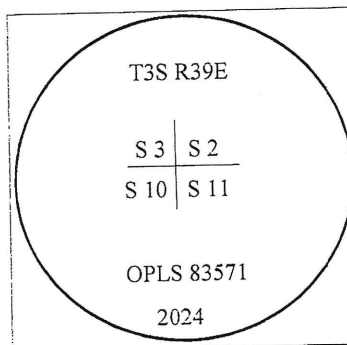
SCALE FACTOR: 0.999898344

ELEV: 2687.56 US FT.

ELEV: DATUM: NGVD 29

COMMENTS:

5/8" iron pin with 2 1/2" aluminum cap
buried in cultivated field



Renewal Date: June 30, 2025

1 METER = 3.2808333333... US FEET = 39.37 INCHES

1 METER = 3.280839895 INT'L FEET OR 1 INCH = 2.54 CM

TO CALCULATE ELEVATION FACTOR (IN THE NORTH AMERICAN CONTINENT)

DIVIDE 20,906,000 BY (20,906,000 + ELLIPSOID ELEV. IN FEET)

GEOID MODEL : 2012B

