

CERTIFIED RECORD OF LAND CORNER MONUMENTATION

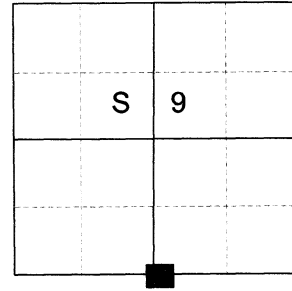
HISTORY OF ORIGINAL CORNER ESTABLISHED:

Corner established by David P. Thompson under GLO Contract No. 103, dated September 3rd, 1863. Surveyor General notes state: Set post for 1/4 Sec. corner in mound of Earth with charred stake pits trench as per instructions.

Corner reestablished in Old Book Survey 98 dated Oct. 1st, 1888 by J.W. Kimbrell, County Surveyor. Survey states: post decayed, deposited point of old stake and drove new stake 3 inches in diameter and 30 inches long in old mound along side of point of old stake. The corner being in a meadow I drove the stake down level with top of ground.

Oregon State Highway Department strip map 5B-2-7 (1935) and 6B-13-20 (1944) shows a "Fence Cor." at the corner position.

T 3 S R 39 E E-11



DESCRIPTION OF CORNER EVIDENCE FOUND:

None. Falls in a cultivated field

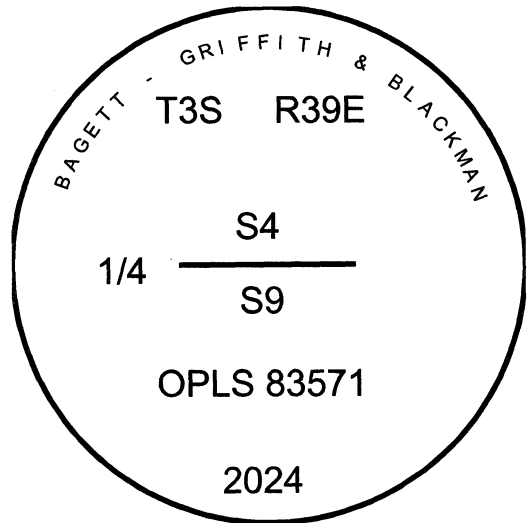
SEE SURVEY NUMBER 017-2024

DESCRIPTION OF MONUMENT AND ACCESSORIES I ESTABLISHED TO PERPETUATE THE ORIGINAL LOCATION OF THIS CORNER:

At record angle and distance as per ODOT survey, I set a 5/8" x 30" iron pin, 60" in the ground, with a 2 1/2" aluminum cap marked as shown, from which:

NEW BEARING OBJECTS:

- A 5/8" x 15" iron pin bears North 44°42' East, a dist. of 23.82 feet, with 1 1/2" aluminum cap marked UNION COUNTY SURVEYOR NE RP.
- A 5/8" x 15" iron pin bears South 38°36' East, a dist. of 27.49 feet, with 1 1/2" aluminum cap marked UNION COUNTY SURVEYOR SE RP.
- A 5/8" x 15" iron pin bears South 44°46' West, a dist. of 30.38 feet, with 1 1/2" aluminum cap marked UNION COUNTY SURVEYOR SW RP.
- A 5/8" x 15" iron pin bears North 34°36' East, a dist. of 21.70 feet, with 1 1/2" aluminum cap marked UNION COUNTY SURVEYOR NW RP.



All references are buried 24" below ground

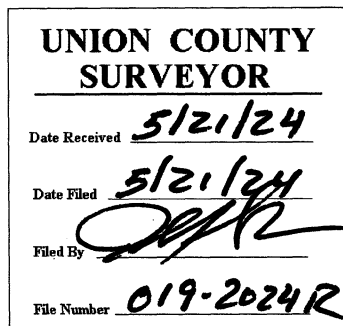
Falls in cultivated field

I hereby certify that the corner was monumented on May 14th, 2024.

Witnesses: Kyle Tucker and Adam Gordon



Renewal Date: June 30, 2025



I used a Leica GS18 with RTK in the establishment of the new accessories. Basis of Bearing is as per Survey Number 017-2024. Bearings and distances are to the center of the aluminum caps.

HORIZONTAL CONTROL DATA

UNION COUNTY, OREGON

OREGON STATE PLANE, NORTH ZONE (3601)

STA NAME: 2024018

QUARTER CORNER COMMON TO SECTIONS 4 AND 9

TWP. 3 S RGE. 39 E

GEODETIC COORD: NAD 83(91)

DATE TIED: May 14, 2024

LAT: 45 ° 19 ' 33.77479 " N

SURVEYOR: JEFFREY S. HSU
OPLS 83571

LONG: 117 ° 56 ' 33.73036 " W

FIRM: BAGETT, GRIFFITH, & BLACKMAN
2006 ADAMS AVENUE
LAGRANDE, OR 97850
(541) 963-6092

SP. COOR: NAD 83(91)

N: 615373.057 INT FT.

E: 8859691.848 INT FT.

TYPE: GPS

THETA: 1 ° 48 ' 49 "

ORDER: SECOND CLASS: 1

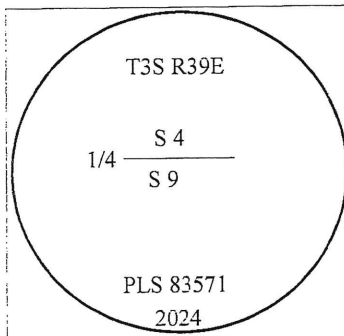
SCALE FACTOR: 0.999898343

ELEV: 2691.99 US FT.

ELEV: DATUM: NGVD 29

COMMENTS:

5/8" iron pin with 2 1/2" aluminum cap
buried in cultivated field



REGISTERED
PROFESSIONAL
LAND SURVEYOR

OREGON
June 2, 2010
JEFFREY S. HSU
83571

Renewal Date: June 30, 2025

1 METER = 3.2808333333... US FEET = 39.37 INCHES

1 METER = 3.280839895 INT'L FEET OR 1 INCH = 2.54 CM

TO CALCULATE ELEVATION FACTOR (IN THE NORTH AMERICAN CONTINENT)

DIVIDE 20,906,000 BY (20,906,000 + ELLIPSOID ELEV. IN FEET)

GEOID MODEL : 2012B

