

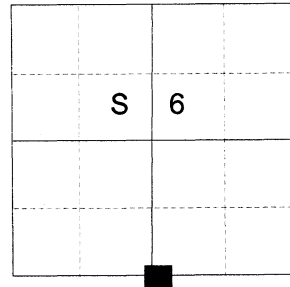
CERTIFIED RECORD OF LAND CORNER MONUMENTATION

HISTORY OF ORIGINAL CORNER ESTABLISHED:

Corner established by David P. Thompson under GLO Contract No. 103, dated September 3rd, 1863. Surveyor General notes state: Set post for 1/4 Sec. corner in mound of Earth with charred stake pits trench as per instructions.

Oregon State Highway Department strip map 5B-2-7 (1935) and 6B-13-20 (1944) shows a "Rock" at the corner position.

T 3 S R 39 E E-03



DESCRIPTION OF CORNER EVIDENCE FOUND:

At computed position as per ODOT strip map, I find an ancient wood fence post with fences bearing South and West with cut wire to a previous Westerly fence. Upon excavation at the base of the post, I find an 8"x6"x14" stone, 18" below ground, with "1/4 X" chiseled on top and 5 lines chiseled on bottom.

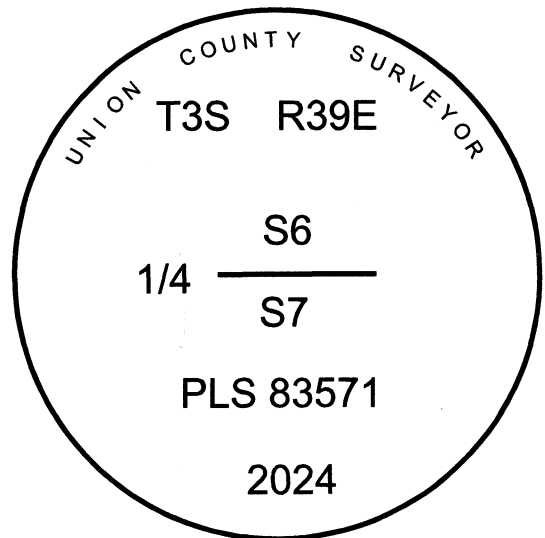
SEE SURVEY NUMBER 017-2024

DESCRIPTION OF MONUMENT AND ACCESSORIES I ESTABLISHED TO PERPETUATE THE ORIGINAL LOCATION OF THIS CORNER:

At position of found stone, I set a 2 1/2" x 30" aluminum pipe, 28" in the ground, with a 3" aluminum cap marked as shown, from which:

NEW BEARING OBJECTS:

- A 5/8" x 15" iron pin bears North 13°18' East, a dist. of 13.64 feet, with 1 1/2" aluminum cap marked UNION COUNTY SURVEYOR NE RP.
- A 5/8" x 15" iron pin bears South 64°08' East, a dist. of 15.84 feet, with 1 1/2" aluminum cap marked UNION COUNTY SURVEYOR SE RP.
- A 5/8" x 15" iron pin bears South 19°45' West, a dist. of 15.41 feet, with 1 1/2" aluminum cap marked UNION COUNTY SURVEYOR SW RP.
- A 5/8" x 15" iron pin bears North 53°23' East, a dist. of 21.09 feet, with 1 1/2" aluminum cap marked UNION COUNTY SURVEYOR NW RP.



Set steel fence post 0.3 feet South of monument.

Falls in North/South running fence lines.

I hereby certify that the corner was monumented on May 14th, 2024.

Witnesses: Kyle Tucker and Adam Gordon

REGISTERED
PROFESSIONAL
LAND SURVEYOR

[Signature]
OREGON
June 2, 2010
JEFFREY S. HSU
83571

Renewal Date: June 30, 2025

I used a Leica GS18 with RTK in the establishment of the new accessories. Basis of Bearing is as per Survey Number 017-2024. Bearings and distances are to the center of the aluminum caps.

UNION COUNTY
SURVEYOR
Date Received 5/21/24
Date Filed 5/21/24
Filed By *[Signature]*
File Number 018-2024R

HORIZONTAL CONTROL DATA

UNION COUNTY, OREGON

OREGON STATE PLANE, NORTH ZONE (3601)

STA NAME: 2024016

QUARTER CORNER COMMON TO SECTIONS 6 AND 7

TWP. 3 S RGE. 39 E

GEODETIC COORD: NAD 83(91)

DATE TIED: May 14, 2024

LAT: 45 ° 19 ' 33.42267 " N

SURVEYOR: JEFFREY S. HSU
OPLS 83571

LONG: 117 ° 59 ' 2.22818 " W

FIRM: BAGETT, GRIFFITH, & BLACKMAN
2006 ADAMS AVENUE
LAGRANDE, OR 97850
(541) 963-6092

SP. COOR: NAD 83(91)

N: 615004.373 INT FT.

E: 8849089.406 INT FT.

TYPE: GPS

THETA: 1 ° 47 ' 3.6 "

ORDER: SECOND CLASS: 1

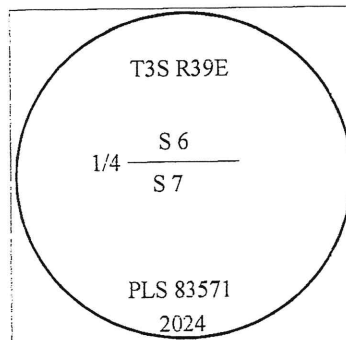
SCALE FACTOR: 0.999898338

ELEV: 2700.57 US FT.

ELEV: DATUM: NGVD 29

COMMENTS:

2 1/2" aluminum pipe with 3" aluminum cap
in North/South fence line



REGISTERED
PROFESSIONAL
LAND SURVEYOR

OREGON
June 2, 2010
JEFFREY S. HSU
83571

Renewal Date: June 30, 2025

1 METER = 3.2808333333... US FEET = 39.37 INCHES

1 METER = 3.280839895 INT'L FEET OR 1 INCH = 2.54 CM

TO CALCULATE ELEVATION FACTOR (IN THE NORTH AMERICAN CONTINENT)

DIVIDE 20,906,000 BY (20,906,000 + ELLIPSOID ELEV. IN FEET)

GEOID MODEL : 2012B

