

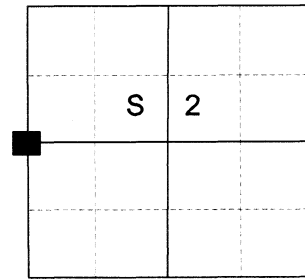
CERTIFIED RECORD OF LAND CORNER MONUMENTATION

HISTORY OF ORIGINAL CORNER ESTABLISHED:

Corner established by Timothy W. Davenport under GLO Contract No. 102, dated July 20th, 1863. Surveyor General notes state: Set post for 1/4 sec. corner in mound of Earth with charred stake, pits, trench, as per instructions.

Corner shown on ODOT strip map 6B-13-20 at station 370+08.3

T 3 S R 39 E C-17



DESCRIPTION OF CORNER EVIDENCE FOUND:

None. Position falls in centerline of Highway 237.

SEE SURVEY NUMBER 017-2024

DESCRIPTION OF MONUMENT AND ACCESSORIES I

ESTABLISHED TO PERPETUATE THE ORIGINAL LOCATION OF THIS CORNER:

As corner falls in a well trafficked highway, I set a 2 1/2" x 30" aluminum pipe as a reference monument, North 0°02'14" East, a dist. of 40.00 ft. from Station 370+08.3, 30" in the ground, with a 3" aluminum cap marked as shown, from which:

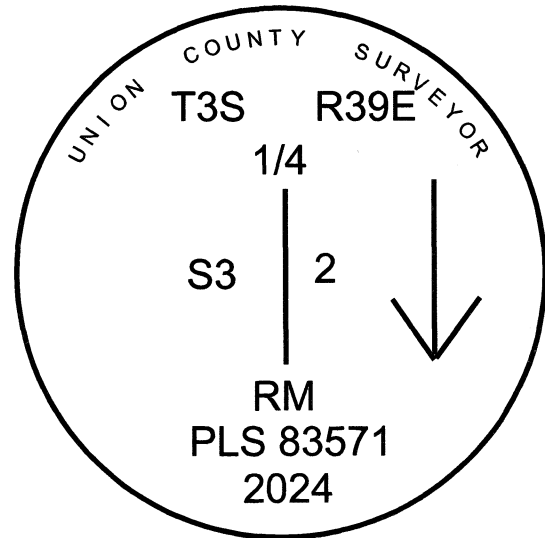
NEW BEARING OBJECTS:

A 5/8" x 30" iron pin bears North 68°59' East, a dist. of 60.87 feet, with 1 1/2" aluminum cap marked UNION COUNTY SURVEYOR NE RP from true corner position (bears South 72°15' East, a dist. of 59.63 feet from the monument).

A 5/8" x 30" iron pin bears South 55°37' East, a dist. of 44.17 feet, with 1 1/2" aluminum cap marked UNION COUNTY SURVEYOR SE RP from true corner position (bears South 29°17' East, a dist. of 74.46 feet from reference monument).

A 5/8" x 30" iron pin bears South 69°04' West, a dist. of 66.82 feet, with 1 1/2" aluminum cap marked UNION COUNTY SURVEYOR SW RP from true corner position (bears South 44°21' West, a dist. of 89.32 feet from reference monument).

A 5/8" x 30" iron pin bears North 55°38' West, a dist. of 47.27 feet, with 1 1/2" aluminum cap marked UNION COUNTY SURVEYOR NW RP from true corner position (bears South 71°10' West, a dist. of 41.25 feet from reference monument).



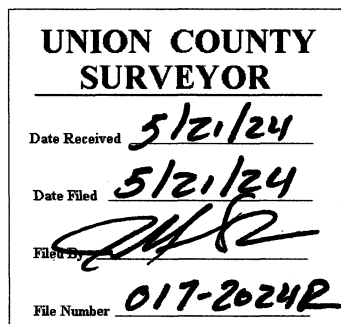
Reference monument falls on North side of East/West running Highway and approx. 2 ft. North of power pole guy wire anchor

I hereby certify that the corner was monumented on May 1st, 2024.

Witnesses: Kyle Tucker



Renewal Date: June 30, 2025



I used a Leica GS18 with RTK in the establishment of the new accessories. Basis of Bearing is as per Survey Number 017-2024. Bearings and distances are to the center of the aluminum caps.

HORIZONTAL CONTROL DATA

UNION COUNTY, OREGON

OREGON STATE PLANE, NORTH ZONE (3601)

STA NAME: 2024003

REFERENCE TO QUARTER CORNER COMMON TO SECTIONS 2 AND 3

TWP. 3 S RGE. 39 E

GEODETIC COORD: NAD 83(91)

DATE TIED: May 1, 2024

LAT: 45 ° 20 ' 0.23299 " N

SURVEYOR: JEFFREY S. HSU
OPLS 83571

LONG: 117 ° 54 ' 42.46867 " W

FIRM: BAGETT, GRIFFITH, & BLACKMAN
2006 ADAMS AVENUE
LAGRANDE, OR 97850
(541) 963-6092

SP. COOR: NAD 83(91)

N: 618304.311 INT FT.

E: 8867550.599 INT FT.

TYPE: GPS

THETA: 1 ° 50 ' 7.9 "

ORDER: SECOND CLASS: 1

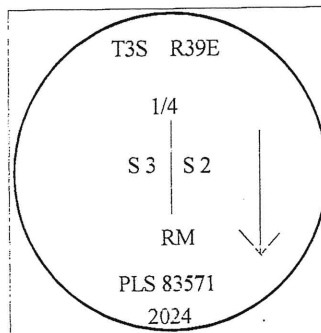
SCALE FACTOR: 0.999898703

ELEV: 2692.36 US FT.

ELEV: DATUM: NGVD 29

COMMENTS:

2 1/2" aluminum pipe with 3" aluminum cap
reference monument on North side of highway.



REGISTERED
PROFESSIONAL
LAND SURVEYOR

OREGON
June 2, 2010
JEFFREY S. HSU
83571

Renewal Date: June 30, 2025

1 METER = 3.2808333333... US FEET = 39.37 INCHES

1 METER = 3.280839895 INT'L FEET OR 1 INCH = 2.54 CM

TO CALCULATE ELEVATION FACTOR (IN THE NORTH AMERICAN CONTINENT)

DIVIDE 20,906,000 BY (20,906,000 + ELLIPSOID ELEV. IN FEET)

GEOID MODEL : 2012B

