

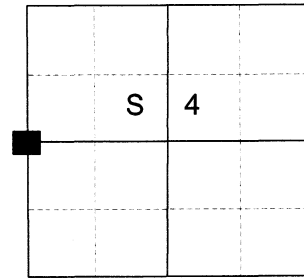
CERTIFIED RECORD OF LAND CORNER MONUMENTATION

HISTORY OF ORIGINAL CORNER ESTABLISHED:

Corner established by Timothy W. Davenport under GLO Contract No. 102, dated July 20th, 1863. Surveyor General notes state: Set post for 1/4 sec. corner in mound of Earth with charred stake, pits, trench, as per instructions.

Corner shown on ODOT strip map 6B-13-20 at station 264+02

T 3 S R 39 E C-09



DESCRIPTION OF CORNER EVIDENCE FOUND:

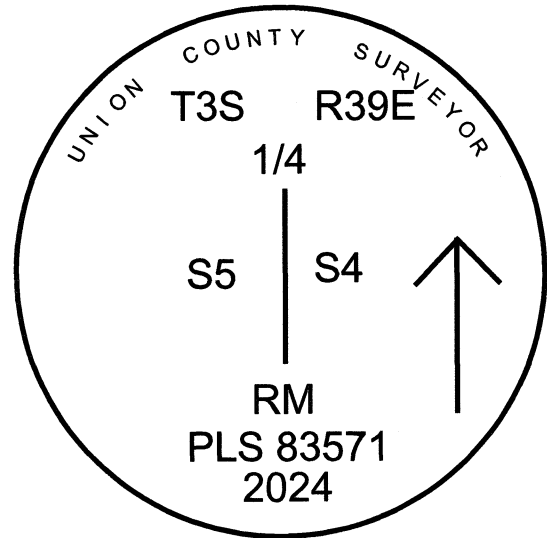
None. Corner falls in center of Cove-La Grande Highway.

SEE SURVEY NUMBER 017-2024

DESCRIPTION OF MONUMENT AND ACCESSORIES I

ESTABLISHED TO PERPETUATE THE ORIGINAL LOCATION OF THIS CORNER:

As Station 264+02 falls within a heavily trafficked highway, I set a 2 1/2" x 30" aluminum pipe as a reference monument, South 4°57'42" West, a dist. of 23.12 ft. from true position, 29" in the ground, with a 3" aluminum cap marked as shown, from which:



NEW BEARING OBJECTS:

A 5/8" x 30" iron pin bears North 45°25' East, a dist. of 38.53 feet, with 1 1/2" aluminum cap marked UNION COUNTY SURVEYOR NE RP from true corner position (bears North 30°27' East, a dist. of 58.10 feet from the reference monument).

A 5/8" x 30" iron pin bears South 47°37' East, a dist. of 34.01 feet, with 1 1/2" aluminum cap marked UNION COUNTY SURVEYOR SE RP from true corner position (bears South 89°47' East, a dist. of 27.12 feet from the reference monument).

A 5/8" x 30" iron pin bears South 49°42' West, a dist. of 34.96 feet, with 1 1/2" aluminum cap marked UNION COUNTY SURVEYOR SW RP from the true corner position (bears North 89°01' West, a dist. of 24.67 feet from the reference monument).

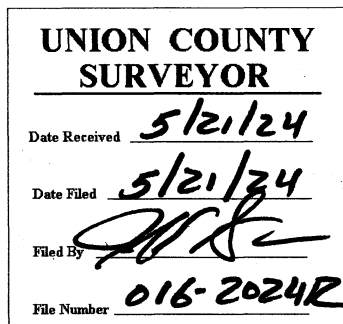
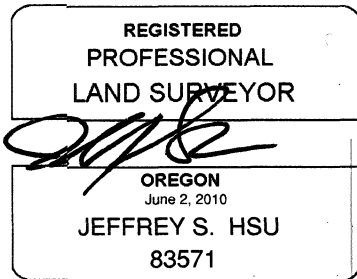
A 5/8" x 30" iron pin bears North 51°35' West, a dist. of 41.90 feet, with 1 1/2" aluminum cap marked UNION COUNTY SURVEYOR NW RP from the true corner position (bears North 32°08' West, a dist. of 57.95 feet from the reference monument).

Reference monument falls on South side of East/West running Highway

Set steel fence post approx. 1 ft. South

I hereby certify that the corner was monumented on May 1st, 2024.

Witnesses: Kyle Tucker



I used a Leica GS18 with RTK in the establishment of the new accessories. Basis of Bearing is as per Survey Number 017-2024. Bearings and distances are to the center of the aluminum caps.

HORIZONTAL CONTROL DATA

UNION COUNTY, OREGON

OREGON STATE PLANE, NORTH ZONE (3601)

STA NAME: 2024002

REFERENCE TO QUARTER CORNER COMMON TO SECTIONS 4 AND 5

TWP. 3 S RGE. 39 E

GEODETIC COORD: NAD 83(91)

DATE TIED: May 1, 2024

LAT: 45 ° 19 ' 59.79804 " N

SURVEYOR: JEFFREY S. HSU
OPLS 83571

LONG: 117 ° 57 ' 10.94282 " W

FIRM: BAGETT, GRIFFITH, & BLACKMAN
2006 ADAMS AVENUE
LAGRANDE, OR 97850
(541) 963-6092

SP. COOR: NAD 83(91)

N: 617923.284 INT FT.

E: 8856951.621 INT FT.

TYPE: GPS

THETA: 1 ° 48 ' 22.6 "

ORDER: SECOND CLASS: 1

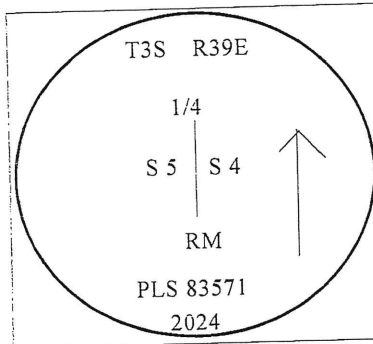
SCALE FACTOR: 0.999898696

ELEV: 2696.08 US FT.

ELEV: DATUM: NGVD 29

COMMENTS:

2 1/2" aluminum pipe with 3" aluminum cap
reference monument on South side of highway.



REGISTERED
PROFESSIONAL
LAND SURVEYOR

Jeffrey S. Hsu

OREGON
June 2, 2010
JEFFREY S. HSU
83571

Renewal Date: June 30, 2025

1 METER = 3.280833333... US FEET = 39.37 INCHES

1 METER = 3.280839895 INT'L FEET OR 1 INCH = 2.54 CM

TO CALCULATE ELEVATION FACTOR (IN THE NORTH AMERICAN CONTINENT)

DIVIDE 20,906,000 BY (20,906,000 + ELLIPSOID ELEV. IN FEET)

GEOID MODEL : 2012B

