

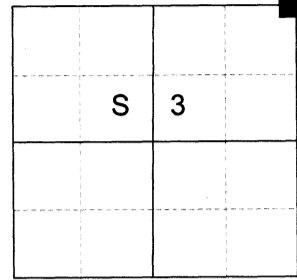
CERTIFIED RECORD OF LAND CORNER MONUMENTATION

HISTORY OF ORIGINAL CORNER ESTABLISHED:

Corner established by Timothy W. Davenport under GLO Contract No. 102, dated July 20th, 1863. Surveyor General notes state: Set post corner to secs 3, 3, 34, & 35, made mound of Earth and drove charred stake as per inst.

Oregon State Highway Department strip map 5B-2-7 (1935) and 6B-13-20 (1944) shows a "Fence Cor." at the corner position.

T 3 S R 39 E A-17



DESCRIPTION OF CORNER EVIDENCE FOUND:

I find no remains of a monument at the ODOT position. Found a line of ancient fence posts below grade running South and in line with quarter corner common to Sections 2 and 3.

SEE SURVEY NUMBER 017-2024

DESCRIPTION OF MONUMENT AND ACCESSORIES I ESTABLISHED TO MONUMENT THE ORIGINAL LOCATION OF THIS CORNER:

On line with found fence posts and distance as per ODOT survey, I set a 2 1/2" x 30" aluminum pipe, 30" in the ground, with a 3" aluminum cap marked as shown, from which:

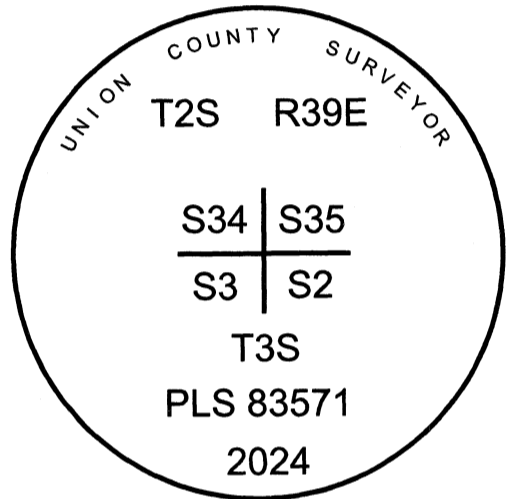
NEW BEARING OBJECTS:

A 5/8" x 15" iron pin bears North 17°46' East, a dist. of 12.96 feet, with 1 1/2" aluminum cap marked UNION COUNTY SURVEYOR NE RP.

A 5/8" x 15" iron pin bears South 61°01' East, a dist. of 14.93 feet, with 1 1/2" aluminum cap marked UNION COUNTY SURVEYOR SE RP.

A 5/8" x 15" iron pin bears South 23°32' West, a dist. of 74.51 feet, with 1 1/2" aluminum cap marked UNION COUNTY SURVEYOR SW RP.

A 5/8" x 15" iron pin bears North 63°59' West, a dist. of 14.00 feet, with 1 1/2" aluminum cap marked UNION COUNTY SURVEYOR NW RP.



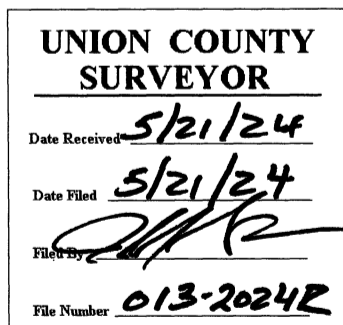
Falls on East edge of North/South running farm road. References are all approx. 18" below ground in cultivated fields, excepting the Southwest reference.

I hereby certify that the corner was monumented on May 13th, 2024.

Witnesses: Kyle Tucker



Renewal Date: June 30, 2025



I used a Leica GS18 with RTK in the establishment of the new monument. Basis of Bearing is as per Survey Number 017-2024. Bearings and distances are to the center of the aluminum caps.

HORIZONTAL CONTROL DATA

UNION COUNTY, OREGON

OREGON STATE PLANE, NORTH ZONE (3601)

STA NAME: 2024013

SECTION CORNER COMMON TO SECTIONS 2, 3, 34, AND 35

TWP. 2/3 S RGE. 39 E

GEODETIC COORD: NAD 83(91)

DATE TIED: May 13, 2024

LAT: 45 ° 20 ' 25.80095 " N

SURVEYOR: JEFFREY S. HSU
OPLS 83571

LONG: 117 ° 54 ' 42.40761 " W

FIRM: BAGETT, GRIFFITH, & BLACKMAN
2006 ADAMS AVENUE
LAGRANDE, OR 97850
(541) 963-6092

SP. COOR: NAD 83(91)

N: 620892.519 INT FT.

E: 8867472.019 INT FT.

TYPE: GPS

THETA: 1 ° 50 ' 7.9 "

ORDER: SECOND CLASS: 1

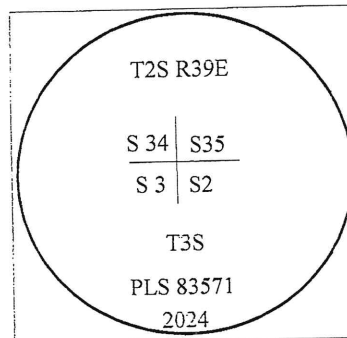
SCALE FACTOR: 0.999899066

ELEV: 2697.50 US FT.

ELEV: DATUM: NGVD 29

COMMENTS:

2 1/2" aluminum pipe with 3" aluminum cap
on East edge of farm road



Renewal Date: June 30, 2025

1 METER = 3.2808333333... US FEET = 39.37 INCHES

1 METER = 3.280839895 INT'L FEET OR 1 INCH = 2.54 CM

TO CALCULATE ELEVATION FACTOR (IN THE NORTH AMERICAN CONTINENT)

DIVIDE 20,906,000 BY (20,906,000 + ELLIPSOID ELEV. IN FEET)

GEOID MODEL : 2012B

